

Healthy Homes

through the life course

Issues specific to particular times in the life course

All ages

- Indoor air quality
- Environmental tobacco smoke
- Poisoning (e.g. carbon monoxide, lead)
- Fire safety
- Fuel poverty/cold and damp homes
- Pest control
- Food safety
- Garden accidents
- Occupancy levels
- Supports a feeling of safety, security and mental wellbeing

Pregnancy

- Avoiding toxins

Early years

- Avoiding toxins
- Accidental ingestion: (household poisons and button batteries/magnets)
- Falls
- Blind cords
- Burns and scalds
- Drowning
- Safe sleeping

Older children

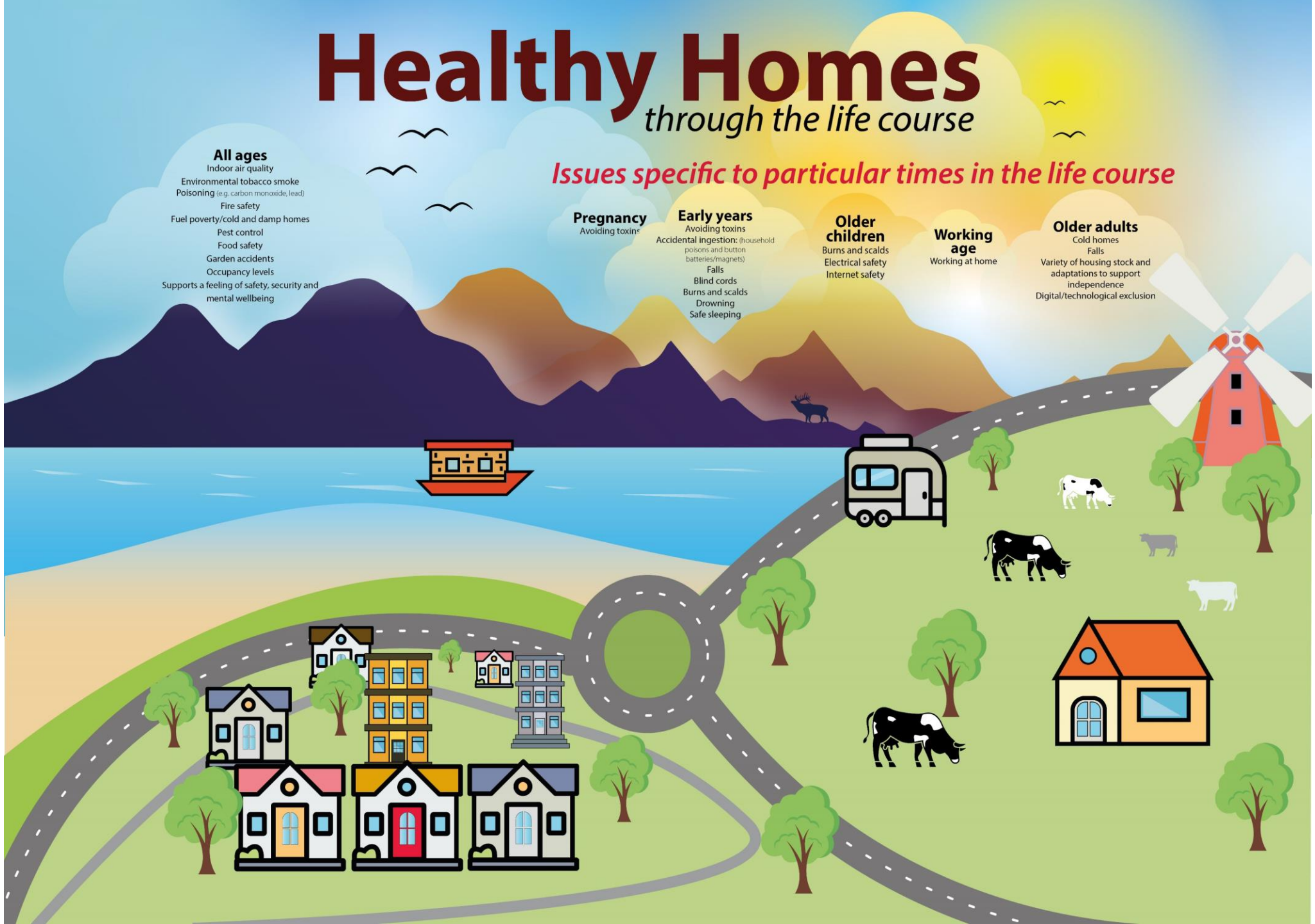
- Burns and scalds
- Electrical safety
- Internet safety

Working age

- Working at home

Older adults

- Cold homes
- Falls
- Variety of housing stock and adaptations to support independence
- Digital/technological exclusion





Homes and Health webinar series

- [Homes, Health and Inequalities](#). 13th January 13:00-15:00
- [Planning healthy homes and communities](#). 20th January 10:00-12:00
- [Healthy working at home](#). 25th January 10:00-12:00
- [Health protection in our home](#). 27th January 10:00-12:00
- [Ageing well in our home](#). 8th February 10:00-12:00
- [Healthy homes in all our strategy and policy](#). 10th February 14:00-16:00

-
- I know it's a cliché, but I do feel like the walls are closing in. It feels really claustrophobic in here, like the building itself means me harm. I go out and I have to deal with social anxieties, I stay in and I'm filled with dread about the future ([Centre for Mental Health](#))
 - One of the things about having somewhere safe and secure is it means you can make long-term decisions and plan for the future. When I go home from work now, it's not just a roof over my head that I go back to...if you walk into my house now, someone's probably cooking, my step-kids are over, there's a nice atmosphere. It feels safe. Like home. ([The Health Foundation](#))
 - My home means everything to me, it is part of who I am. (Mrs James, 82. [Care and Repair England](#))

