



**Representing disadvantaged communities
in housing strategy and policy**
An empowering framework for practice

Judy Ling Wong CBE

Black Environment Network

Working across diverse sectors for multicultural environmental participation

*BEN uses the word “Black” symbolically, recognising that the **black communities are the most visible of all ethnic groups.** We work with white, black and other ethnic communities*

A network of individuals and organisations working for change



**“There is no such thing
as a
purely environmental initiative**

**A so-called
purely environmental initiative
is one that
has rejected
its social, cultural
and
economic dimensions.”**

Judy Ling Wong 1987

C'MON EVERYBODY!



As experts on climate change, many people ask us, what can I do personally about it?

We spoke to our team of scientists at the [Grantham Institute – Climate Change and the Environment](#) at Imperial College London and have created a digital feature to highlight [the most achievable ways you personally can make a difference.](#)

**9 Things you can do about Climate Change
Grantham Institute**



Sustainability depends
on:

*The Relationship of
People to Nature*

*The Relationship of
People to Each Other*

*Listening to local
voices followed by
policy and
implementation to
build trust and co-
creation is crucial*



Policy is for People – A Force for Change

Government, organisations, community groups, and individuals can work together to co-create policy and actions for our future

- The content of policy, strategy and resourcing are the **expression of commitment to people** around particular themes of concern
- The **integration of social, cultural, environmental and economic dimensions** can address the reality of multiple deprivation



80 % of the UK's population lives in urban areas



Many disadvantaged groups live in bleak soulless surroundings

**“Who we are
And
What we can
achieve
depends on
How we see
ourselves
against
The enormous
pressure
of
How others see us”**

Judy Ling Wong CBE





Building Diversity Equality and Inclusion

Building infrastructure

Making Inclusive Policy-Making Visible

Strengthening the Policy Position

Representation

Engagement

Provision





Making Inclusive Policy-making Visible

1. Put **high profile organisational champions** into place
2. Build the **prestige of action** for particular themes of concern
3. Sign up and make **supporter organisations and individuals** representing target groups visible
4. Use and support **representative instruments** as exemplified by Climate Reframe database of activists
5. Create resources and **promote named collaborative networks**
Promote and make **reports and research accessible**
6. Review and co-create **updated policies and strategies**
7. Map **monetary value and benefits**



Strengthening the Policy Position

Use related and wider policy instruments and reports already in place plus recognised overarching concepts to strengthen cross-sector policy making at different levels

- **Future of Generations Act Wales**
- **Human Rights Act**
- **The 9 Protected Characteristics**
- **Duty to promote Race Equality**
- **UN Habitat New Urban Agenda**
- **UN Habitat Declaration of First Global Stakeholders Forum**
- **Recognition of lived experience, links between health, wellbeing and quality of natural and built environment, the vast societal costs of multiple deprivation, climate justice**



First Global Stakeholders Forum – UN Habitat Assembly – New Urban Agenda

The New Urban Agenda embodies three guiding principles:

Guiding Principles	Actions
<p>Leave no one behind, ensure urban equity and eradicate poverty</p>	<ul style="list-style-type: none"> ▪ Providing equitable access for all, to physical and social infrastructure <ul style="list-style-type: none"> - Adequate housing and shelter at the center of the agenda - Public spaces as an enabler of socio-economic function of the city ▪ Recognizing and leveraging culture, diversity and safety in cities ▪ Enabling and strengthening participation and enhancing liveability and quality of life.
<p>Achieve sustainable and inclusive urban prosperity and opportunities for all</p>	<ul style="list-style-type: none"> ▪ Enhancing agglomeration benefits of urbanization and avoiding land speculation, ▪ Fair and equitable employment creation, productivity, competitiveness, diversification and ▪ Innovation through a sustainable economic development
<p>Foster ecological and resilient cities and human settlements</p>	<ul style="list-style-type: none"> ▪ Driving sustainable patterns of consumption and production, ▪ Protecting and valuing ecosystems and biodiversity, and ▪ Adapting to and mitigating the impact of climate change while increasing urban systems resilience to physical, economic, and social shocks and stresses

The New Urban Agenda: socio-environmental actions within human settlements



Habitat III

Today, the majority of people, an estimated 4 billion, live in urban areas. By 2050, it could be 6 billion.... It is clear that **it is in cities where the battle for sustainability will be won or lost.**

UN Deputy Secretary-General Amina J. Mohammed (2017)



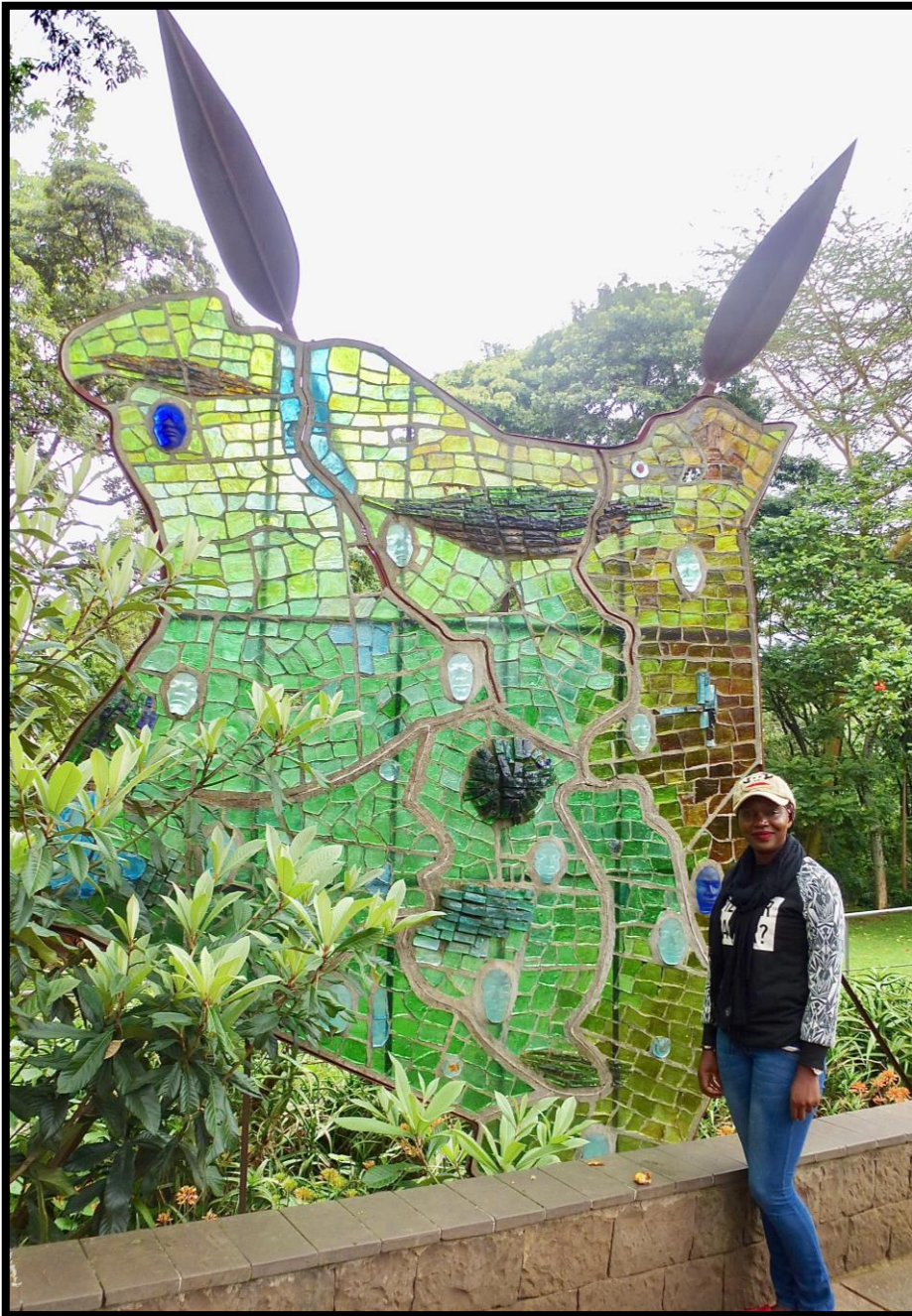


**Motivating people to take
action**

The Human Dimension

*“We love what we enjoy
and
we protect what we love”*

Judy Ling Wong CBE



Well-being of Future Generations (Wales) Act 2015

A more equal, prosperous, resilient, healthier and globally responsible Wales, with cohesive communities and a vibrant culture and thriving Welsh language... go beyond simple GDP measure towards what affects the **economic, social, environmental and cultural** well-being of Wales.

Well-being of Future Generations Act for the UK now going through the House of Lords

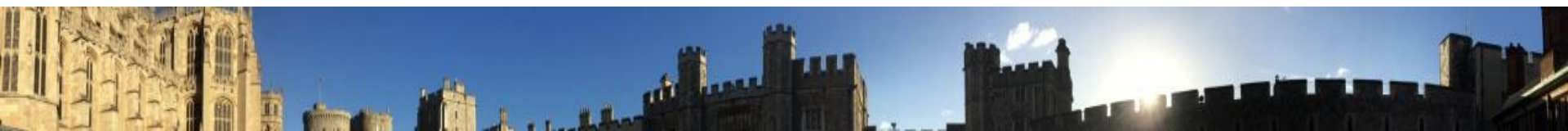
Our ethnic minorities are local and global people



People are the ultimate force for change

Community facing actions

- Theme 1 Representation**
- Theme 2 Engagement**
- Theme 3 Provision**





Theme 1 Representation – Affected communities should lead

- a. Put **community representatives** into place within **decision making structures**
- b. Nurture and support **diverse voices within decision making structures to share power**
- c. Nurture and support **community based champions to open up inreach**
- d. **Positive visibility** builds **diverse presence** and **counters negative stereotyping**
- e. **An integrated approach to policy and action, using a human rights based approach**
- f. **Support diverse local representatives to attend high profile national and international events**

CLIMATE REFRAME

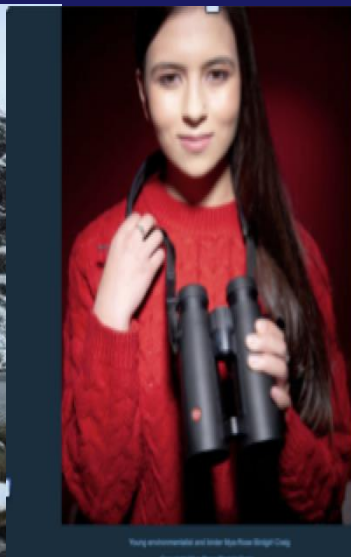
Amplifying BAME Voices in the UK Environmental Movement

Voices to articulate needs and release contribution

We are not at Square One

A model for open databases of multicultural activists and experts

CLIMATE REFRAME PDF



Inclusive public engagement confirms shared Local Historical Identity and builds a Sense of Belonging



Celebratory high profile planting event restoring the missing trees to the original 9 trees in the locality of Nine Elms in London with diverse presence in representation



Recognition of Diverse Presence through Cultural Features in Green Spaces

Mughal Garden Lister Park Bradford

Cultural Presence through Marking a Place with Memory

City Fringe Opportunities



The Sikh community planted a native oak woodland for everyone to enjoy

This city fringe project at Nottingham's Bestwood Country Park commemorates the 300th Anniversary of the Khalsa, their holy scriptures



Theme 2 Engagement – We benefit and we contribute

- a. Stimulate and encourage **grass roots movements** for change
- b. Connect with and **resource local diverse range of community groups**
- c. Work within the context of an **ongoing partnership as equal partners**
- d. **Identify cultural and other specific diverse dimensions** relevant to the actions to be implemented
- e. **Identify and address barriers** and support the **co-creation of solutions**

Building Green Neighbourhoods through transforming Streets

Placemaking for people and nature beyond parks and gardens



- **Urban residential streets can be targeted as part of our vision of planting millions of trees in the UK to contribute to net zero and meet needs**
- **Forward looking Local Authorities allow planting in tree pits and taking over of pavements with pots and other elements as long as a buggy or wheelchair can comfortably get through**



Bleak spaces for transformation are everywhere

Both low quality green space and hard spaces where people live are areas of potential





**They
can
be
like
this**





**These spaces
can be framed
as the forest
floor of our
Urban Forest
while enhancing
health and
wellbeing**



Indoor plants increased during Covid



Businesses can contribute too



Supported community spaces with links to local government release resources

Camden's 'Think & Do' Pop Up is a **community space** to give the chance to come together to develop ideas and projects tackling the climate and ecological crisis.

<https://www.thinkanddocamden.org.uk/>

The creation of a new civic space is a direct follow on from Camden's **Citizens' Assembly on the Climate Crisis** held in July 2019 which resulted in 17 recommendations. At its Full Meeting on 7th October 2019, the Council unanimously agreed to take forward all of them for its Final Action Plan

<https://www.camden.gov.uk/documents/20142/0/190723+Ideas+ballot+votes.pdf/7311979a-f984-fe06-b162-f5c9724579a9>



The Use of the Arts enables fun and informal education

Work with inclusive movements to unlock a vast contribution

How-to Guides. Resources. Information. Programmes of Activities. Networks

“Greener, Healthier, Wilder”

LONDON NATIONAL PARK CITY*



PLACES TO GO ▾

THINGS TO ENJOY ▾

MAKE A DIFFERENCE ▾

WHAT'S ON ▾

GET MORE INVOLVED ▾

ABOUT US ▾

Greener, Healthier & Wilder London - The London Mayoral Hustings
Hosted by London National Park City
FREE Christopher Ingold Theatre, UCL, London

GATHERING*
Sat 29 Feb 1030 - 430
Flourishing Diversity

With Mayoral Candidates:
Shaun Bailey, Conservative
Siobhan Benita, Liberal Democrat
Sian Berry, Green
Sadiq Khan, Labour - invited
Rosalind Roadhead, Independent
Mandu Reid, Women's Equality Party
Rory Stewart, Independent

With over 15 Inspiring speakers and Q&As including
Flourishing Diversity *Time & Talents * Every Person is Capable * Piogolusion * Cycle Sisters * Forest & Family * May Project Gardens * Valuing Trees - Greg Packman

Kabir Kaul's Rewilding London Together
Hear young people's perspectives on how we can cooperate to make London wilder together, and join the discussion.

FREE TICKETS www.nationalparkcity.london/gathering

GATHERING* 29 FEBRUARY

Come along to our next Gathering including Greener, Healthier & Wilder London - The London Mayoral Hustings. Be inspired to help bring the National Park City to life in your life and neighbourhood.

[more >](#)



JOIN THE SCHOOLS NETWORK

A network for London's schools & educators, to help 100% of London's children become #greener #healthier #wilder [more >](#)

12 WAYS TO MAKE LIFE IN LONDON BETTER
AUTUMN
TAKE ACTION
LOVE

READ THE 64 PAGE MAKER GUIDE

Jam packed full of examples of what makes London a National Park City - things people, communities, businesses and others are doing every day to make London greener, healthier, wilder. Be inspired to make your own difference. [more >](#)

- SIGN, SUPPORT AND PROMOTE THE LONDON NATIONAL PARK CITY CHARTER**
- DEVISE A LONDON NATIONAL PARK CITY STRATEGY INVOLVING ALL PARTS OF THE GREATER LONDON AUTHORITY - FROM TRANSPORT, HEALTH, EDUCATION, SKILLS AND BUSINESS TO CULTURE, SPORT, HERITAGE, ENVIRONMENT AND COMMUNITY.**
- PROMOTE LONDON'S NATIONAL PARK CITY IDENTITY, STORY AND PRESENCE TO INSPIRE MORE PEOPLE TO ENJOY LONDON'S GREAT OUTDOORS AND HELP MAKE LONDON GREENER, HEALTHIER AND WILDER.**
- CONNECT LONDONERS TO SHARE SKILLS, TRAINING, KNOWLEDGE, BEST PRACTICE, IDEAS, HOPES AND DREAMS BY SUPPORTING SEASONAL CITY-WIDE NATIONAL PARK CITY GATHERINGS.**
- PROTECT AND INCREASE LONDON'S GREEN, BLUE, PUBLIC, WILD OPEN SPACES AND IMPROVE THEIR QUALITY, QUANTITY, SAFETY, CONNECTIVITY AND DIVERSITY OF USE.**

5 COMMITMENTS FOR THE NEXT MAYOR OF LONDON

5 top asks and 99 What if ideas on how the next Mayor can make life in London better. [More >](#)

Charter of the LONDON NATIONAL PARK CITY*
July 2019

WE ARE WORKING TOGETHER FOR BETTER:

- LIVES, HEALTH AND WELLBEING**
- WILDLIFE, TREES AND FLOWERS**
- PLACES, HABITATS, AIR, WATER, SEA & LAND**
- TIME OUTDOORS, CULTURE, ART, PLAYING, WALKING, CYCLING AND EATING**
- LOCALLY GROWN FOOD AND RESPONSIBLE CONSUMPTION**
- DECISIONS, SHARING, LEARNING AND WORKING TOGETHER**
- RELATIONSHIPS WITH NATURE & EACH OTHER**

SIGN THE CHARTER

The Charter of the London National Park City sets out our aims, values and ways of working and explains how individuals, groups and organisations can take action together on our shared aims.

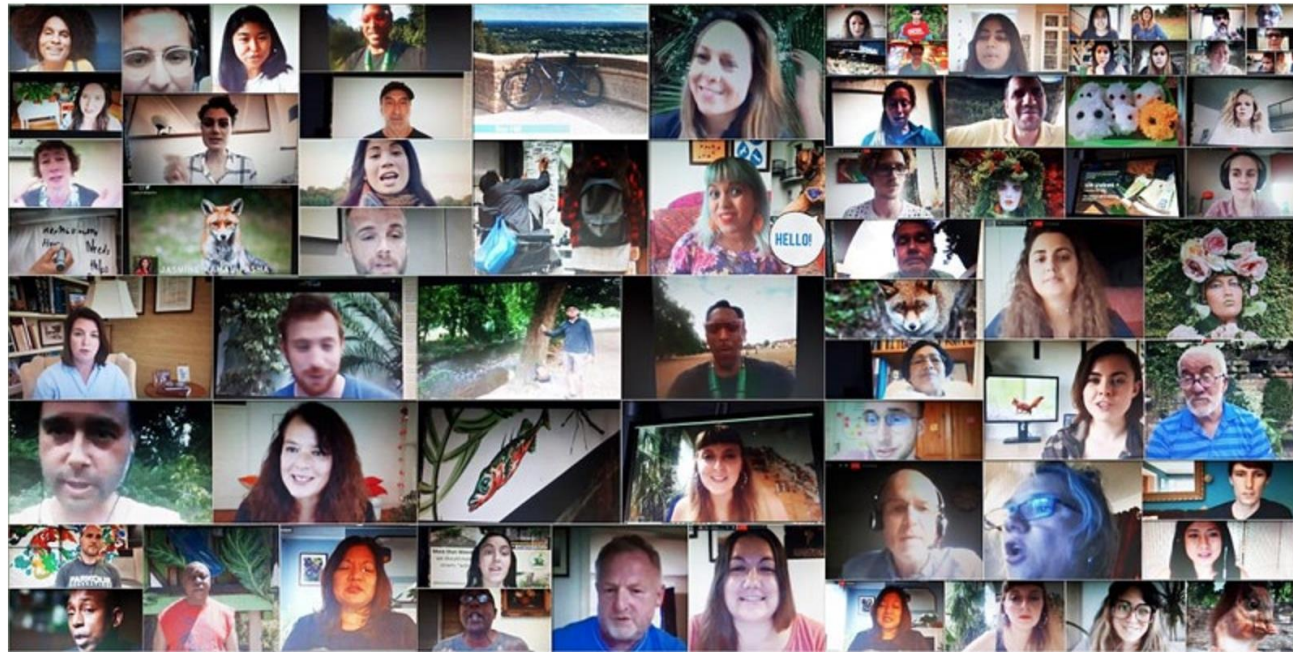


LONDON NATIONAL PARK CITY RANGERS

Will be working to tackle the climate and ecological emergencies while improving people's health and wellbeing. [more >](#)

Amplifying Local and Global Voices and Networks

Our Ethnic Minorities represent Global Majorities



**100 Voices
Local and Global
Events**

**The National Park
City Foundation is
working towards
25 National Park
Cities by 2025**

We organise events for cities around the world. You can find them over on our www.nationalparkcity.org website at

www.nationalparkcity.org/events

For example:

29 Oct 2020 – How to make cities #GreenerHealthierWilder! Voices from around the world >

Monthly – Regular Monthly Open Meetings for Cities starting campaigns to make your city a National Park City or working to achieve the status for some time already. >



Theme 3 Provision – A framework to release benefits and address needs

- a. **Build cross-sector links**, recognising the interconnectedness of environment, health and diversity and equality, with training for outreach
- b. **Embed diversity and equality across sectors** to establish a framework of relevant provision
- c. **Resource local community based groups** such as youth clubs, or luncheon clubs for elders
- d. Give information to improve health through **personal action for self-care**
- e. Provide **interpretation services** and **multi-language information** – use Google Translate
- f. **Establish representative networks for a range of diverse groups in workplaces** for support, consultation, and advocacy
- g. **Improve the local environment** – housing, green spaces, streetscapes etc.
- h. **Build equal access** to coming new wave of **green jobs** to achieve net zero
- i. **Policy and actions** including **activities for enjoyment and informal learning**



**Wildflower meadows and clusters of trees
to enable a joyous experience of nature at scale
involving communities on social housing land or parks**



A Model Multifunctional Space – Burgess Park

Backyard to the largest housing estate in Europe combining contact – from meadows community beehives to outdoor exercise classes and a state of the art BMX track

Building the Capacity and confidence to Re-imagine Spaces



The power of re-imagining opens up all our futures

Dagenham & Barking's Every One Every Day initiative has a elaborate community programme including extensive maker spaces



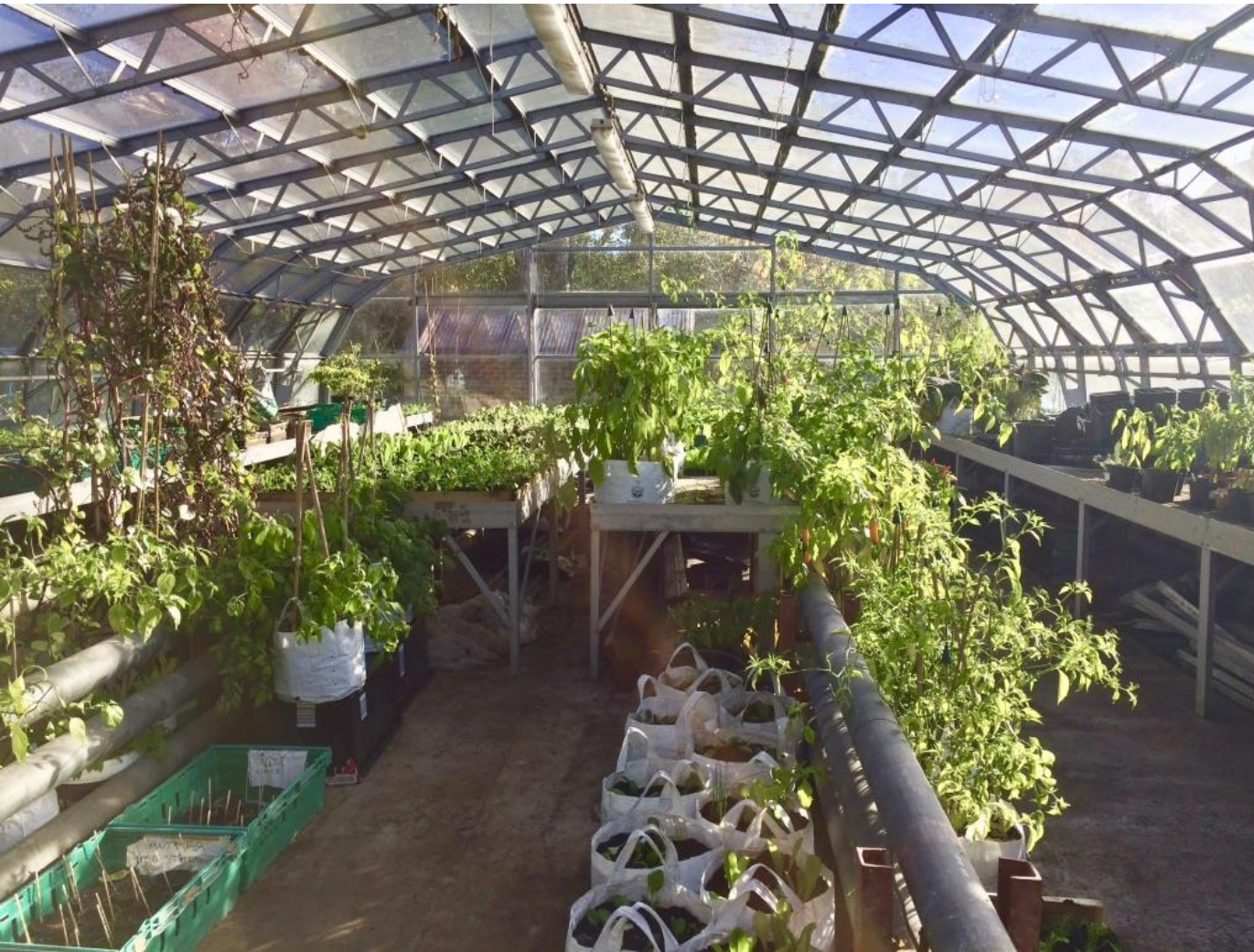
Seeing spaces differently livens up the Built Environment

Think out of the box - Even Pedestrian Crossings are Spaces for Creativity

The Popular Perception of Food Growing and Gardening as Nature

The Lambeth Plots initiative – ARUP and Myatt's Fields Park

Mapping Lambeth's food growing potential and enhancing Food Security and Resilience



Myatt's Fields Park grows and gives away 50,000 plug plants for allotments, gardens and balconies to enable the community to extend the growing and harvesting season

Green School Grounds and Outdoor Learning Foundation for a Life with Nature



Natural Thinkers 10 commitments:

1. Children have access to a range of natural areas and materials **outside.**
2. Children have **opportunities to grow, pick and taste produce.**
3. Children have access to **gardening and digging.**
4. Children **care for their natural environment.**
5. Children **engage with the weather and seasons.**
6. Children have **opportunities to engage with wildlife.**
7. Children have **daily access to the outside.**
8. Settings ensure **no child is excluded from outdoor activities.**
9. Settings ensure **parents have opportunities to get involved with Natural Thinkers activities.**
10. **At least 1 member of staff must have attended Natural Thinkers training.**

The Countryside and All of Nature is Also Ours



- Trips as of right to access our most beautiful natural places
- Knowing nature at large inspires different local actions and rich local futures



COP26

Local and Global

***Climate Justice calls for
people centered policy***

- **People centered policy**
- **Diverse representative voices**
- **Building a movement of diverse people, recognising their agency to green their local environment and contribute to net zero**
- **Health and well-being as a fundamental feature of Resilience**
- **Linking living conditions, jobs and the environment**
- **National and international programmes of developmental activities for green infrastructure**

***Local actions sit within national and
international frameworks of policy***



New Wave of Green Jobs to meet the legal requirement of Net Zero

The Green Jobs Taskforce forms part of the government's ambitious plan to build back greener and achieve net zero emissions by 2050. **£12billion. Creation of 2 million jobs**

The Green Apprenticeships Advisory Panel, supporting the Taskforce, will help focus efforts to make sure the right skills are in place for the future workforce:

- **enhancing our current apprenticeships** to ensure that they meet the needs of the employers within the growing green economy
- **creating new apprenticeships** to reflect new occupations to meet the challenge to reach net-zero carbon

What new green jobs do you need and want locally?

GREENPEACE

Küresel ısınmaya duyarsız kalırsak,
yeryüzündeki canlı türlerinin dörtte biri yok olacak.



www.greenpeace.org.tr

People and nature are in crisis

IF NOT NOW - WHEN?

extinction



ARE WE THE
LAST GENERATION?

extinction



Let us aspire to provide and enhance housing and local environments through inspiration and infrastructural actions

People and Nature Thriving Together



Cultural Ways of Seeing

From the Ageless Wisdom

**Policy
is
the expression
Of
Love-Wisdom
and
its outcome
is
Beauty**



Contact: judy@ben-network.org.uk

www.judylingwong.co.uk

www.ben-network.org.uk

Downloadable resources/publications on BEN website