

WE CAN SOLVE POVERTY IN THE UK

A strategy for governments, business, communities and citizens

#solveukpoverty

JRF's strategy to solve poverty in the UK

February 2017

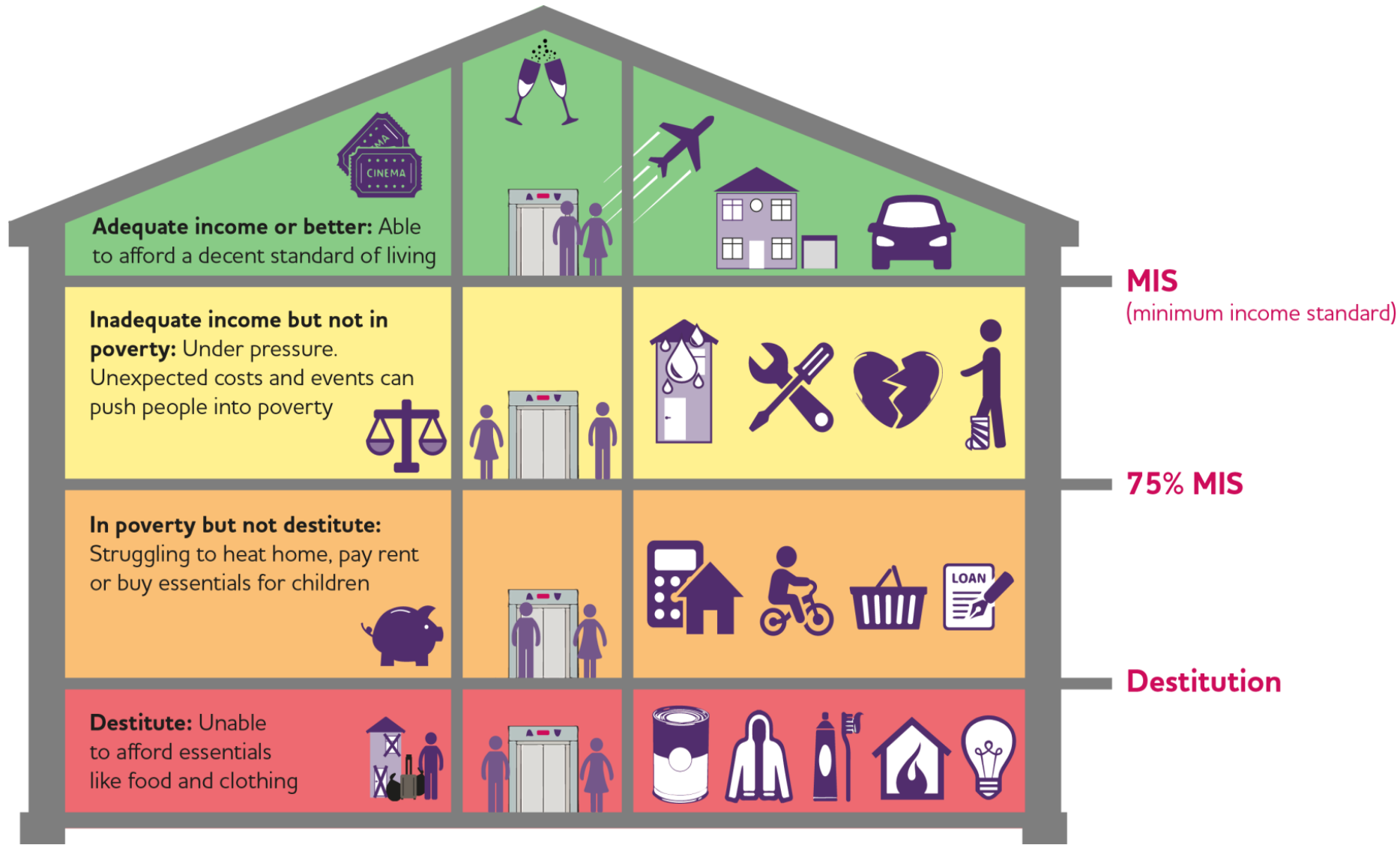
Outline

- What is poverty?
- Causes and costs
- JRF's vision
- JRF's strategy for solving poverty
- What can local areas do?

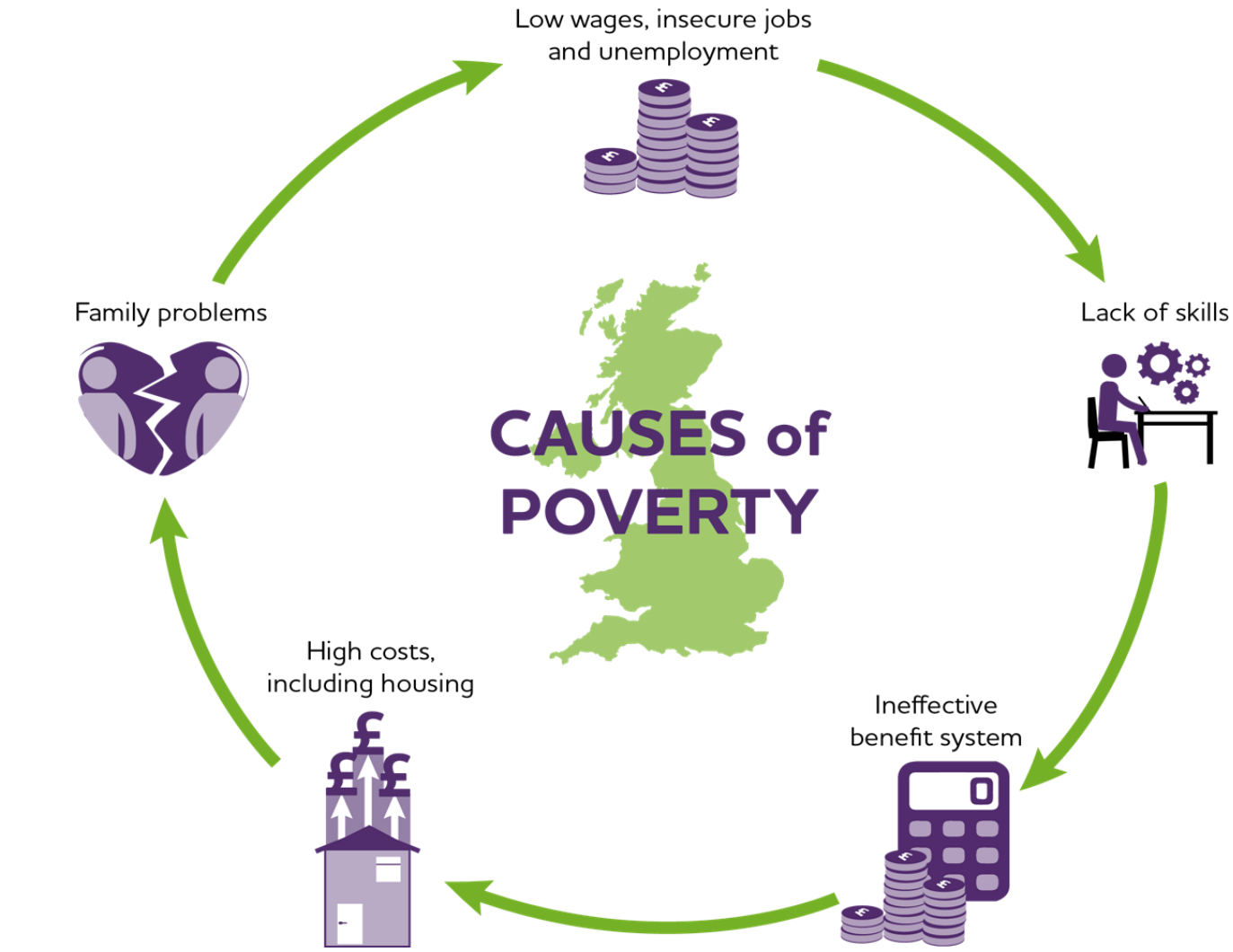
What is poverty?



There are different levels of poverty



What causes poverty?



Poverty is real in the UK

Total number

13.5 million

people in the UK are living in poverty



7.9 million working-age adults



3.9 million children



1.6 million pensioners

Key Stats



39%

of people in poverty live in a family where at least one person is disabled



67%

of all people in poverty live in rented properties



35%

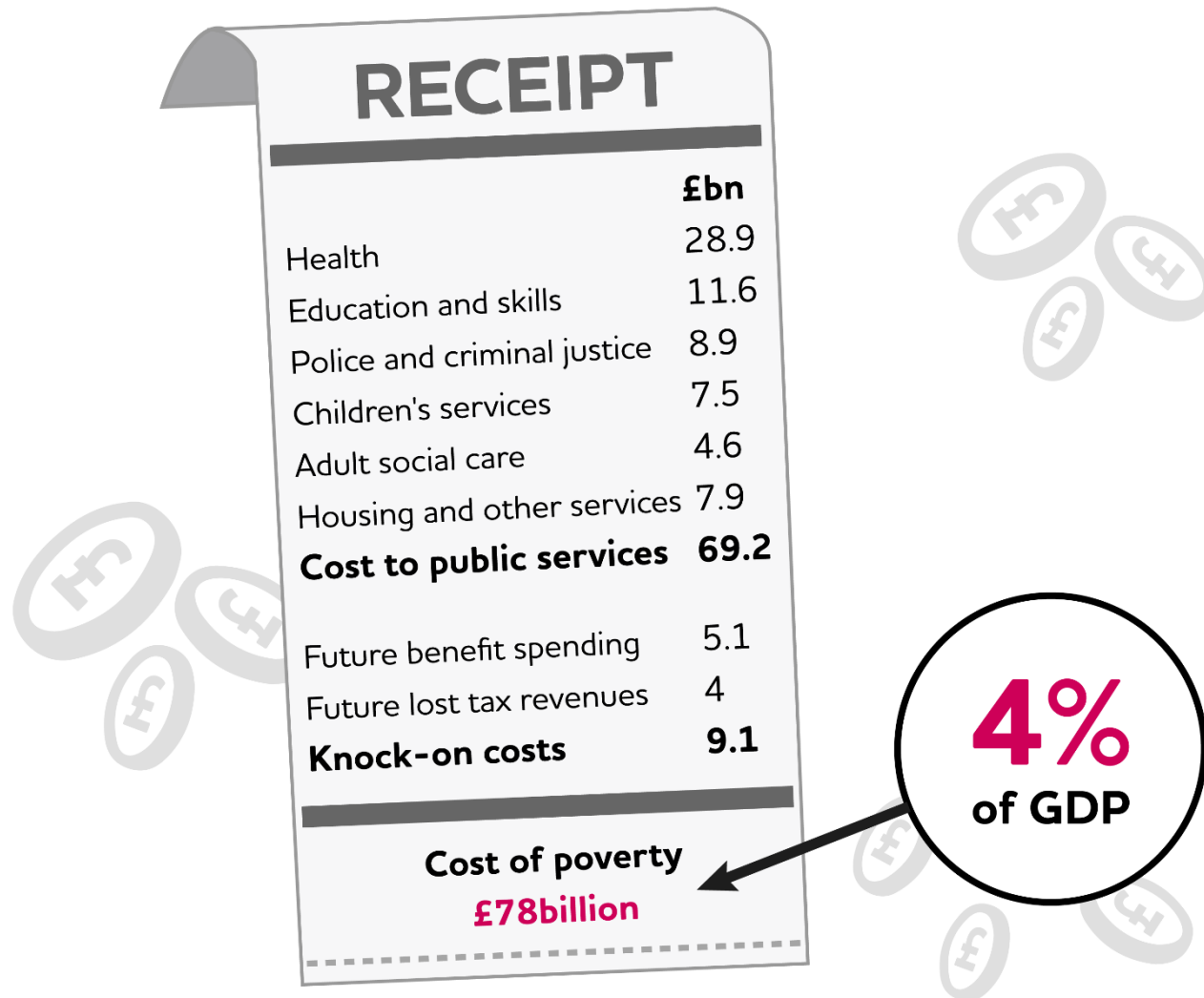
of children in poverty live in a lone-parent family



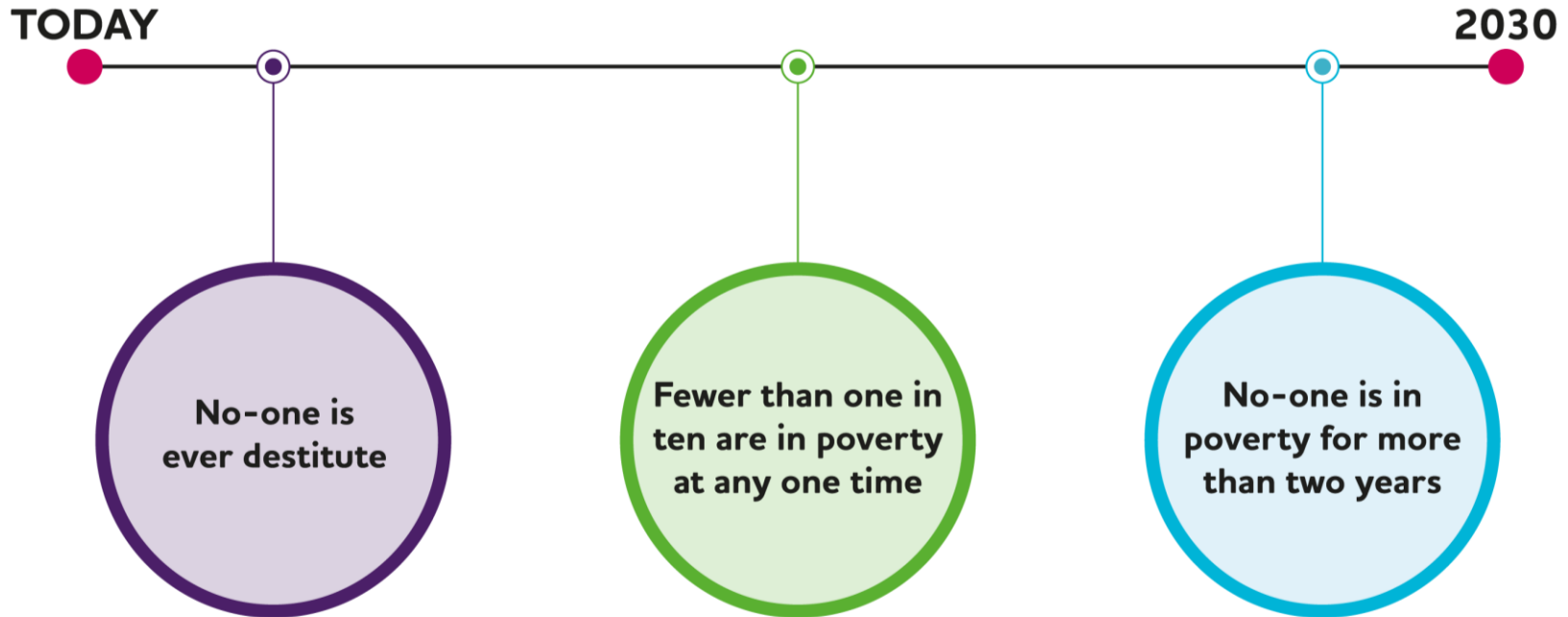
66%

of working-age households in poverty have someone doing paid work

What are the costs of poverty?



Our vision for a poverty-free UK: by 2030...



JRF's strategy to solve poverty in the UK

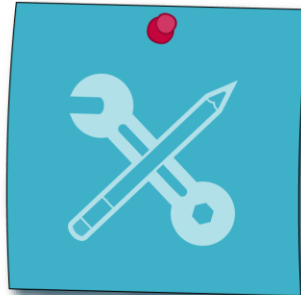
5 point plan to #solveukpoverty



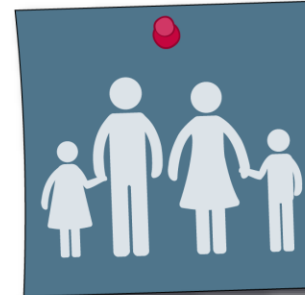
Boost incomes
and reduce costs



Deliver an effective
benefit system



Improve education
standards
and raise skills



Strengthen families
and communities



Promote long-term
economic growth
benefiting everyone

Boosting incomes and reducing costs

What can be done locally?

- Support (voluntary & higher) living wage employment
- Affordable housing development
- Address key costs of living – energy, credit

Delivering an effective benefit system

What can be done locally?

- Manage transition to UC (esp. for vulnerable groups)
- Co-locate JCP with local authority and voluntary sector services
 - an “employment and income hub” and gateway to wide range of services and benefits
 - Co-ordinated welfare assistance to support benefit take-up and welfare and debt advice

Improving education and skills

What can be done locally?

- Benchmarking with best performing schools of similar types
- Support good quality careers advice in schools
- Provide post 16 career support hubs with links to high-quality apprenticeships, training and employers

Strengthening families and communities

What can be done locally?

- Review quality and provision of childcare to meet local demand
- Trial relationship support and advice/parenting support
- “Housing First” for adults with complex needs + intensive flexible support

Promoting inclusive economic growth

What can be done locally?

- Local ‘anchor’ institutions use collective spending power, know-how and networks to better connect jobs and opportunities to benefit disadvantaged people and places
- Use planning and procurement powers to support job creation and apprenticeships
- Use devolution of adult skills budgets to connect training, employment support and job creation

Taking action on poverty locally

- Consider how to address 5 areas for action locally
- Retain core services
- Address destitution/wider poverty over life course
- Take a systemic city (region)-wide approach
- Assess devolution opportunities
- Plan for future risks (Brexit, economic shocks)
- Use voice at national level

For more information

Twitter: @jrf_uk *#solveUKpoverty*

Web: www.jrf.org.uk

Email: chris.goulden@jrf.org.uk

Twitter: @chris_goulden