

The Outcomes4Health Online Payments and Monitoring System

Isabel Carrick, Public Health Lead
Simon Parker, Information & Research
Officer



EAST RIDING
OF YORKSHIRE COUNCIL

Introduction

- Adoption of the O4H platform in the East Riding of Yorkshire
- How it works
- Learning from the implementation process – Successes and Challenges
- Using O4H to strengthen the commissioning cycle



Background

- O4H/Pharmoutcomes origins
- New approach to PH commissioning in LA from 2013
- O4H Task and Finish Group
 - Process of implementation
 - Developing expert resource
 - Organisational buy-in



Provider organisations currently using

O4H

- 111 Pharmacy users
- 41 GP surgeries
- 9 Leisure centres
- 8 Other NHS settings
- 2 Other
- 171 TOTAL USERS



Current use of O4H

- 32 Reporting templates currently in use
- 23 currently being designed
- Minimum 5 more services to be placed on the system this year



Current use of O4H

Existing examples:

Health checks

Smoking cessation

Sexual health -

- Integrated SH and GP
LARC and Pharmacy
EHC

- Developing:
- Exercise Referral
- Health Trainers
- Live Well



ⓘ This page has been restored after an intervening prompt: *Security word check*. Please check carefully that we have navigated to the correct page before continuing.

Service Design

NHS Health Checks 2016-17 (Preview)

- Browse Service Library
- View service accreditations
- Edit Service Design
- Preview Claim for this service

Provision Reports Preview

 Basic Provision Record (Sample)

 NHS Health Check - GP Referral (Sample)

 NHS Health Check - Dataset (Sample)

This notification is disabled

Health Check Date

Name

Date of Birth
Enter as dd-mmm-yyyy (eg 23-Feb-1989)

Gender Male Female

Ethnicity

Postcode

Address

NHS Number
If neither the client nor the provider know the NHS Number, you can enter "Unknown". If the client has never been issued with an NHS Number, you can enter "Not Issued".

Contact Details

Patient's GP Practice
Type in any part of the the GP practice name or address to search for the GP practice

For a list of branch surgeries, [click here](#).



Main uses of O4H

- Payments
- Contract Monitoring
- Service improvement
- Compliance



Payments

- System can be set to automatically run claim reports and generate invoices on a given date
- Individual provider invoices, itemised for tariff based contracts
- Payments team have access to system and can process payments



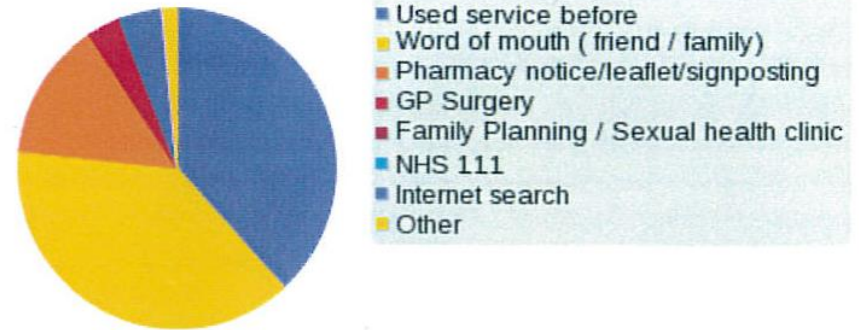
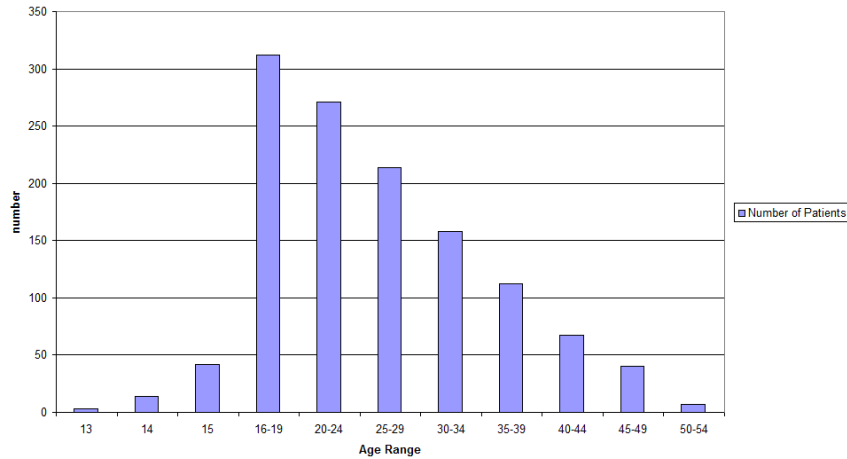
Contract monitoring

- 2 methods of contract reporting on O4H:
 - Provider input – multiple users/ sites
 - Commissioner upload – provider supplies single CSV file of cleansed data
- Standard auto-reports can be set up monthly to come direct to commissioner
- PDF format allows quick overview of activity



Monitoring/service improvement

Age profile of attendees for EHC 2014/15



Health Checks Service results from 2015/16

- OUR data
- 5000+ lines of data
- Analysed by postcode/8 IMD indicators/Ward
- Analysis of referrals to GP - Why? Hypertension? BMI? Qrisk
- Analysis of referrals to other interventions such as smoking cessation or Health Trainers
- Analysis of providers of service
- Analysis of Age, location, marketing, all sorts!
- OUR DATA!!!



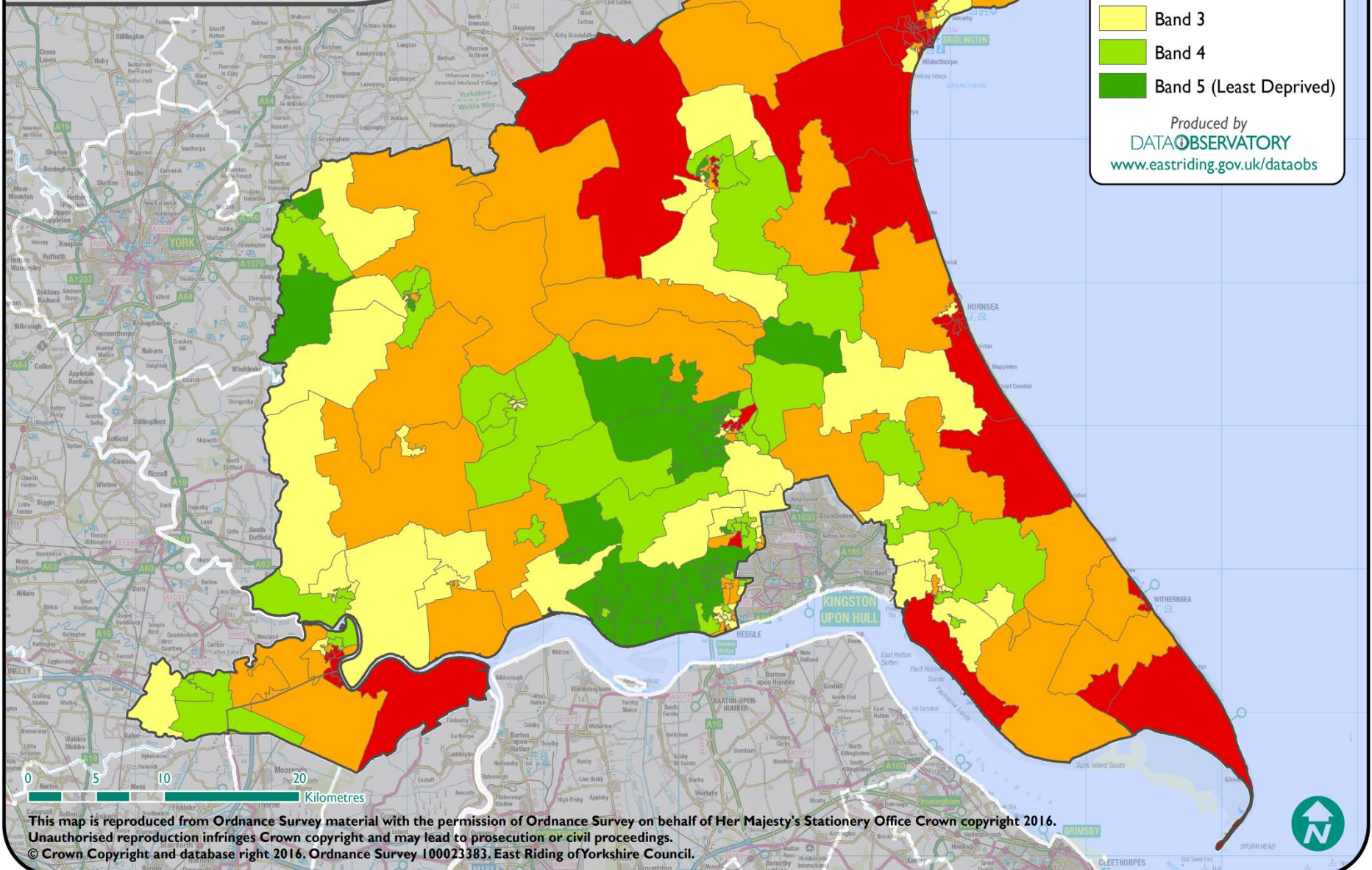
East Riding of Yorkshire LSOAs by Local Deprivation Quintile

IMD 2015

Local Deprivation

- Band 1 (Most Deprived)
- Band 2
- Band 3
- Band 4
- Band 5 (Least Deprived)

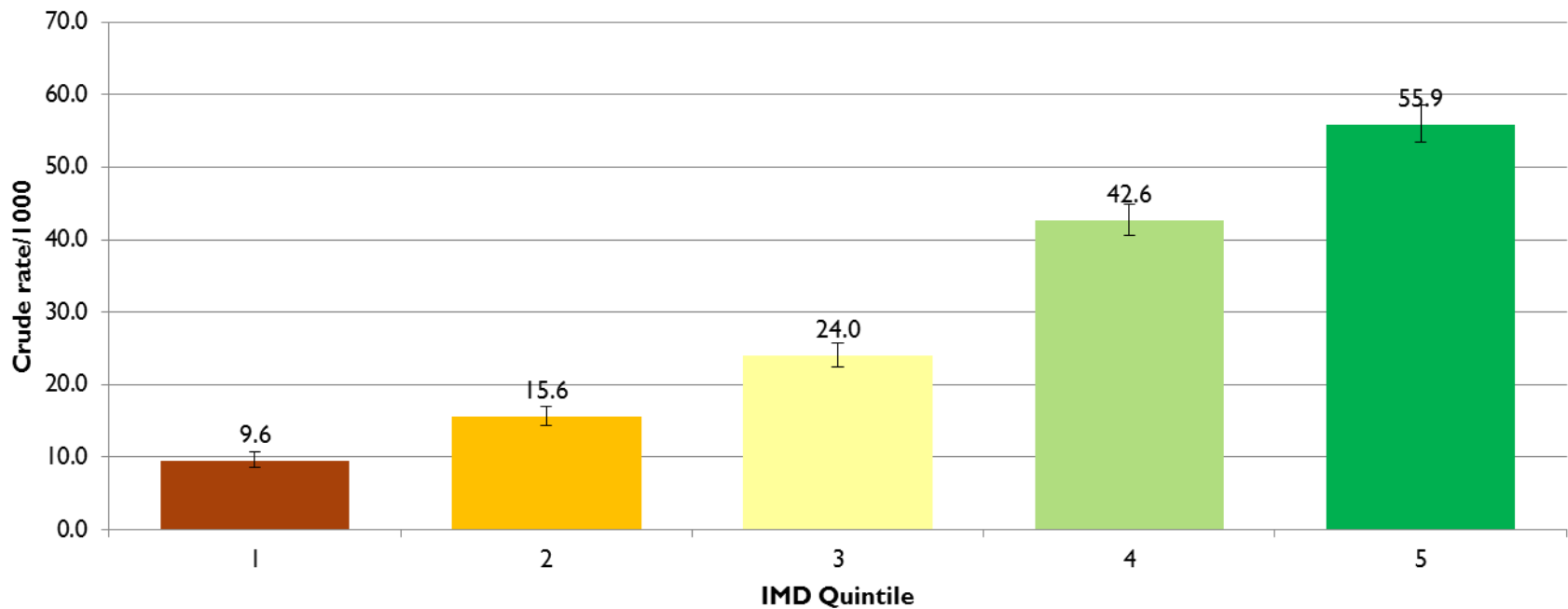
Produced by
DATAOBSERVATORY
www.eastriding.gov.uk/dataobs



This map is reproduced from Ordnance Survey material with the permission of Ordnance Survey on behalf of Her Majesty's Stationery Office Crown copyright 2016.
Unauthorised reproduction infringes Crown copyright and may lead to prosecution or civil proceedings.
© Crown Copyright and database right 2016. Ordnance Survey 100023383. East Riding of Yorkshire Council.

Health Checks results

Health Checks 2015/16 vs IMD Quintile
Crude Rate/1000 popln.



Compliance

- Data analysis and audit
- Declaration of Competence gateway
- Monitoring audit can check claims relate to actual individual patients
- Programme of audit visits with Contract team colleagues



O4H – an evolving platform

Distance travelled tool

- As more primary care providers combine, enables true picture of patient flow to be maintained
- Audit compliance function – accurate data

Onward referral and notification capability



Challenges

Potential provider resistance to:

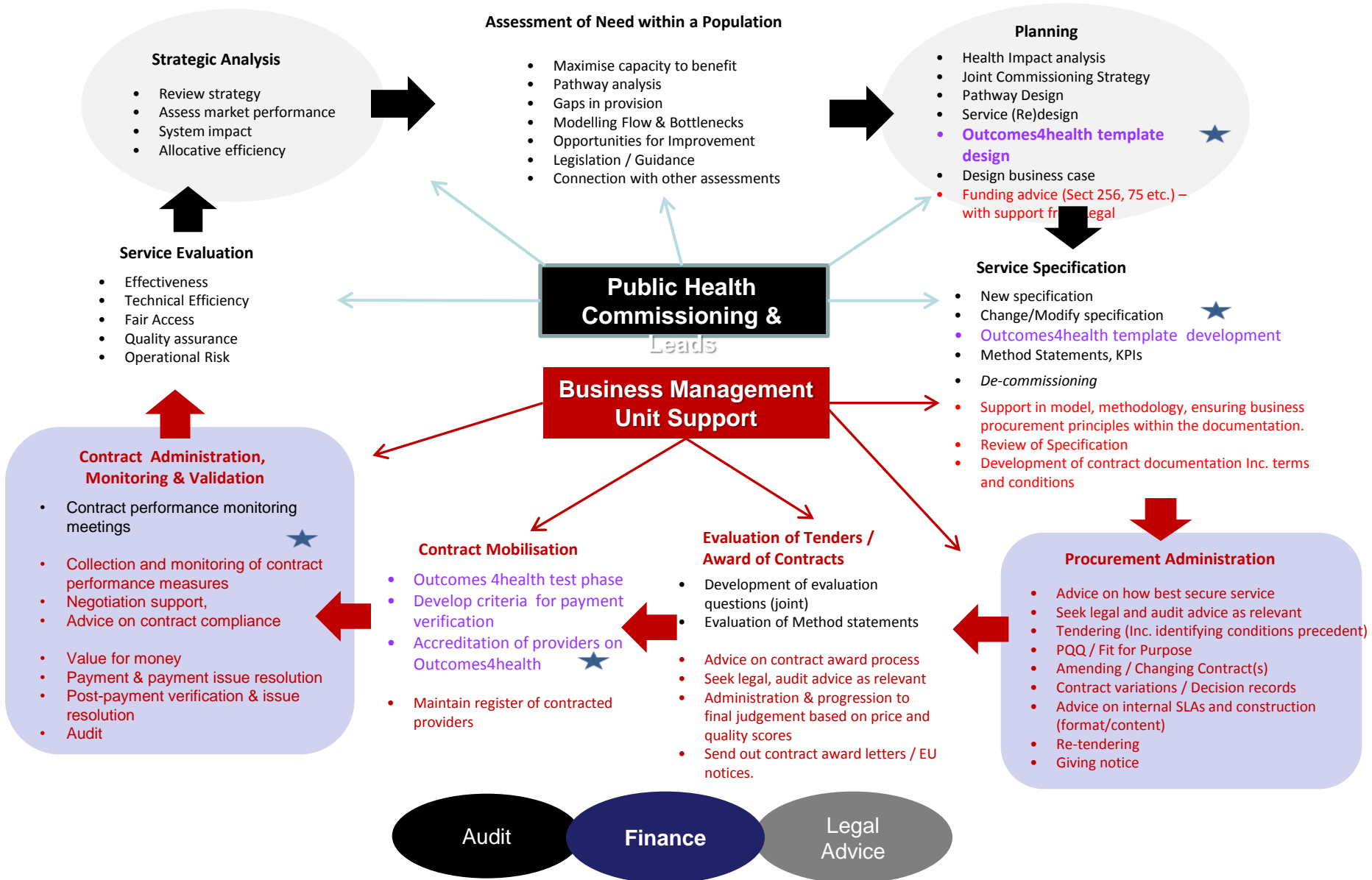
- Alternative reporting system
- Provision of patient data and process for consent

Cultural change

- Data ownership
- Organisational roles and responsibilities



Commissioning Model for Public Health contracts



THANK YOU

Questions?

