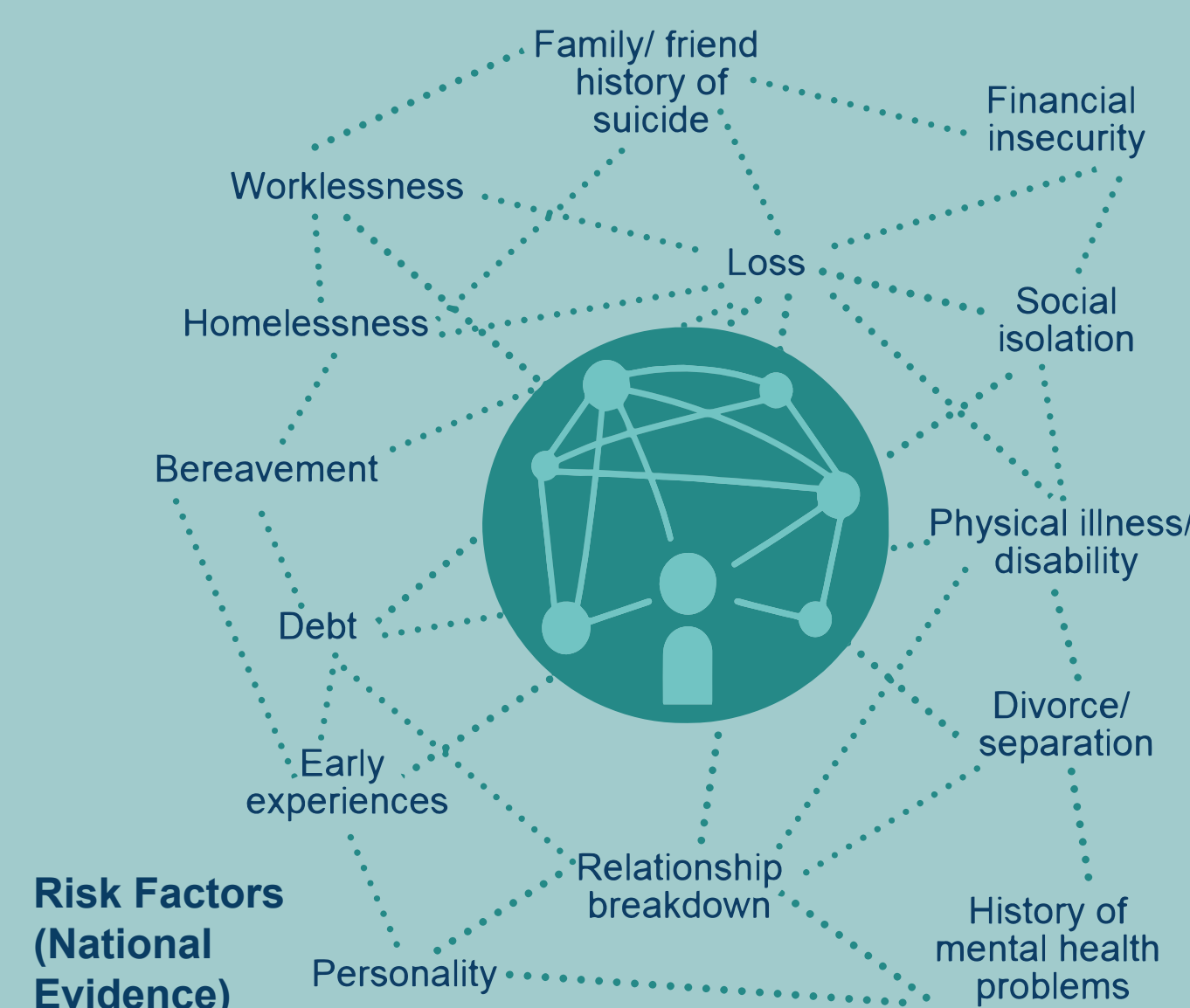


## 1. Background

- Recommendations from the National Suicide Prevention Strategy for England
- Suicide prevention work informs and supports the wider Public Mental Health agenda
- We have a responsibility to understand and reduce inequalities in the city
- We aim to be a compassionate city that cares about our communities' health and wellbeing
- Reducing suicide is a priority for Leeds



## 4. Action

- Sharing audit findings as evidence base
- Shaping, developing and agreeing the Leeds Strategic Suicide Prevention Plan
- Broad ownership of Suicide Prevention agenda and disseminating data
- Improving robustness of data
- Reviewing real-time surveillance options
- Developing meaningful and targeted local action e.g. men's groups, Adopt a Block
- Commissioning
- Action feeds into Suicide Prevention agenda being valued and prioritised

# Suicide Prevention: The Leeds Approach

Public Health, Leeds City Council

- *Chief Executive of Leeds City Council*
- *Executive Board Member for Health and Wellbeing*
- *Champion Mental Health*

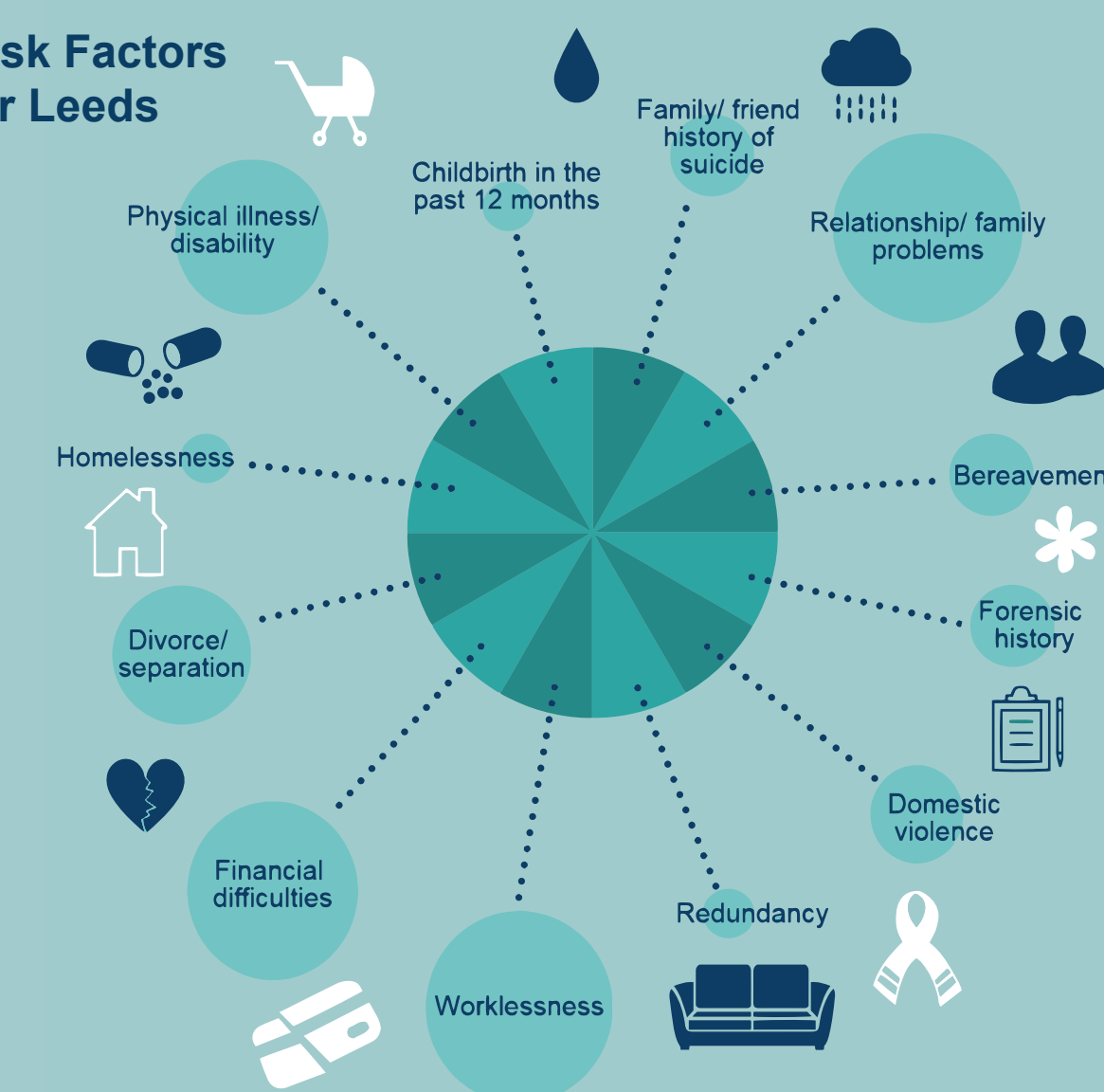
- *Full Council Deputation in support of commitment to prevent suicides in Leeds*
- *Essential*



## 2. Suicide Audit

- Working in partnership with West Yorkshire Coroner's Office
- Undertaken every 3 years as per PHE recommendations
- Analysed all suicides in Leeds between 2011-2013 using Coroner's records
- A rigorous approach taken to data collection
- Intensive but invaluable: supports focused prevention planning and enables targeting of high risk groups and areas
- Helps to review interventions of what works tailored to local need

### Risk Factors for Leeds



## 3. Key findings of the Suicide Audit

- 213 people were included in the audit
- The highest age group was 40-49 years
- 82.6% male (n=176) and 17% female (n=37)  
Male 5:1 Female (National gender ratio for suicides: 3:1)
- This means for every 1 female death there were 5 male deaths by suicide.
- 81% of those identified were White British
- 55% of audit cases lived in the most deprived 40% of the city

