

# A Targeted Approach to Reducing Cancer Health Inequalities in Leeds

Leeds City Council's Public Health Cancer team lead a programme of work to prevent cancer, raise awareness of signs and symptoms and increase uptake of cancer screening. This programme reports into the Leeds Cancer Population Board.

**Evidence** demonstrates that screening uptake is lower and outcomes poorer among people living in areas of higher deprivation and specific groups including people with learning disabilities, severe mental illness (SMI) and from culturally diverse communities. \*

The Public Health Cancer team takes a targeted approach to reduce these unacceptable health inequalities through:

**Commissioning** of the Leeds Health Awareness Service which raises awareness around cancer prevention, signs and symptoms and encourages uptake of screening.

Provision of **system leadership** for the Leeds cancer prevention, awareness and increasing screening steering group and work plan.

Building strong and effective partnerships including the establishment of **three health inequality task groups** The first group was established in January 2021.

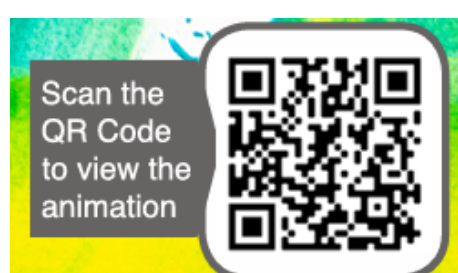
## Examples of targeted activity developed through.....

The Cancer and Learning Disabilities Task Group

Development of a GP bowel screening flagging pathway for people with learning disabilities

Bowel screening training for frontline workforce

Commissioned a creative arts project raising awareness around cancer risk reduction with people with learning disabilities



**Acknowledgments:** With thanks to the dedication, passion and enthusiasm of the broad range of local partners that make up the three health inequality task groups and have made and continue to make these projects possible.

**For further information:** Please contact Louise Cresswell, Health Improvement Principal (Cancer), Public Health, Leeds City Council, Email: [louise.cresswell@leeds.gov.uk](mailto:louise.cresswell@leeds.gov.uk)

### References:

[Population screening: reducing inequalities for people with a learning disability, autism or both - GOV.UK \(www.gov.uk\)](https://www.gov.uk/government/news/population-screening-reducing-inequalities-for-people-with-a-learning-disability-autism-or-both)  
[Severe mental illness \(SMI\): inequalities in cancer screening uptake report - GOV.UK \(www.gov.uk\)](https://www.gov.uk/government/news/severe-mental-illness-smi-inequalities-in-cancer-screening-uptake-report)  
[British Journal of Nursing - Inequalities in cancer screening, prevention and service engagement between UK ethnic minority groups](https://www.bjnp.com/inequalities-in-cancer-screening-prevention-and-service-engagement-between-uk-ethnic-minority-groups)

The Cancer and Culturally Diverse Communities Task Group

Cancer key message training delivered to 18 Migrant Community Networkers from 11 different communities who delivered 25 local events with their own communities

Prostate Cancer awareness raising project with black men

The Cancer and Severe Mental Illness Task Group

Commissioned insight into the barriers and enablers to accessing screening for people with SMI to inform further work.

### Impacts of the task groups:

- Co-ordinated and effective working across partners
- Funds successfully gained from a range of sources through joint funding proposals
- Development of bespoke targeted projects
- Contributing towards the strategic outcomes of the Leeds Cancer Population Board