

Public Health Workforce Development – Y&H

05 February 2024

Chris Sharp, Regional Workforce Development Manager Y&H
chris.sharp@dhsc.gov.uk

&

Val Barker, Head of School of Public Health Y&H, NHS England
val.barker1@nhs.net



Workforce Development Steering Group

- One Workforce Plan for the Y&H PH system
 - Chaired by Victoria Eaton, DPH, Leeds
 - NHSE WT&E - School of Public Health – Head of School
 - OHID Workforce – Workforce Manager & Consultant Lead
 - UKHSA & NHSE/I - Deputy Director level
 - Faculty Rep - Faculty Advisor for Yorkshire and the Humber
 - ADPH Rep – Network Manager
 - Uni/FE Rep – Uni of Leeds
 - Knowledge and Intelligence – Workforce Lead
 - Regional PH Reps - Consultant and Practitioner (North, East, South and West)



Workforce priorities for Y&H



1 We maintain a multi-disciplinary approach to public health workforce development covering all domains of public health and the new and emerging organisations that protect and improve health

2 Public health is still recognised as a distinct speciality in the Yorkshire and the Humber

3 The public health system is able to attract and retain the workforce it needs to protect and improve health

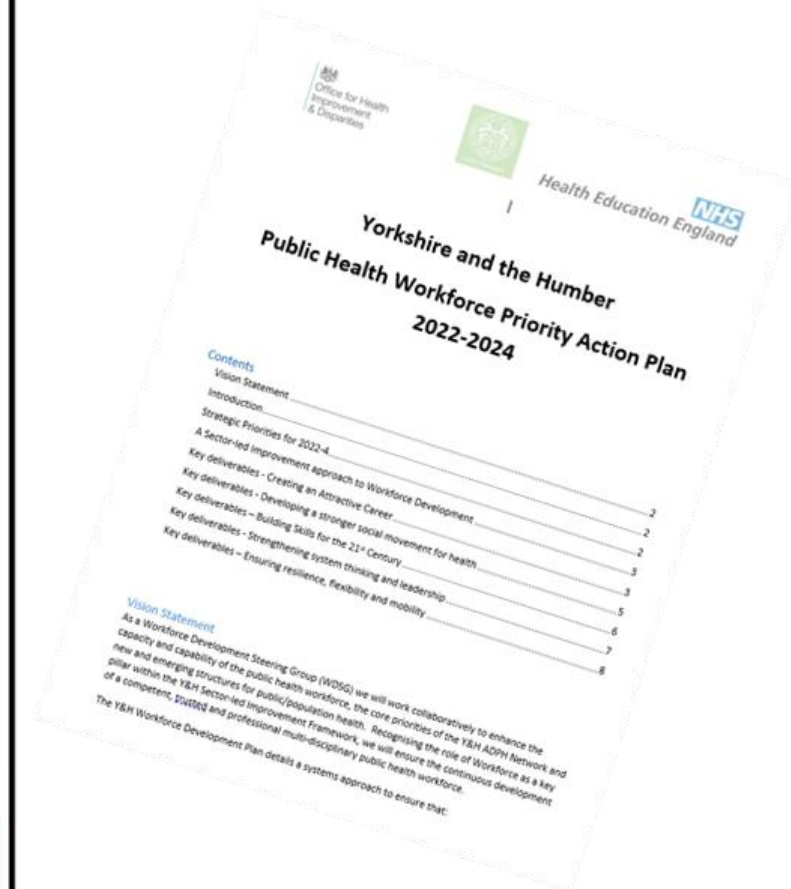
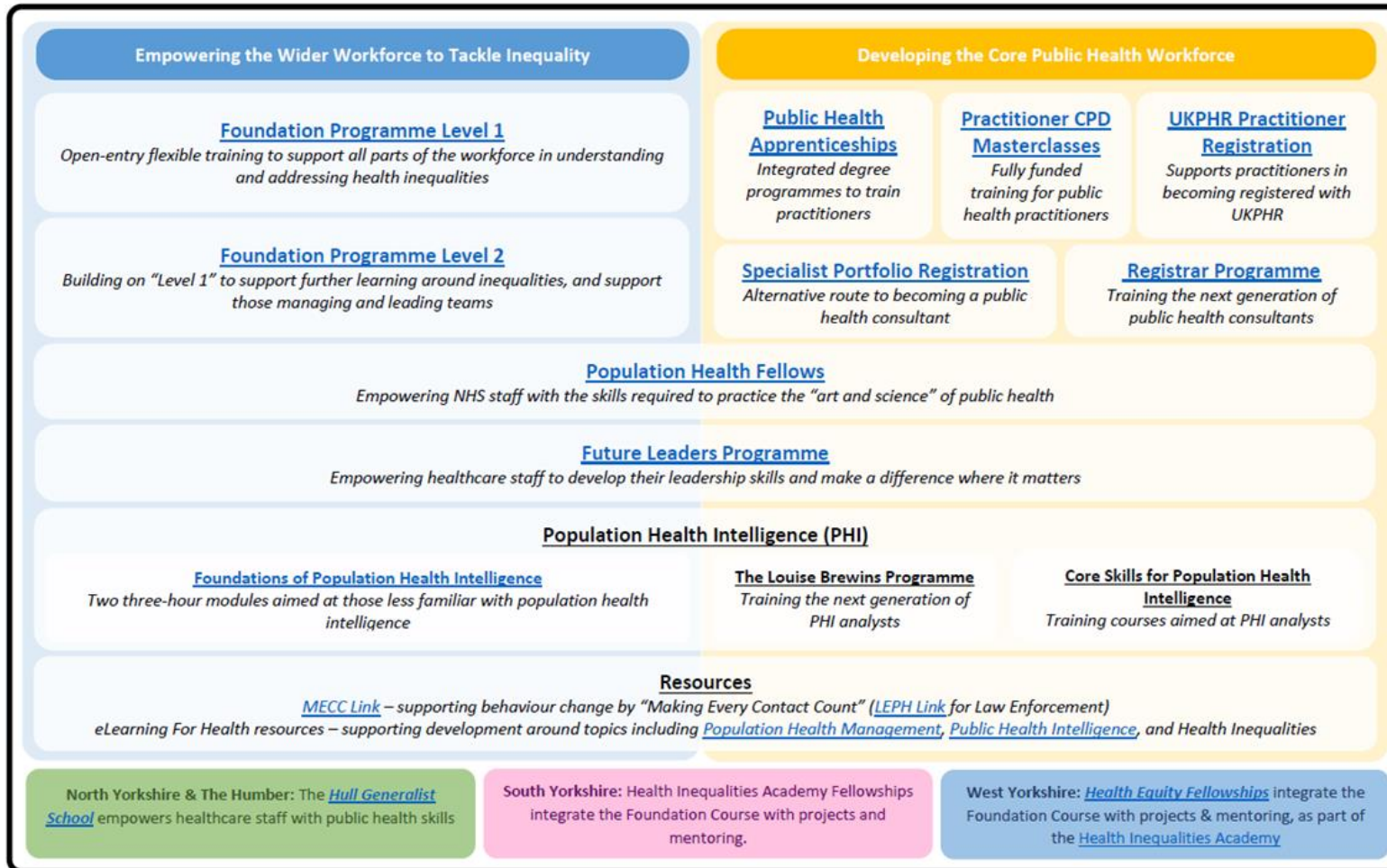
4 The workforce has access to collaborative shared learning and CPD, with a particular focus on the development of generalist public health skills across in Core Public Health teams

5 The region's wider workforce is actively engaged in delivering the public health agenda with a focus on the Voluntary, Community and Social Enterprise sector (VCSE) and Anchor Institutions

Partnership approach to develop capacity and capability of the public health workforce



The Yorkshire and Humber School of Public Health
Building a Public Health Workforce



Core and Wider Public Health Workforce

Wider Public Health Workforce

- Between 15 to 20 million people in the wider public health workforce
- Health and social care, teaching and education, childcare, welfare, sports and fitness, protective services (Fire, Police, housing, planning, environment)

Public Health Practitioner

- Generic umbrella term, a recognised core public health profession with an independent regulator (UKPHR)
- Works across the full breadth of public health: Health Protection, Health Improvement and Healthcare Public Health and supporting functions (Academic PH, Knowledge and Intelligence)
- Roles: Health Protection Practitioner, Screening and Immunisation Coordinator, Smoking Cessation Advisor, Substance Misuse worker, Public Health Commissioner, Sexual Health Facilitator...lots more

Public Health Specialist/Consultant

- Public health specialists and consultants are strategists, senior managers or senior scientists in public health
- Have skills and knowledge across all the domains of Public health and are focused on health at a population level
- Employed in various sectors including Local Authorities, Civil Service, NHS, Academia, VCSE sectors

Entry Routes and career progression in Public Health

Wider Public Health Workforce

[Foundation programme Y&H](#) - Open-entry flexible training to support all parts of the workforce in understanding and addressing health inequalities. (Includes Introduction to Public Health, Health Protection, Prevention and Life course approach, tackling health inequalities and wider determinants.

[Foundation programme Y&H \(Level 2\)](#) - Building on “Level 1” to support further learning around inequalities, and support those managing and leading teams

[Community Health and Wellbeing Worker Apprenticeship](#) – Focused on improving the health of local people and communities by preventing poor health and tackling inequalities. In the process of developing [Staff and Community Health and Wellbeing Apprenticeship](#) to enhance the role of Staff Wellbeing Champions.

[Royal Society of Public Health](#) (RSPH) – Resources, membership and a range of Level 2 and 3 courses

[NHS Population Health Portal](#) – A full range of e-learning, including ‘All our Health’ and ‘Making Every Contact Count training’.

[Population Health fellows](#) - Our national Population Health Fellowship for NHS healthcare staff in England aims to develop and grow a workforce of professionals who will incorporate population health into their everyday jobs.

Entry Routes and career progression in Public Health

Public Health Practitioner

[The Public Health Practitioner Level 6 \(L6 PHP\) Apprenticeship](#) is an integrated degree programme approved by the Institute of Apprenticeships and Technical Education – Providers include Salford Uni (on campus) and University of West of England (Online only)

[The Core PH Workforce Development Programme](#) - is a training programme available for Public Health workers in Yorkshire and the Humber. The training is fully funded and offered at no cost to attendees. These Faculty of Public Health (FPH) Masterclasses cover some of the core knowledge competencies for Public Health Practitioners (linked to UKPHR registration).

[UKPHR Support Programme for Practitioner Registration](#) - A programme of structured support designed to enable registration with the UK Public Health Register (UKPHR).

Which programme would work for me?

Apprenticeship – for those needing both public health experience and qualifications

Core PH Workforce Programme – for those who wish to develop further Public Health knowledge relating to core competencies

UKPHR Support Programme – For experienced Public Health Practitioners who wish to gain professional recognition

[Data and Analysis Apprenticeship L4](#) for those interested in starting a career in Public Health Knowledge and Intelligence

Entry Routes and career progression in Public Health

Public Health Specialist/Consultant

[Public Health specialty training programme](#) - The Yorkshire and Humber School of Public Health We are a dynamic, friendly, and supportive speciality school delivering high quality, comprehensive training for individuals wishing to become Consultants in Public Health.

[UKPHR's Specialist Registration by Portfolio Assessment \(SRbPA\)](#) registration is an alternative way of registering with UKPHR at Specialist level for those who have not undertaken the Standard Route of obtaining Specialist registration and are not on the GMC/GDC Public Health Specialty registers.

Further careers information – NHS Futures workspace

[Public Health Careers - FutureNHS
Collaboration Platform](#)

[Population Health Academy - Integrated
Care \(future.nhs.uk\)](#)



Public Health Careers

Public Health Careers - Welcome and Introduction

This Public Health Careers workspace has been developed in order to promote a better understanding of the diversity of public health careers and roles there are within 'public health'. There are a wide variety of Public Health roles and these can be found many different organisations and services that help promote and protect health.

We have aimed to pool together a range of resources from a wide variety of system partner, we hope that you will find this useful.

This workspace is currently still being development and should be viewed as a 'Beta' release for feedback and ongoing improvement.

Your views matter - Please leave your feedback



What is Public Health

A brief history of public health

Why work in Public Health

Public Health Careers

Public Health Workforce Development

Other Key Links and Resources

Support



Thank you

Chris Sharp, Regional Workforce Development Manager Y&H
chris.sharp@dhsc.gov.uk

&

Val Barker, Head of School Y&H, NHS England
val.barker1@nhs.net