

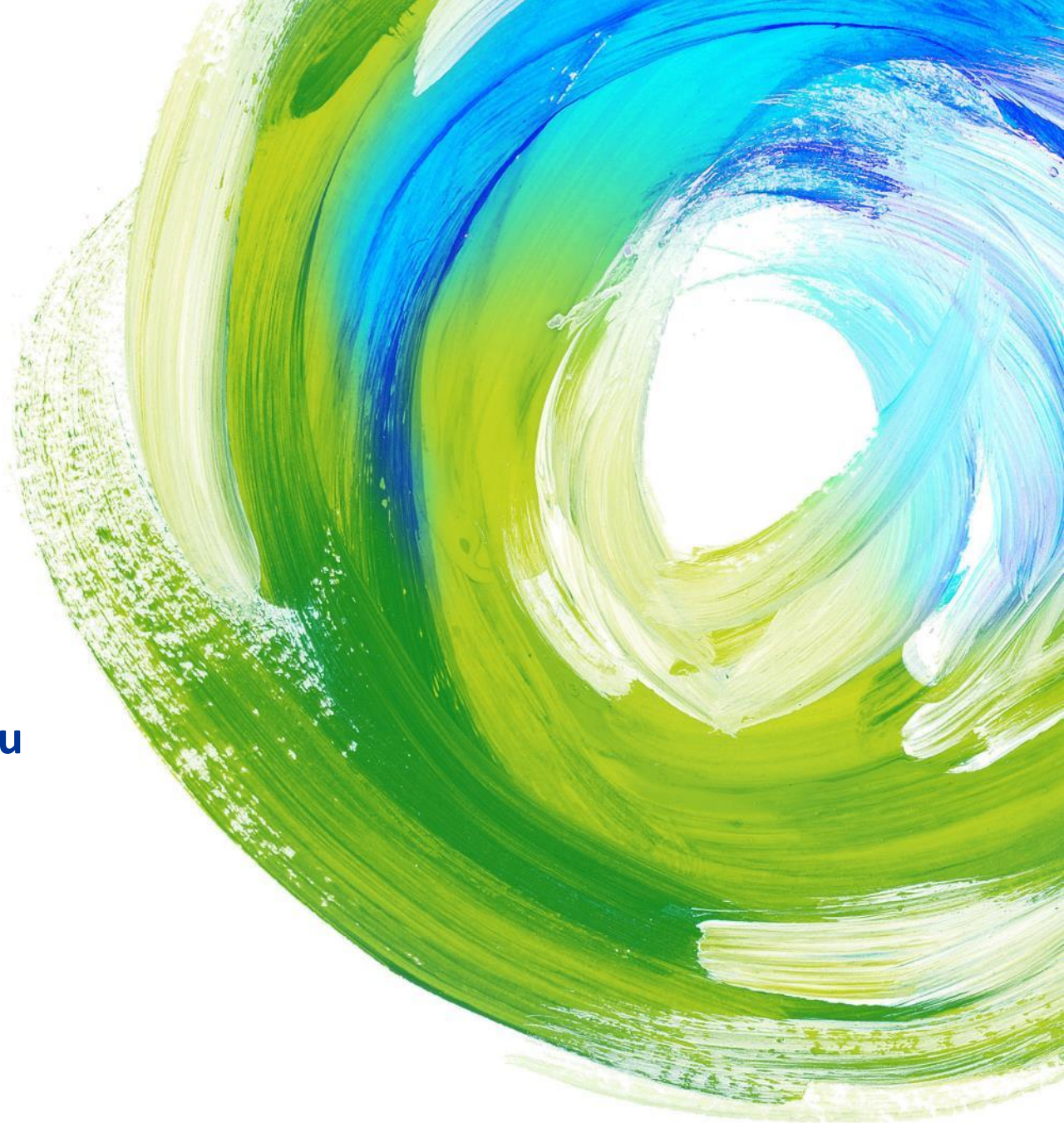


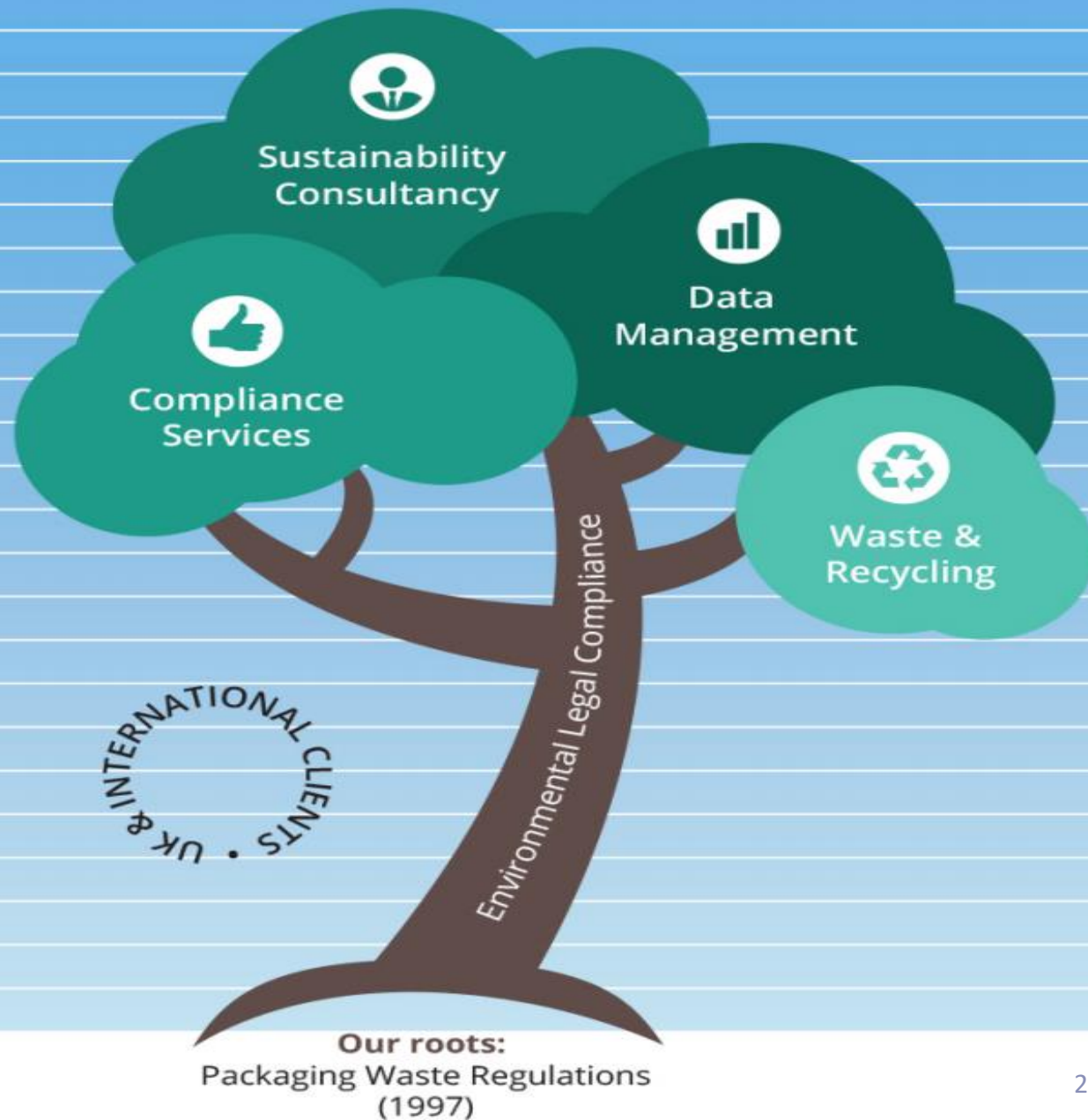
Treatment options for your plastic & why you should track it

Emily Hare

Valpak Limited

28 March 2019





- The Modern Slavery Act (2016)
- Waste Manager Portal (2015)
- ESOS (2014)
- TRACE - Supply Chain Mgmt System (2015)
- International Compliance (2011)
- Civil Sanctions (2011)
- CRC, RoHS & REACH (2010)
- Batteries Compliance (2009)
- Carbon Management (2008)
- WEEE Compliance (2007)
- Data Management (2004)
- Green Dot (2003)
- Sustainability Consultancy (2003)
- Recycling Services (2000)
- recycle-more.co.uk (2000)
- Packaging Compliance (1997)

What happens to your plastic waste?

Has it ended up here?...

...or here?



Durable

Lightweight

Mismanagement

Strong

Flexible

Clean

Plastic Recyclability: General Principles

Materials	<ul style="list-style-type: none">• Mono-materials• Mixed of same polymer• Mixed of different densities
Colour	<ul style="list-style-type: none">• Unpigmented• Avoid carbon black• Avoid direct printing
Residue	<ul style="list-style-type: none">• Aid emptying
Composites	<ul style="list-style-type: none">• Thin layers
Attachments	<ul style="list-style-type: none">• Readily separable• Avoid metal, paper labels not ideal• Sleeve labels cover <60% surface
Adhesives	<ul style="list-style-type: none">• Minimised, glued at only a few points• Hot melt alkali soluble best

Desirable

Attachments -
density $<1\text{g/cm}^3$ e.g.
PP, HDPE, PE

Barriers that flake off

Clear plasma
coatings

Clear, light tints

Label $<60\%$ coverage

Water soluble
adhesive

Undesirable

In combination with
PVC, EVA, PLA,
EVOH, metals, PS,
paper, glass

Opaque/tinted/ dark
colours

Direct printing

PET Guidelines

Desirable

Attachments in same colour as bottle
PE barriers
Natural colour
Label <60% coverage
Water soluble adhesive

Undesirable

In combination with PVC, PP, metal, PS, EVA, silicone, glass, paper
Direct printing

HDPE Guidelines

Desirable

Attachments -
density $>1\text{g/cm}^3$ eg.
PET

Unpigmented

Closures of same
colour

Label $<60\%$ coverage

Water soluble
adhesive

Undesirable

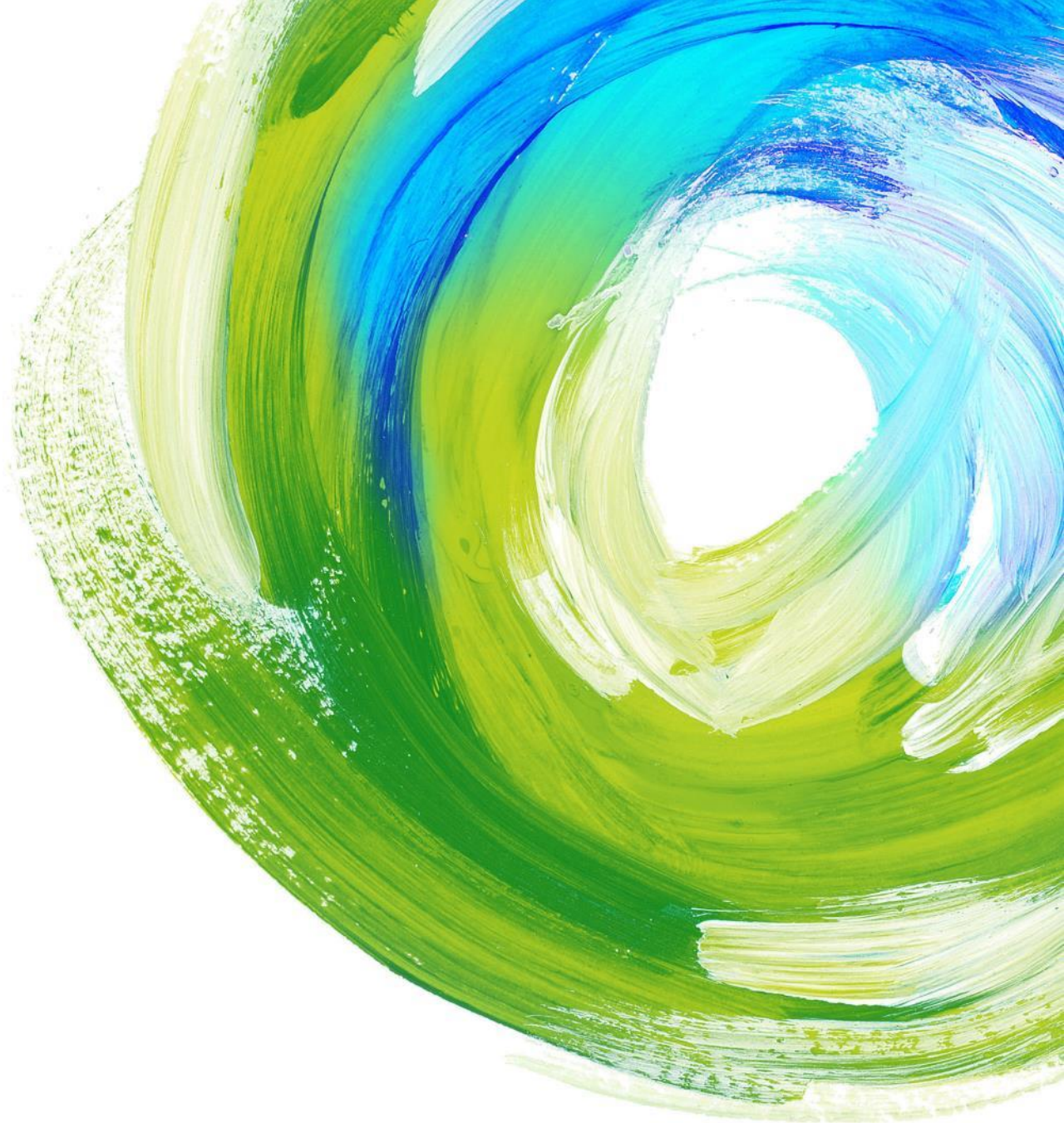
In combination with
HDPE, PVDC, PVC,
paper, PS, metals

Direct printing

PP Guidelines

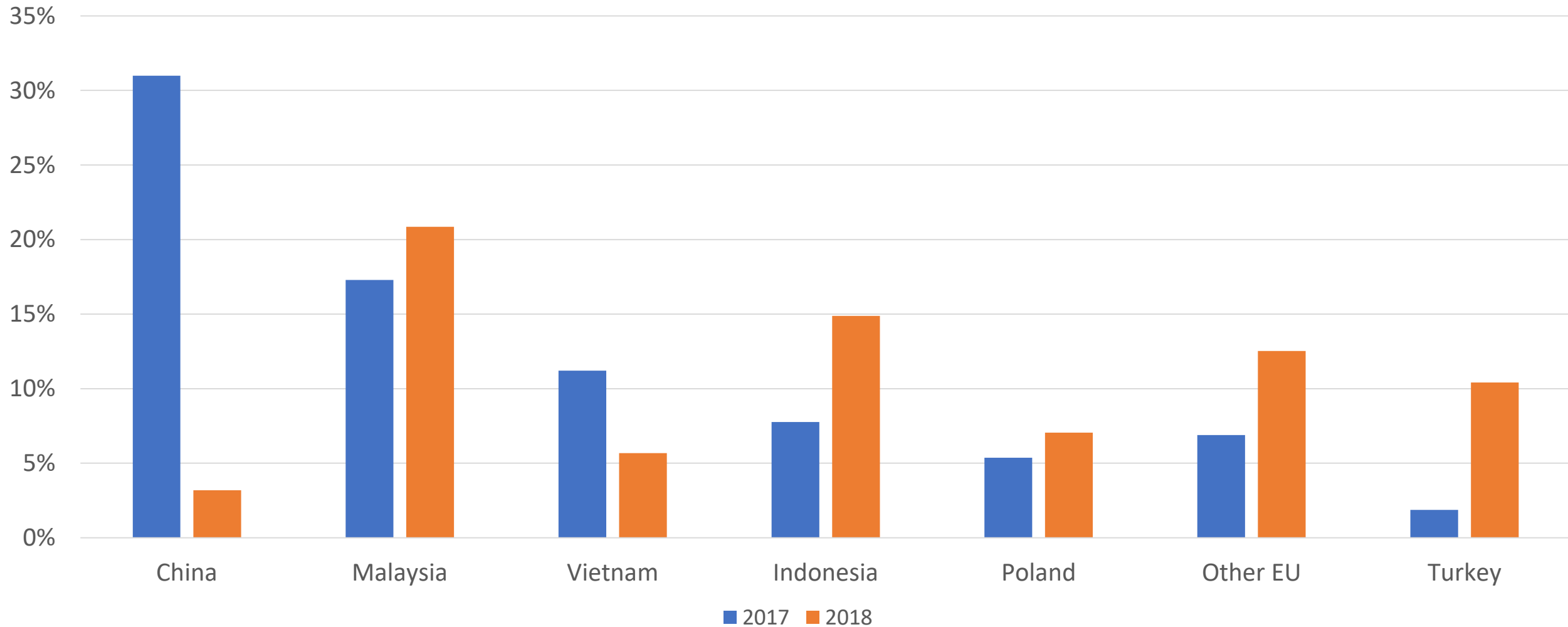


But why does this matter now?



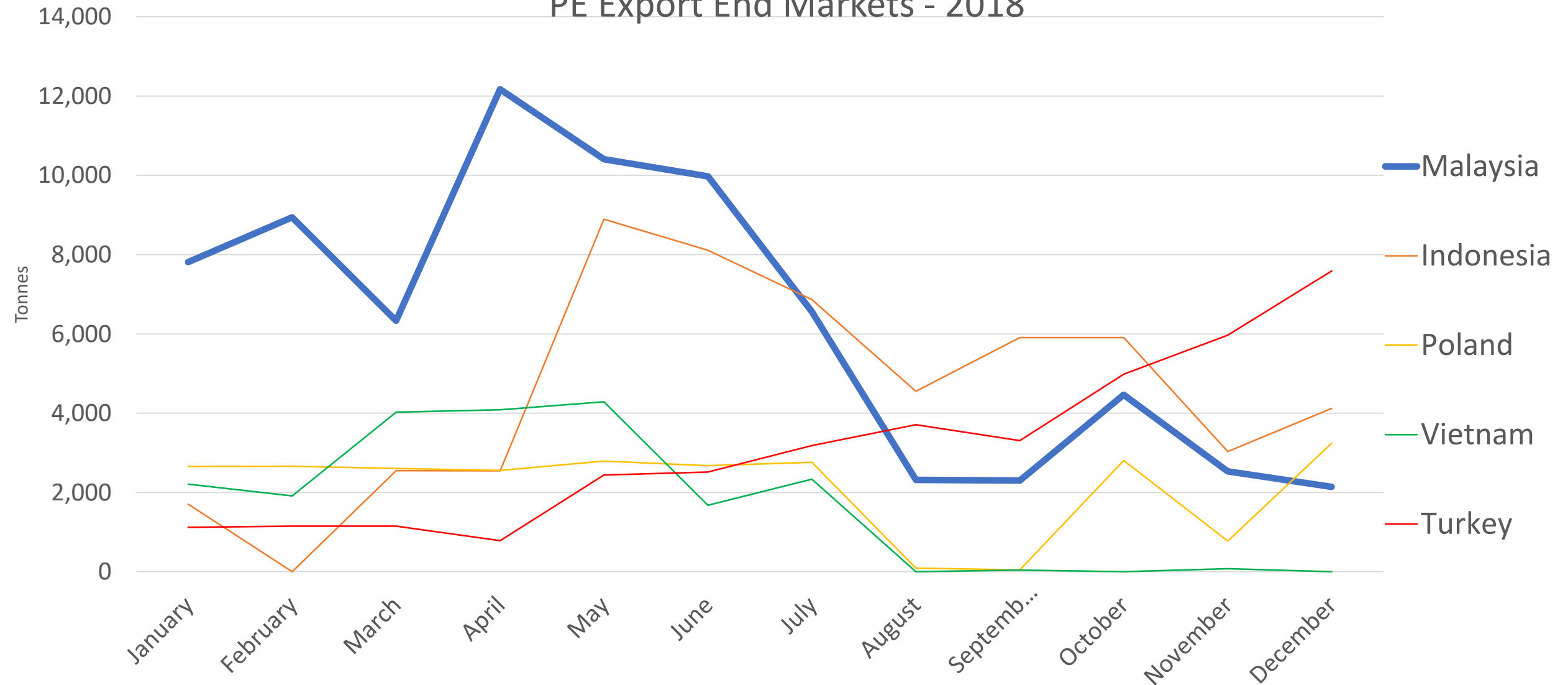
The story of two years

PE Export Destinations as % of Exports



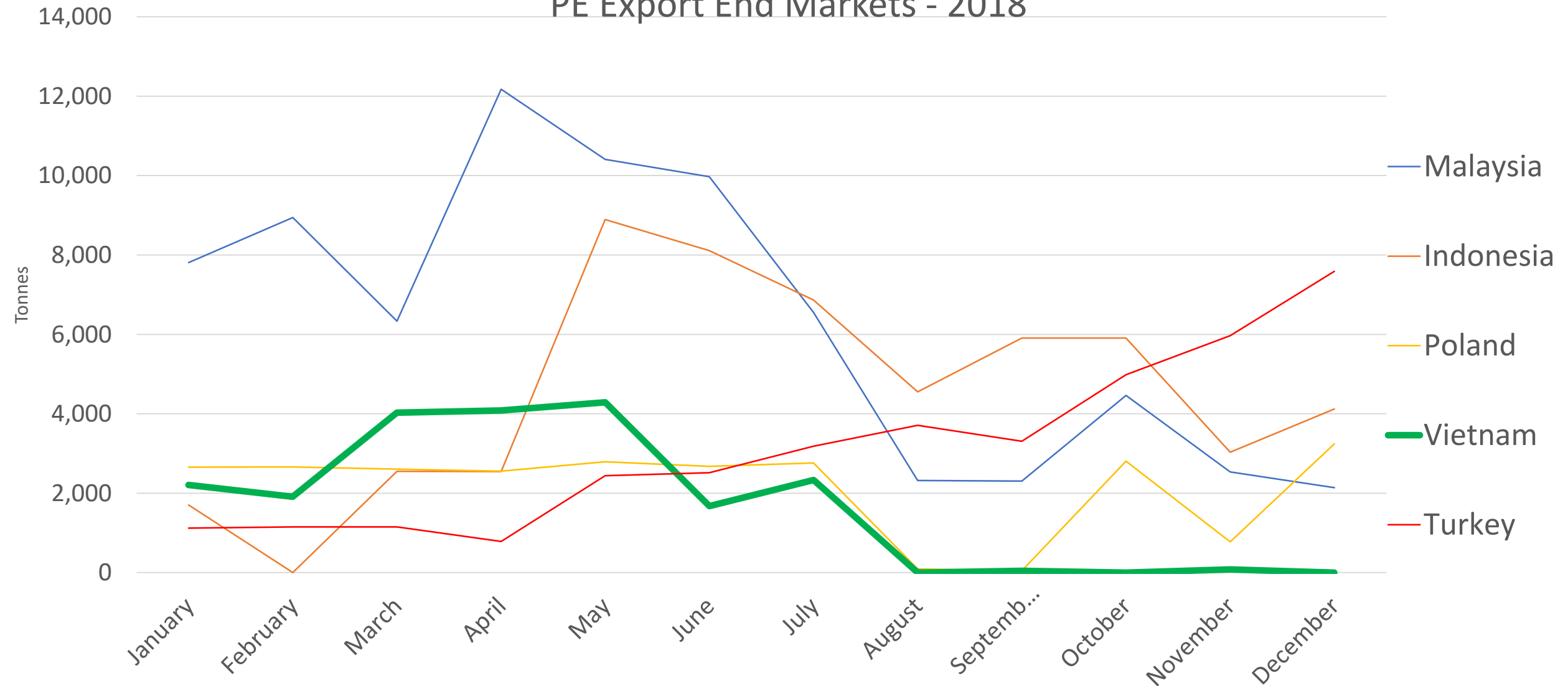
Export Markets

PE Export End Markets - 2018



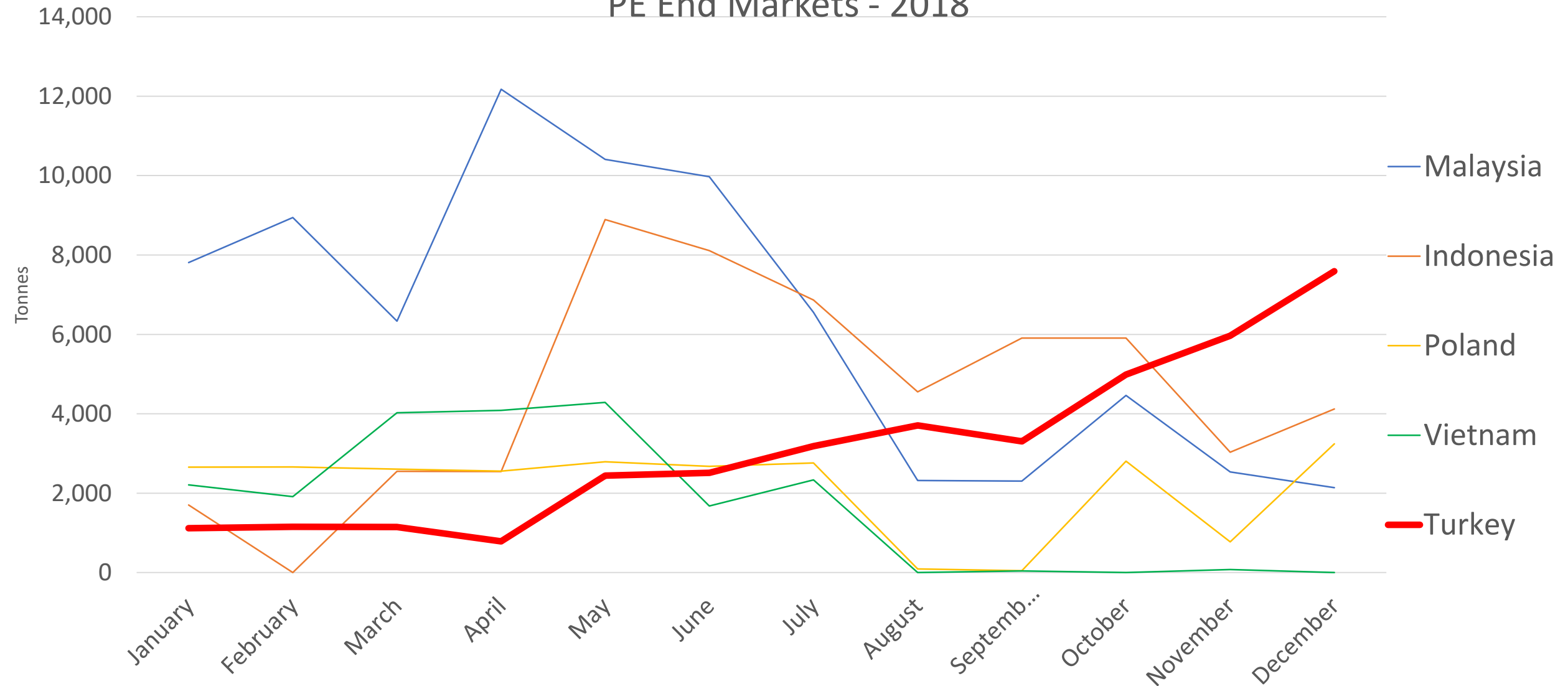
Export Markets

PE Export End Markets - 2018



Export Markets

PE End Markets - 2018





12 FEBRUARY 2019

Politicians target end to plastic waste exports

PACKAGING / PLASTICS

A cross party group of politicians have backed calls to phase out the export of plastic packaging waste for recycling by the end of the next decade, in a report launched today (12 February). The report from the Policy Connect ...



14 FEBRUARY 2019

Plastics export markets needed, says Recycling Association

PACKAGING / PLASTICS

The Recycling Association has countered calls for a ban on exports of plastic packaging for recycling saying that export markets are vital for the sector. The comments come in response to a call from a number of politicians ...

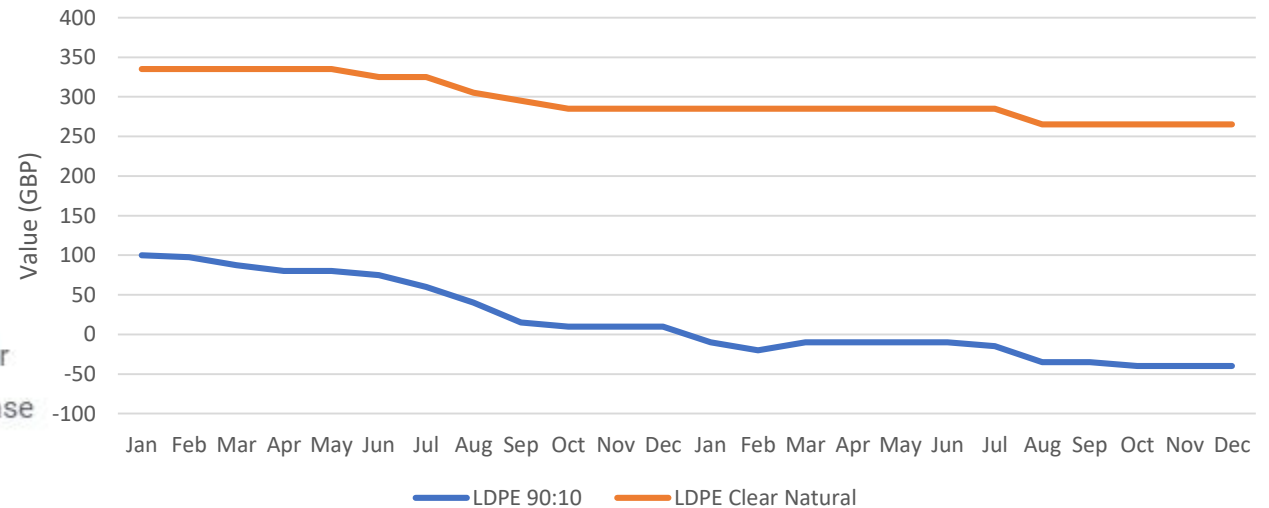


6 FEBRUARY 2019

Biffa gets green light for Durham PET recycling facility

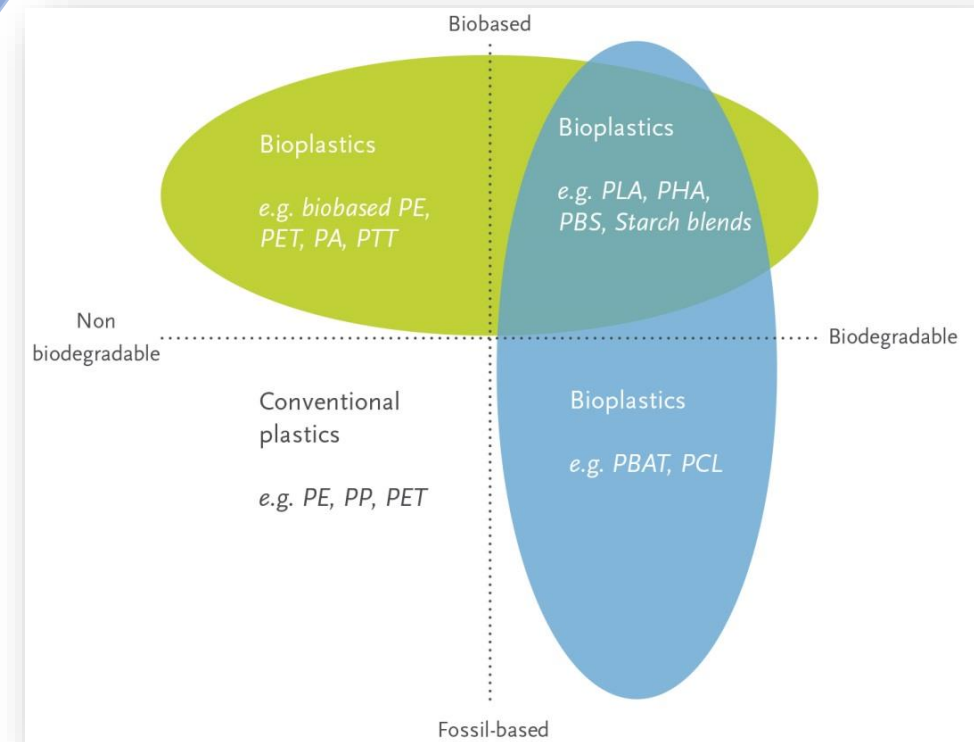
Biffa has been given the green light to develop a 37,000 tonnes-per-annum capacity PET plastic bottle reprocessing facility in Seaham, County Durham. The company was awarded planning consent for the development by Durham council ...

LDPE Prices



Bioplastics

- Bioplastic: made from polymers derived from plant-based sources and/or biodegradable
- Biodegradable: breaks down in a defined period of time
- Compostable: meets EN13432 (or comparable standard) to decompose in industrial composting conditions
- Currently **no** composting facilities are accepting bioplastics in the UK



Why you should track your waste



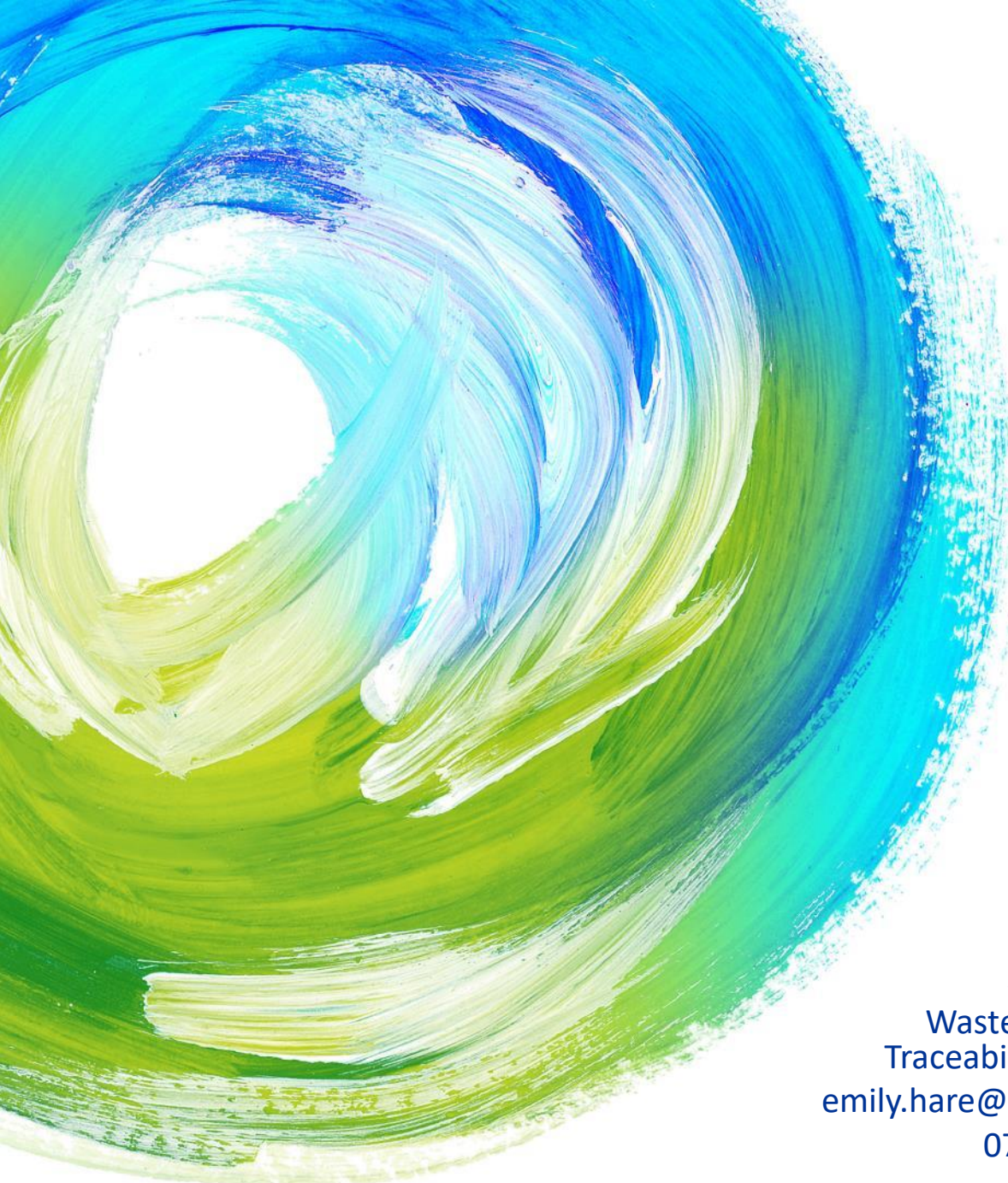
Summary

Considering recyclability in design is essential.

The end markets & the value of plastic waste is ever changing.

If looking at alternatives to plastic review the bigger picture.

To react quickly to these changes you need to be tracking your waste.



“When it comes to waste and recycling, there are many companies that promise the Earth, but Valpak Recycling actually delivers on those promises.”

Offset Print & Packaging Ltd

“Waste Tracker gives us complete visibility and control on our waste supply chain and the peace of mind that comes from exceeding waste compliance best practice.”

Miele Company Ltd

Emily Hare
Waste & Resource
Traceability Manager
emily.hare@Valpak.co.uk
07977 255240



**knowledge
beyond
compliance**