

Leeds Alcohol Licensing Data Matrix

**Rachel Dukes, Advanced Health Improvement Specialist-
Drugs and Alcohol**

Leeds City Council



Introduction / what I'll cover

- The challenge of how to get PH input into the licensing process
- The reasons why and how the Leeds Alcohol Licensing Data Matrix was developed
- Successes we've had to date
- Applicability of the matrix to other topics – our latest community hepatology work



The challenge

*“I would like the number of shops selling alcohol for extended hours to be reduced because I'm sick of the **antisocial behaviour** my family and I are faced with... including drunkards **arguing** and **shouting around the clock**, being **frightened** to nip out for a pint of milk, public **urinating/vomiting** and beer cans **littering** the streets...”*

(quote from a local resident)

*“When I was drinking I felt ‘included’ in this **world of accessibility** – it validated my appetite... Alcohol dependency has to be the **ugliest** and **most harmful** ‘condition’ in our modern age and yet we continue to feed it. We pamper it and we celebrate it.”*

(quote from an ex-drinker)



4 Alcohol Licensing Objectives (Licensing Act, 2003) and.....the challenge

1. Prevention of crime and disorder
2. Public safety
3. Prevention of public nuisance
4. Protection of children from harm

Anyone spot anything missing??



The challenge continued...

- Hospital admissions for alcohol-related conditions – narrow (2017/18)
 - Leeds: 646; Y&H: 697; England: 632
- Hospital admissions for alcohol-specific conditions (2017/18)
 - Leeds: 680; Y&H: 607; England: 570
- Hospital admission rate for alcohol liver disease -persons (2016/17)
 - Leeds: 43.2; Y&H 41.8; England: 38.5
- Alcohol-related mortality (2017)
 - Leeds: 51.9; Y&H: 50.0; England: 46.2
- Alcohol-specific mortality (2017)
 - Leeds: 13.8; Y&H: 12.4; England: 10.6



What do we have in Leeds

- **3rd largest licensing authority in the country**
- Strong partnership between PH, Licensing, WYP Licensing, local NTE
- Representation on LEG
- Offer free 2 hour training for the NTE on alcohol and drugs, now including – “how to have the conversation...”
- Shared aims:
 1. Increasing / improving the representations to the Alcohol Licensing Committee panel
 2. Reduce the availability of alcohol
 3. Reduce rates of alcohol related crime and disorder
 4. Reduce incidence of alcohol specific and related hospital admissions

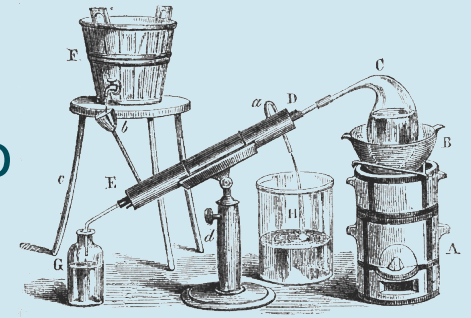


How matrix was developed



PHE: Alcohol licensing: data for public health teams

88 datasets or sources of information available to examine the impact of alcohol licensing



Alcohol specific admissions

Alcohol attributable admissions

Hospital stays

Binge drinking

Claimants of benefit

Mortality from

Number of adults

alcohol only /

Number of adults

Number of people

English Indices

PHE Local Health

Location of Domestic

Paramedic call

Road Casualties

Years of life lost

Admission episodes

Admission episodes

Admission episodes

Admission episodes

Admission episodes

Admission episodes

Admission episodes

Admission episodes

Admission episodes

Admission episodes

Admission episodes

Admission episodes

Admission episodes

Admission episodes

Admission episodes

Admission episodes

Admission episodes

Admission episodes

Admission episodes

Admission episodes

Admission episodes

Admission episodes

Admission episodes

Alcohol related recorded crime

Details of local Violence offences

Details of Drunk and Disorderly

Details of Domestic Violence

Number of Sec 27 - drink

Drink Driving Offences

Criminal Justice costs

Social Services costs

Health and Workforce

Number of people in treatment

Location of residential

Alcohol Liaison Team

Recorded numbers of

Recorded numbers of

Data from Multi-Agency

Numbers and times of

Fire and Rescue Service

Fire and rescue service

Paramedic call out time

Records re: counterfeit

Under aged sales/ASB

Proportion in treatment, and proportion of new presentation to treatment, who live with children under the age of 18 by alcohol/ alcohol and non-opiate treatment

Number of episodes for children in treatment with alcohol/ alcohol and non-opiate treatment

Admission episodes for alcoholic liver disease condition (Broad)

Incidence rate of alcohol-related cancer

Alcohol related road traffic accidents

Number in treatment at specialist alcohol misuse services

Successful completion of treatment for alcohol

Proportion waiting more than 3 weeks for alcohol treatment

Volume of pure alcohol sold through the off-trader: all alcohol

Volume of pure alcohol sold through the off-trade: beer sales

Volume of pure alcohol sold through the off-trade: wine sales

Volume of pure alcohol sold through the off-trade: spirit sales

Number of premises licensed to sell alcohol per square kilometre

Percentage of adults who abstain from drinking alcohol

Percentage of adults binge drinking on heaviest drinking day

Percentage of adults drinking over 14 units of alcohol a week

LEEDS ALCOHOL LICENSING DATA MATRIX



Mixed by:

Principal Licencing Officer

Communities & Environment
Section Head

Adv Health Improvement
Specialist, PH

Principal Legal Officer,
Resources & Housing

Senior Information Analyst, PH
Intelligence

MSOA

Alcohol Specific admission all ages - any hospital

Alcohol Related admission all ages - any hospital

Looked After Children

Young people Not in Education Employment or Training (NEET)

Youth offences

Alcohol Licensing - Off licensed premises density

LSOA

Deprivation score

% DID NOT achieve grade 9-5 in Eng and Maths Leeds schools

Alcohol Licensing - On licensed premises density

Population 16 and under

Audit-C scoring >7 more - increasing risk (GP recorded)

Alcohol related anti-social behaviour

Alcohol flagged Total Crime - Excluding violent crime

Alcohol flagged Violent Crime

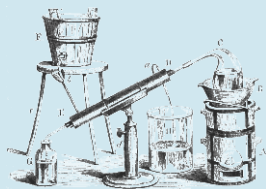
Drunk and disorderly Or Over Prescribed Limit

Clients who use alcohol services

Licensing risk scores



Public Health
England



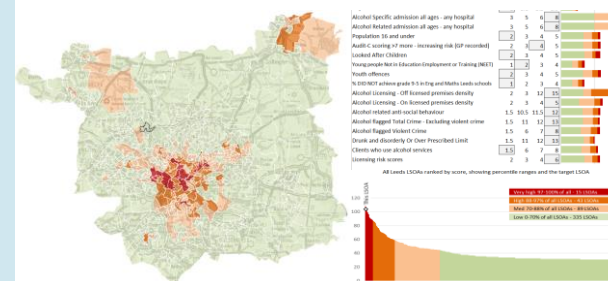
Testing and balancing



LOCAL DATA FOR LOCAL PEOPLE



Alcohol Data Licensing Matrix



The Finished Article.....



2. It is original, sophisticated & dynamic

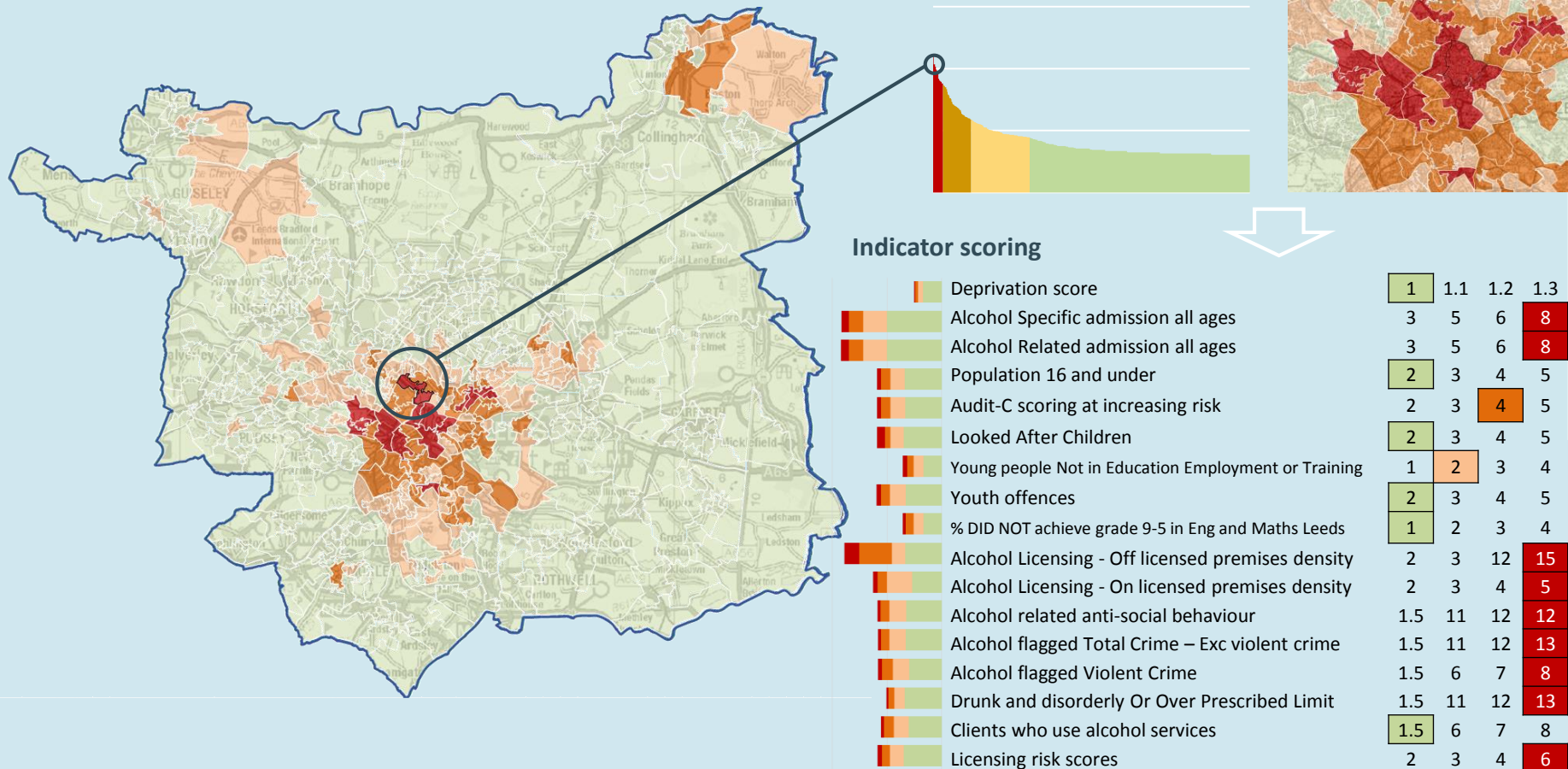
Multiple data sources

Postcode

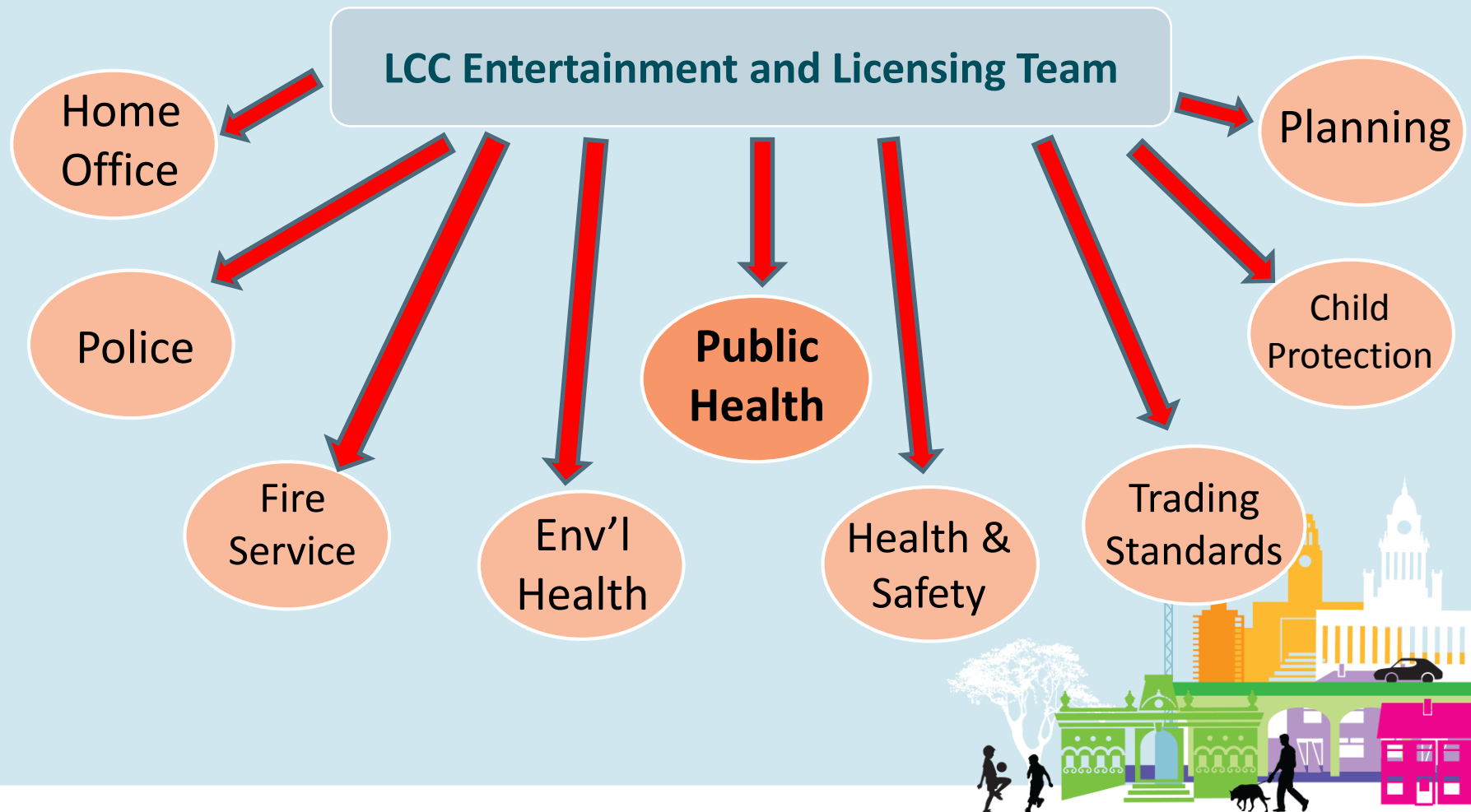
LSOA ranks 10th

Very high

Map and chart highlighting this LSOA in Leeds



Distribution of alcohol licence application requests to Responsible Authorities



Successes to date, benefits & future applications

- Early success
 - 2 x licences refused
 - 1 x approved with conditions;
 - 1 x withdrawn
- Complex/ intelligent/ specific – but, easy to use
 - Excel – no specialist software/ knowledge
 - Developed in-house – minimal cost
 - Updated annually – dynamic and relevant
 - Future online version
- Other local authorities could develop their own version
- Other areas of public health could develop their own version
 - Gambling (betting shops/ arcades)
 - Healthy eating (hot food outlets, BMI, NCMP)
 - Planning etc.
- Interest from a number of other local authorities, Public Health England and the Home Office



Controversial Harehills off-licence banned from selling 24-hour alcohol

“A licensing officer said that, out of 482 areas in Leeds, the area of Harehills in which Krakus is located has the 14th highest instance of alcohol-flagged violent crime and the 19th highest instances of alcohol-related hospital admissions. Most of the areas higher in the lists are in Leeds city centre, and have much higher numbers of drinkers.” (15 January, 2019)



This postcode is within the LSOA ranking 10th highest of 482 in Leeds: Leeds Alcohol Licensing Data Matrix

The next phase of the Leeds Alcohol Data Matrix – branching into hepatology

- Long standing barrier to tackling Alcohol-related Liver Disease (ArLD) = identifying early disease
- LTHT currently running community based testing for ArLD through use of opportunistic blood tests and FibroScans in primary care settings
- We are using the footprint of the matrix and its indicators to layer additional NHS data to help identify LSOAs /and new GP practices within which to locate the service
- Leeds has been successful in securing a PHE capital grant to purchase 3 new FibroScan machines, so with use of matrix - we can help identify LSOAs/practices where there is high levels of alcohol related harm



Thank you, any questions?

Where you can find out more: PHE Khub:

<https://khub.net/group/pheyorkshireandhumber>

- using alcohol data in licensing forum section

