

Support for people requiring TB treatment with no recourse to public funds (NRPF)

Ben Holden, Public Health Registrar

Rebecca Clarke, Public Health Principal



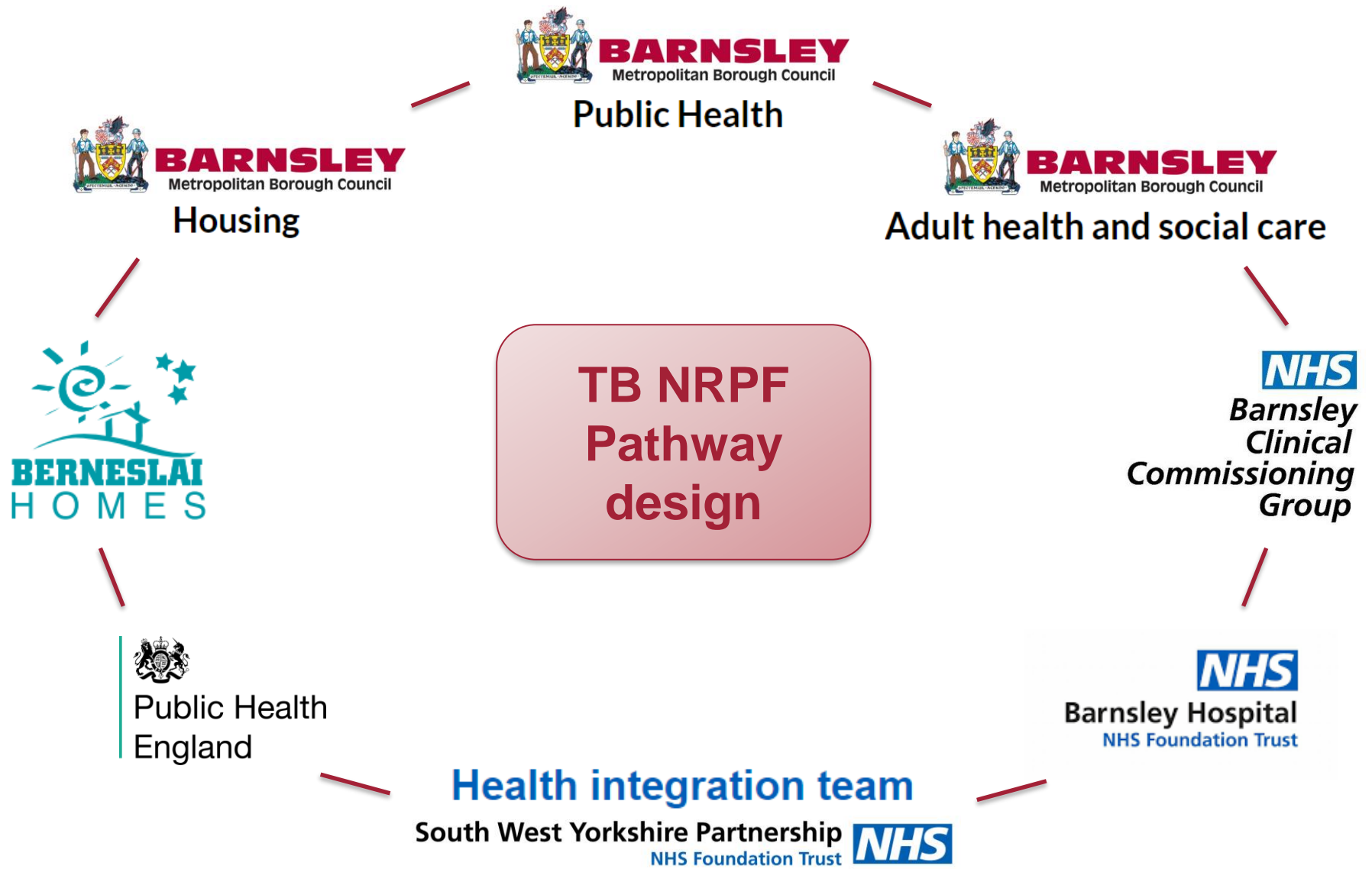
BARNSELY
Metropolitan Borough Council

Our goal

To establish a Barnsley pathway to provide support and accommodation for patients with TB that have no recourse to public funds (NRPF).

How?

By working closely with local partners we will improve patient outcomes, and reduce the resource impact for cases with complex social and accommodation needs.



Who was involved?

Health Integration Team (HIT)

Integrate overseas arrivals into mainstream health services and address inequalities in health and wellbeing.

Responsible for:

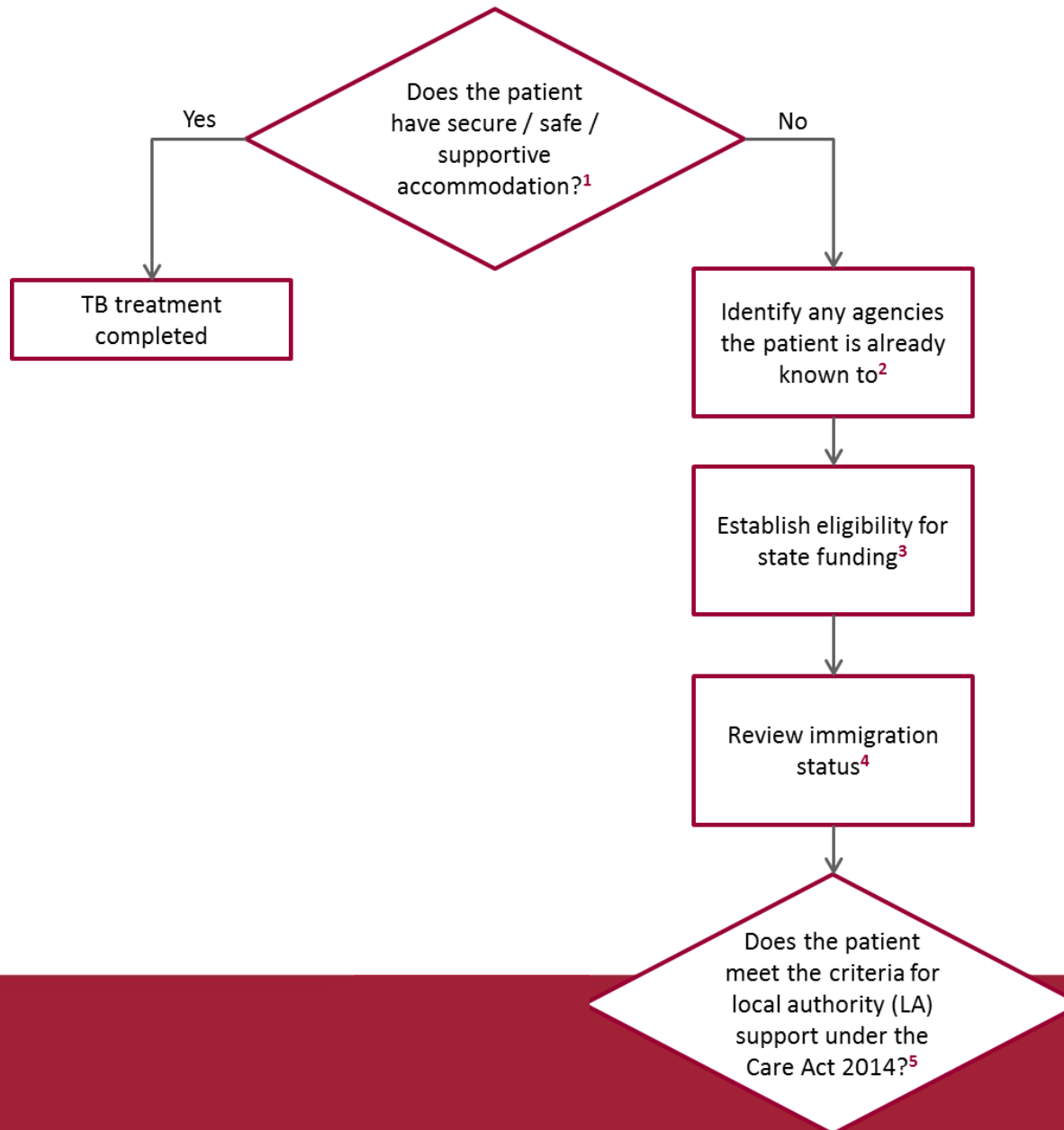
- newly arrived asylum seekers residing in Barnsley;
- asylum seekers under the age of 18 without family;
- refugees, migrant workers and immigrants within the local community.

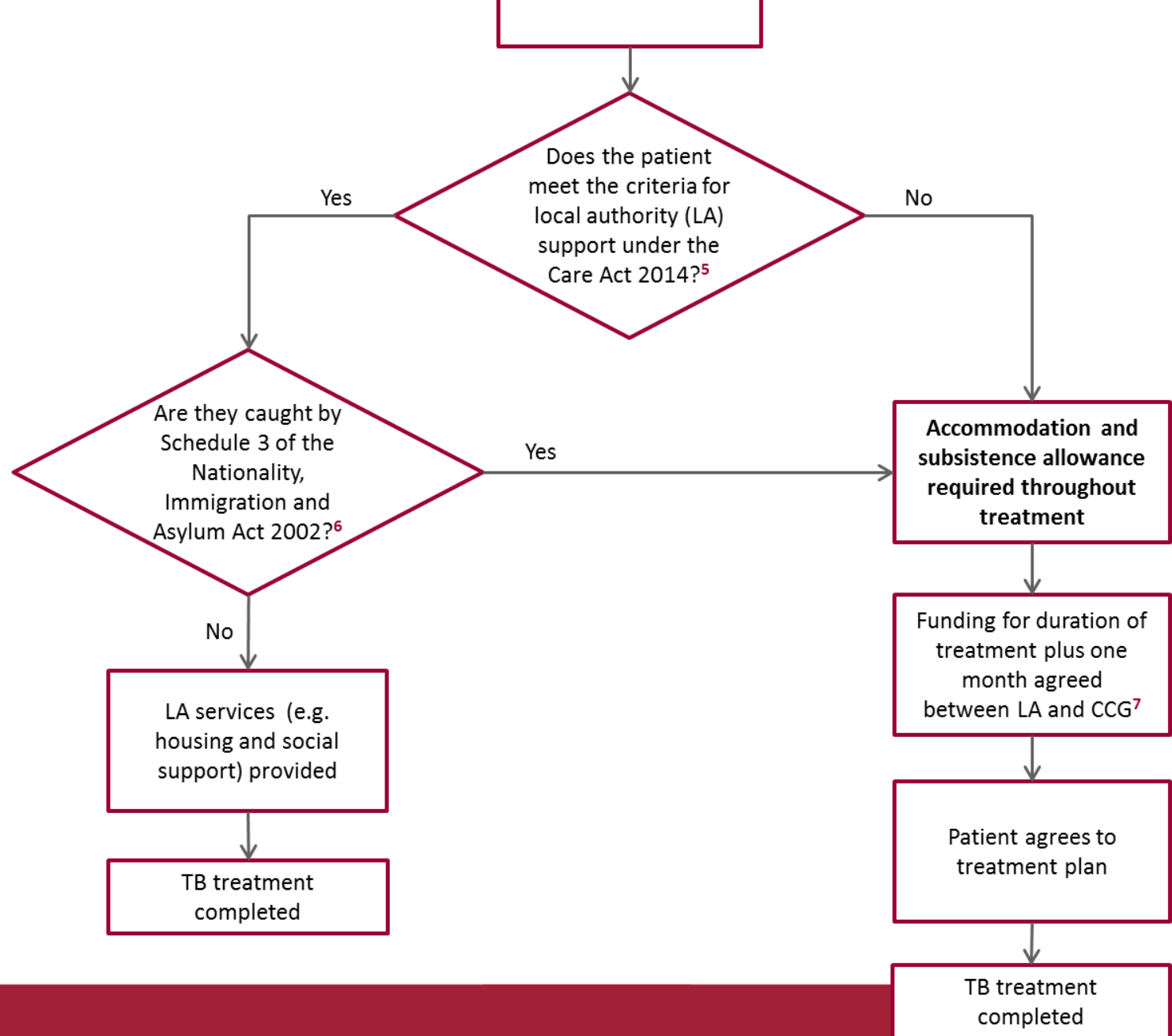
Community TB service is also run by the same specialist nurses (also TB nurses) in Barnsley.



BARNSLEY
Metropolitan Borough Council

Patient diagnosed with TB and undergoing inpatient hospital treatment.
Begin discharge planning as early as possible.





Lessons learned from this work

- ☐ Do not assume that all partners understand the importance of the issue prior to bringing groups together.
- ☐ Honest and open conversations with partners about resource allocation lead to successful collaboration.
- ☐ Identify the services already available to support particular patient groups – no need to reinvent the wheel.
- ☐ Test the pathway before final sign-off.

