

Yorkshire and Humber Applied Research Collaboration

John Wright

Bradford Institute for Health Research

Suzanne Mason

University of Sheffield

Michael McCooe

Yorkshire and Humber Improvement Academy

Kate Pickett

University of York

Rosie McEachan

Bradford Institute for Health Research

Simon Gilbody

University of York

Scott Weich

University of Sheffield

Tracey Young

University of Sheffield

Laura Bojke

University of York

Rebecca Lawton

University of Leeds

Jo Cooke

Sheffield Teaching Hospitals

An evolution of applied health research

Four high quality themes

- Early life and prevention
- Older people and frailty
- Mental and physical multimorbidity
- Urgent and emergency care

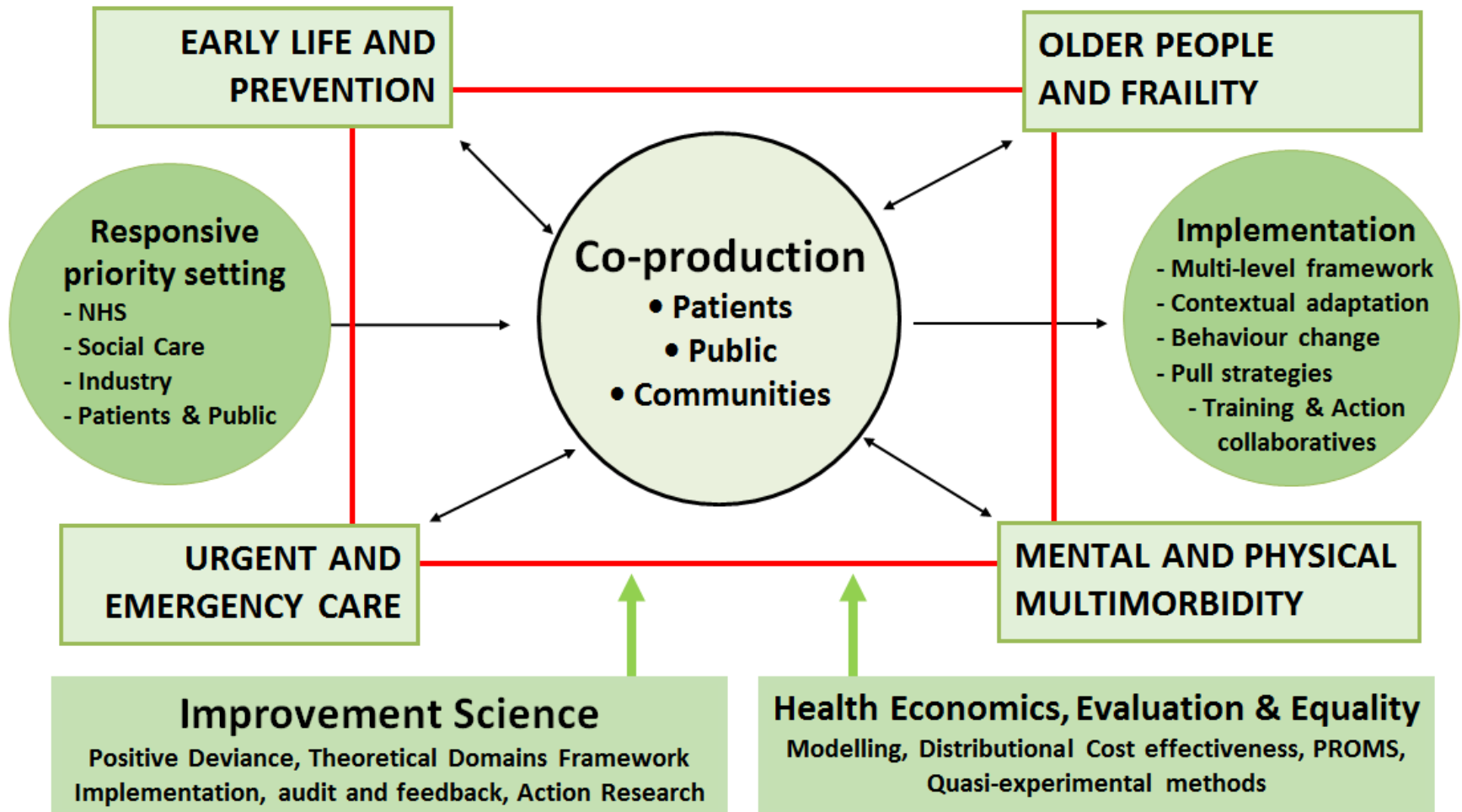
Two cross cutting bonds

- Improvement science
- Health economics, evaluation and equality





Yorkshire and Humber ARC Framework



Governance Structure for Yorkshire and Humber Applied Research Collaboration (YHARC)

- Partners**
- NHS
 - CCGs
 - Local Authority
 - PPIEP
 - Universities
 - Industry
 - AHSN
 - Clinical Research Network

- International Advisory Group**
- P Bossuyt, Public Health & Clinical Methods, University of Amsterdam
 - S Denegri, NIHR Director for Patients, Carers and the Public
 - S Galea, Boston University School of Public Health
 - G Labovitz, Management and organizational behavior, Boston University
 - J Mackenbach, Department of Public Health, Erasmus University
 - M McCarthy, Health Policy and Emergency Medicine, Institute of Public Health, G. Washington University
 - T Sheldon, Health Services Research and Policy, York University
 - R Tambllyn, Director Clinical and Health Informatics, McGill University
 - J Tooke, formerly: Vice Provost (Health) UCL / Academic Director of UCL Partners and President of the [Academy of Medical Sciences](#)

YHARC Strategic Board

Director

Executive Board
 Theme leads
 Finance manager
 Implementation lead
 Capacity lead

Programme Management Team

Themes

Early Life and Prevention

Older People with Frailty

Mental and Physical Multimorbidity

Urgent and Emergency Care

Improvement Science

Health Economics, Evaluation and Equality

- CORE Team Functions**
- Programme management
 - Reporting (including finance)
 - Communication
 - Coordination of PPIEP

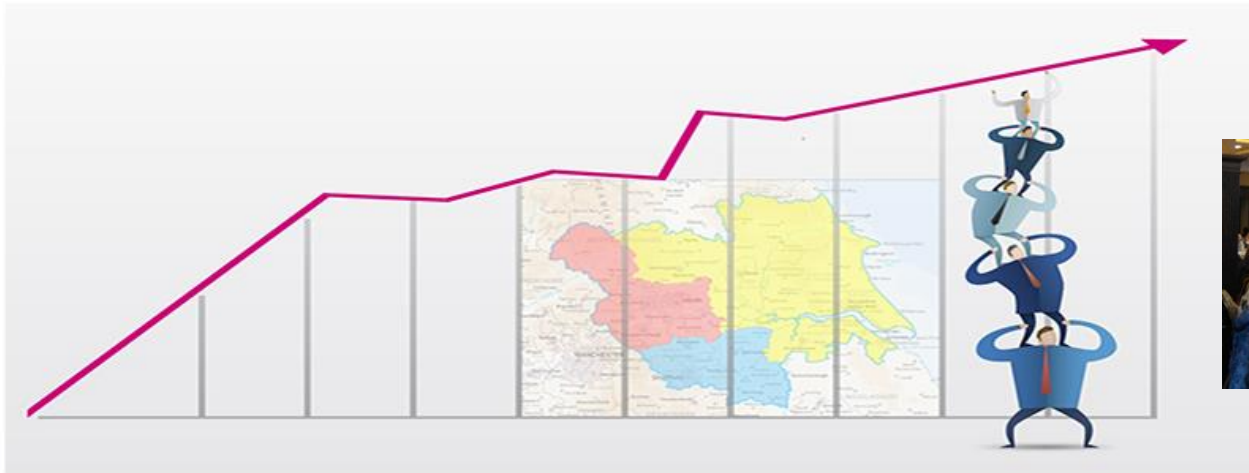
Theme Advisory Groups

Patient, Public Involvement, Engagement and Participation (PPIEP)

Approach

- Interdisciplinary
- Strong public and community involvement
- Systems approach
- Harnessing cohorts and data linkage
- Capacity building
- Focus on inequalities
- Impact





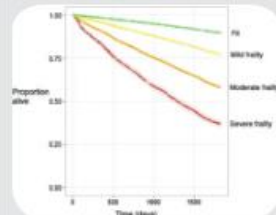
[Home](#) » [Our Impact](#) » [Impact Case Studies](#)

Impact Case Studies



Timed Action Plans for Patients (TAPPs)

Since work started developing and testing TAPPs with Ward 9 at Hull Royal Infirmary, there has been a reduction in length of stay from a baseline of 11.7 to 7.2 (as of 04/09/2016), saving an



Electronic Frailty Index (eFI) Tool

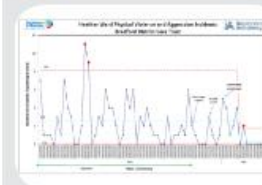
The electronic Frailty Index (eFI) is a tool which allows GPs and primary care clinicians to proactively identify and severity grade people with frailty. It enables the calculation of a frailty score that can be



Yorkshire Huddles

contributing at scale to reducing patient harm and increasing teamworking

>>>



Using Safety Huddles in mental health

Focusing on reducing Violent and Aggressive incidents, an adult acute ward at Bradford District Care Trust have been using safety huddles.

>>>



Healthy Ageing Collaborative

A Healthy Ageing Collaborative (HAC) has been established to support the development of new, evidence-based models of care for older people with frailty.

>>>

Thank you

