

# Yorkshire and the Humber Public Health Practitioner Workforce Development Programme



## Welcome and Housekeeping

**The Webinar will begin shortly.**

- ❖ *This session will be recorded; attendee mics and cameras will be disabled throughout the webinar.*
- ❖ *Please place any questions in the Q&A. They will be gathered and answered during each Q&A section.*
- ❖ *We will circulate a FAQ document after this webinar.*

*Enjoy the session!*





England

# UKPHR Information Session: Registering as a UKPHR Practitioner

Alix Sheppard UKPHR PR0322

**Health  
Talks**

Training &  
Consultancy

# Session aims

- Understand the role of UKPHR and registration Vs membership
- Planning your career- using frameworks
- Learn about the process of registration
- Explore the UKPHR standards for registration & how to demonstrate you meet them in a portfolio of your evidence
- Understand the next steps to take to apply to join the scheme



# Supporting Documents

- [UKPHR Guidance document](#) – the “Rules” and the “Answers”

You will need a hard copy of this as it is great to be able to make notes on this document as we go through the sessions.



Guidance for  
Applicants, Assessors and Verifiers  
Incorporating information previously in Supporting Information

*Public Health Practitioner Registration*

*March 2025*

# UKPHR

To protect the public and promote public confidence in public health practice.

UKPHR sets the standards for admission to the register and remaining on the register.

UKPHR publishes the register and deals with registered professionals who fail to meet the necessary standards.

Registration is a **public statement** that you, as members of a professional group, agree to meet and maintain standards of good practice appropriate to the work that you do.

## Categories of registration

1. [Public Health Specialist](#)
2. [Specialty Registrar](#)
3. Public Health Practitioner by portfolio assessment
4. [Public Health Practitioner by Apprenticeship](#)



# Benefits

## For Applicants

**Recognition** of one's competence by others, including employers.

**Self-confidence** about one's own abilities.

Independent **validation** of competence in public health practice, which can be shared with line managers, employers and commissioners of public health services

## For employers

**Easy to check** if practitioner is on register - and know where to take a query or complaint.

Help satisfy recruitment **due diligence**, as competence is assured if registered.

**System in place to support practitioners and** ensure competence is maintained through, for example, a formal CPD requirement.

Since Covid-19, employers report having more confidence in registered practitioners and are able to redeploy them more easily in response to the changing needs of public health

*It has given me the confidence that I do have the knowledge and skills for public health. This was particularly important to me because I came from another area of work entirely, so I have found it very affirming.*

*In a nutshell, it evidences that we understand and are able to apply the 'nuts and bolts' of public health.*

# Membership bodies

There are two main organisations which offer memberships:

RSPH <https://www.rsph.org.uk/>

FPH <https://www.fph.org.uk/about-fph/>

Membership is not the same as professional registration and the two should not be confused.

You may however be both a registrant with a professional body AND a member of another.

FPH offers a CPD programme which many people find useful  
<https://www.fph.org.uk/professional-development/cpd/>



**FACULTY OF  
PUBLIC HEALTH**



Chartered  
Institute of  
Environmental  
Health

# Frameworks and levels

There are a number of frameworks for career planning and development

The UKPHR Standards themselves can be used as a framework to plan your CPD as they cover the key basic principles of public health practice.

Using a framework will help you to plan your career, identify areas for development and identify your areas of interest as you progress in public health.

Embedding this in your appraisal and professional development plan (PDP) will help you to engage with your employer to improve your practice.

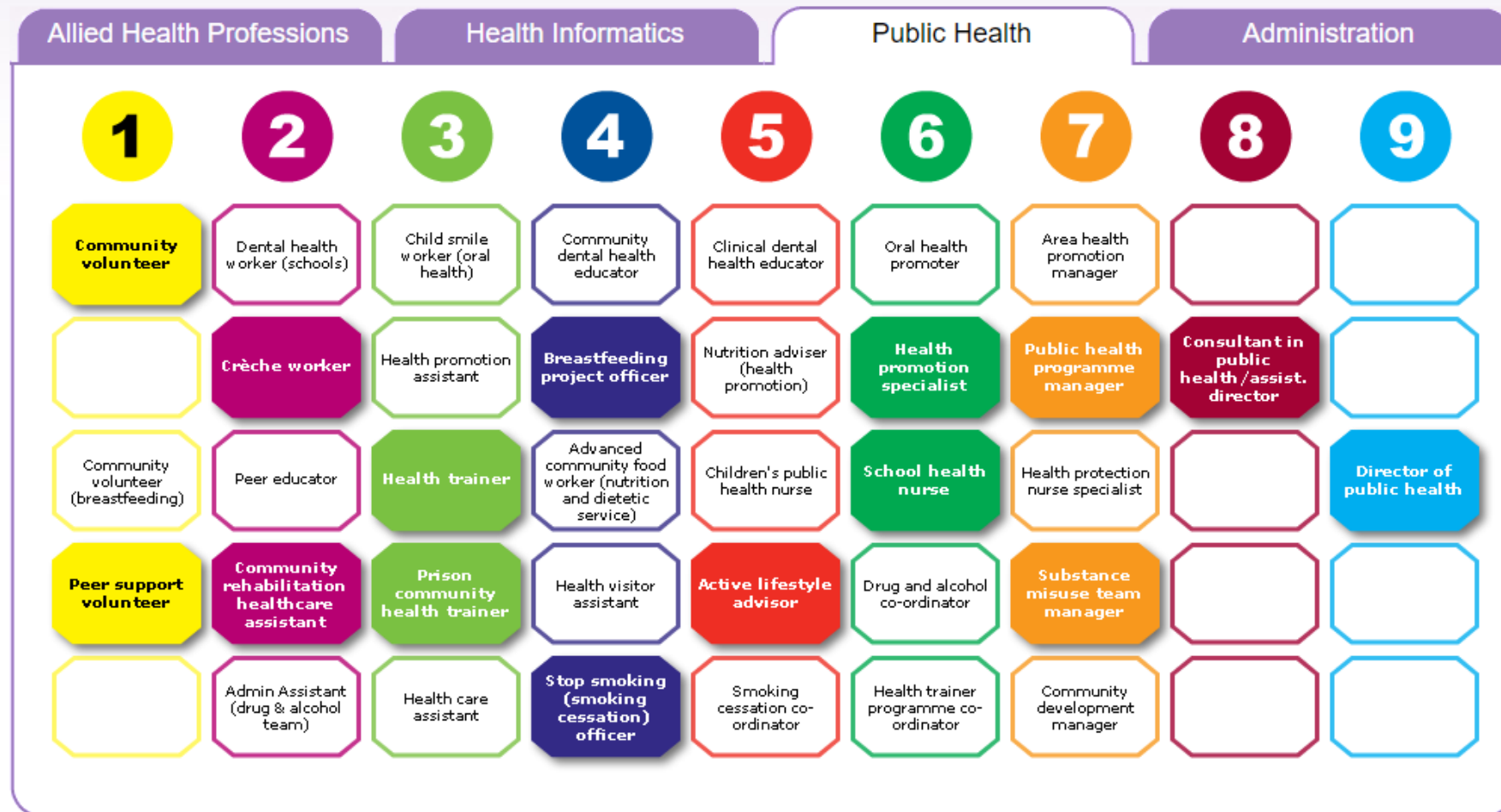
[PHSKF](#)



The term “practitioner” in the context of UKPHR registration means people working at levels 5,6 and 7

The term “**autonomous practice**” is key

You will be expected to show you have been working at this level for at least 2 years



# Practitioners- often misunderstood

- The term 'public health practitioner' is designed to describe a level of practice, not a specific job role or type of job.
- **Autonomous practice**, contributing to policy and programme development. See Guidance page 42
- At least 2 years+ of practice at AFC Band 5 and above, Skills for Health levels 5-8.
- A lot of misconception about "levels" 5 is the **minimum** at which an individual would have the breadth and depth of experience
- Knowledge level **broadly** equivalent to a bachelor degree in key PH skills, not topic-specific. Mandatory training accepted.

Practitioner roles are varied and at many levels.

Job titles are not reflective of level in most cases.

Level of qualifications also vary widely.

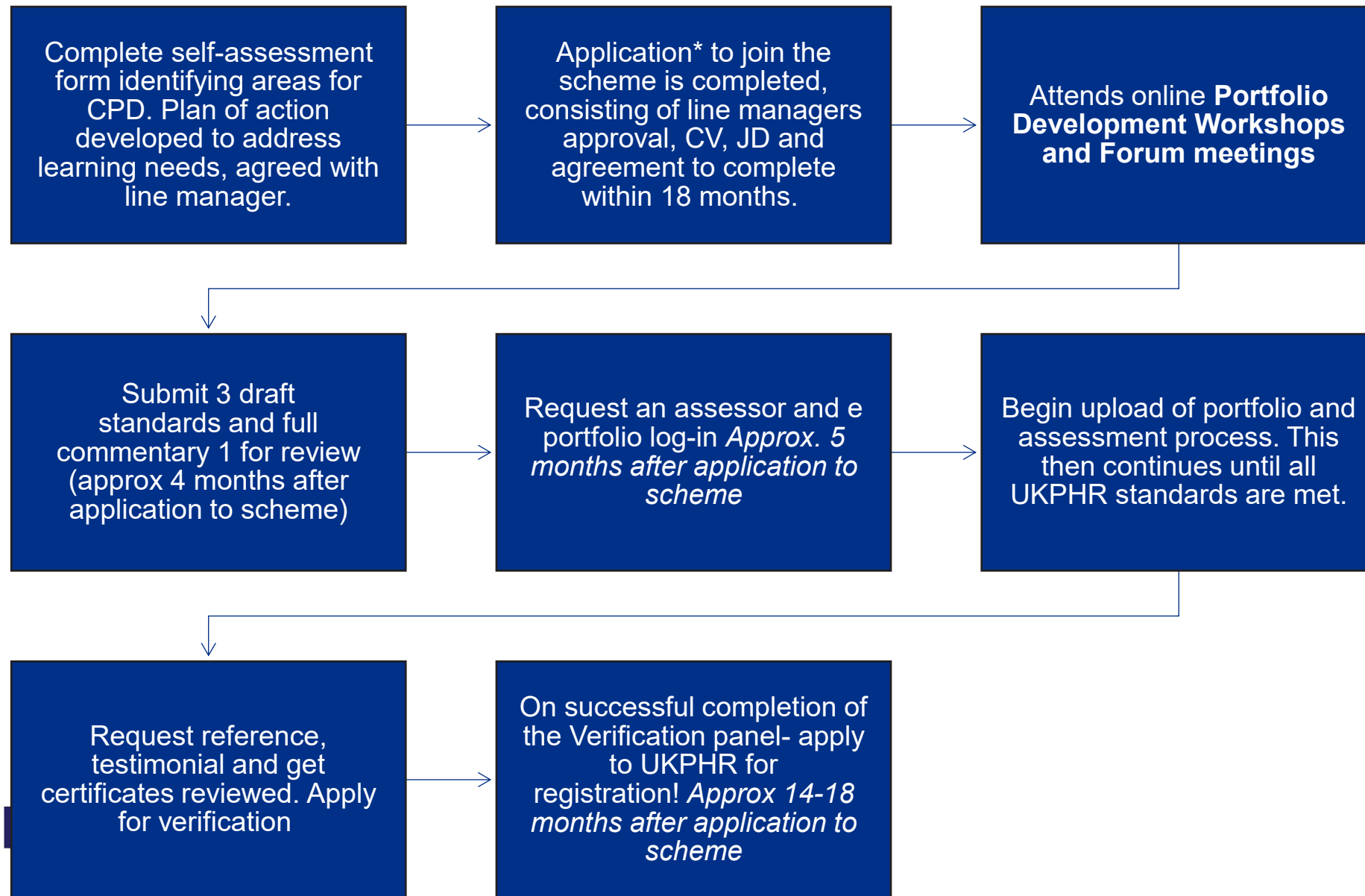
Working alongside people from different disciplines of public health to develop your portfolio is an added benefit of the registration process.

It is not a race to complete – the benefit is in the development and reflection you will undertake on your journey.

Average time: 10-18 months



Mental Health Promotion Specialist Domestic Violence Liaison Nurse Screening & Immunisation Co-ordinator  
Research Officer Senior Health Promotion Specialist Public Health Project Manager Project Manager  
Public Health Lead Head of Information and Intelligence Oral Health Advisor  
Public Health Lead - NHS Health Checks Specialist Health Improvement Practitioner Health Promotion Manager  
Senior Manager Research Fellow Pressure Garment Study Health Inequalities Development Manager  
Library & Knowledge Services Manager Public Health Intelligence PhD Researcher Oral Health Promoter Public Health Development Commissioner  
Public Health Programme Manager Health Improvement officer  
Senior PH Manager Public Health Project Manager Specialist Health Improvement Practitioner Principal Public Health Practitioner  
Health Improvement Research Fellow Health Checks Service Manager Healthy Lives Worker  
Health Promotion Officer Community Health Trainer Coordinator TB Clinical Research Nurse PH Immunisation & Screening Manager  
Health Improvement Specialist Public Health Specialist Registrar Senior Health Improvement Officer  
Health Development Officer Specialist for Children and Young People Head of Service Senior Environmental Health Officer  
Senior Public Health Practitioner Sexual Health Promotion Team Leader Clinical Service Manager  
Senior Health & Wellbeing Advisor Acting Principle Public Health Practitioner Development Manager (Health Protection)  
Oral Health Promotion Practitioner Health Improvement Officer Infant feeding project officer  
Senior Public Health Intelligence Analyst Senior Public Health Manager Senior Health Protection Practitioner  
Public Health Programme Manager Early Years Coordinator Strategic Commissioner for Sexual Health and Well-being  
Physical Activity Assistant Public Health Programme Officer Public Health Commissioning Head of Service Project Manager  
Public Health Programme Officer Health Improvement Lead (Mental Health) Regional Development Manager  
City Regions Project Lead Practitioner Health Protection Nurse  
Benchmarking Project Lead Health Checks Programme Manager Public Health Advisor Public Health Project Manager  
Locality Public Health Partnerships and Commissioning Head Scientific Officer  
Health Improvement Principal Dental Therapist Health Development Officer Team Leader (Drugs & Alcohol)  
Senior Public Health Research Officer Oral Health Improvement Practitioner Childhood Obesity Programme Co-ordinator  
Programme Manager Senior Public Health Practitioner Commissioning Public Health Lead  
Senior Public Health Development Commissioner Stop Smoking Adviser  
District Public Health Development Officer Health Improvement Practitioner Health and Physical Activity Development Manager  
Team Manager Health and Wellbeing Practitioner Oral Health Improvement Co-ordinator Health Improvement Specialist  
Senior Health Promotion Specialist Senior Health Promotion Specialist Nutrition Team Leader  
Regional Tobacco Control Policy Manager Head of Commission Support Health and Social Care  
Public Health Business Analyst Tobacco Control Programme Manager  
Public Health Intelligence Analyst Well-being and Partnership Lead Project Co-ordinator Armed Forces  
Health Improvement Team Lead Trainer Public Health Resource & Campaigns Officer Suicide Prevention Worker  
Environmental Health Officer Health Improvement Manager Road Safety Manager Lecturer Faculty of Health Sciences  
Health Improvement Commissioning and Performance Lead Tobacco Control Strategy Lead Sexual Health Programme Lead  
Health Improvement Co-ordinator Health Improvement Specialist Clinical Effectiveness Specialist  
Mind Your Heart Development Worker Tobacco Control Lead Lead Trainer Health Improvement  
Health Promotion Manager Health Improvement Nutrition Specialist Senior Health Promotion Practitioner  
Specialist Health Improvement Practitioner Health Improvement Senior Business Analyst Healthy Living Coordinator  
Health Promotion Officer Health Improvement Nutrition Specialist Health & Wellbeing Physical Activity Co-ordinator  
Patient & Public Involvement Manager Chlamydia Lead Nurse Independent Public Mental Health Practitioner





# Costs

- NHSE funds the portfolio development scheme support
- Following verification of your portfolio, you will need to apply to UKPHR for registration
- Application form is in Supporting Information document; plus CV, testimonial, reference
- There is an Admin fee + subscription fee £121 per year which you will pay personally
- Registration valid for 5 years
- CPD is the basis of demonstrating fitness to practice.

# Commentaries

- Your portfolio will be made up of **3 (or 4) commentaries**, each of which represents a *discrete piece of work*
- The commentary is the *vehicle* for demonstrating your Knowledge, Understanding and Application for the standards
- You will be required to provide documentary additional evidence of
  - 1) how you acquired the **knowledge** for each standard
  - 2) How you **applied** the standard in practice.

Writing commentaries is an iterative process – expect to work through several drafts, and for it to take time for you to find your way through the requirements

# The UKPHR Standards

34 standards spread between 8 “areas of practice”. You need to evidence ALL of them

1. Practising professionally, ethically and legally
2. Using public health information to influence population health and wellbeing
3. Assessing the evidence for public health interventions and services
- 4 Protecting the public from health risks while addressing differences in risk exposure and outcome
5. Implementing public health policy and strategy
6. Collaborating across organisations and boundaries to deliver the public health function
7. Planning, implementing and evaluating public health programmes and projects
8. Communicating with others to improve health outcomes and reduce health inequalities

# 3 Core Elements

For every one of the 34 standards you must demonstrate all 3 elements

<b>Knowledge</b> <b>(WHAT you know)</b>	Where did you acquire this knowledge? WHAT do you know?	-Discussed in the commentary -Requires a piece of evidence for each standard (usually a certificate and/or learning outcomes)	When you write the narrative for these two section for each standard in your commentary, they will not necessarily relate to your commentary topic- as you are writing about your knowledge and understanding of the overall theory.
<b>Understanding</b> <b>(WHY it's important)</b>	WHY do we practice in this way? WHY is this relevant in your area of work?	-Demonstrated through the commentary (No corroborative evidence required)	
<b>Application</b> <b>(HOW you apply this)</b>	How have you applied your knowledge and demonstrated your skills in practice?	-Discussed in the commentary -Requires a piece of evidence for each standard that clearly shows you doing this skill	This is the part which relates to your commentary as it describes what YOU did to apply the standard in your practice



# Example- one standard

UKPHR Standard 2.5:	Knowledge:	Understanding:	Application:
<i>Interpret and present information using appropriate analytical methods for quantitative data</i>	<p>Explain what you know relating to quantitative data and analysis methodology in the commentary narrative.</p> <p>+</p> <p>Provide a certificate and course outline</p>	<p>Describe the quantitative data you work with. Why is it important to use different types of data and analysis? Write about this in the commentary narrative</p>	<p>Describe an example of when you gathered, analysed and presented quantitative data.</p> <p>+</p> <p>Provide documentary evidence</p>

The highlighted sections are what we need on your self-assessment form. Consider which items of evidence you will use.

# Evidence

- **Half of all of the evidence must be from the past 5 years** (at time of application for Registration)
- The evidence *must* situate you in it (is your name on the document?, is it clear what part you played in the work?)
- **Different types of evidence**
  - Certificates and curriculum for courses attended
  - Reflective notes to show knowledge gained from self- directed learning
  - Written reports from work setting/ emails
  - Testimonials from line manager/others to verify your involvement
- You need at least 1 piece for every standard to demonstrate application and 1 to demonstrate how you acquired the knowledge.
- You can use evidence items more than once

# Y&H Scheme Info

Joanne Deighton

# Practitioner Support

UKPHR, Y&H Practitioner Registration Scheme - Information webinar 2026 – Alix Sheppard	Monday 1 <sup>st</sup> December 2025, 11:00 – 14:00 - online
Y&H UKPHR Induction Workshop – Alix Sheppard	Monday 20 <sup>th</sup> April 2026, 9:30 – 12:30 – online
Y&H UKPHR, Portfolio Skills Workshop 1 (PSW1) - Alix Sheppard	Wednesday 29 <sup>th</sup> April 2026, 09:30 – 14:30 in person – University of Leeds, (venue TBC)
Portfolio Skills, Workshop 2 (PSW2) - Reflective Practice - Dr Susy Stirling & Saima Nazir-Desforjes	Wednesday 24 <sup>th</sup> June 2026, 10:30 – 12:30 - online
Y&H UKPHR, Portfolio Skills , Workshop 3 (PSW3) - Alix Sheppard	Wednesday 1 <sup>st</sup> July 2026, 09:30 – 14:30 in person @ University of Leeds (venue TBC)
Y&H UKPHR, Practitioner Forums (6 in total) PR1 PR2 PR3 PR4 PR5 PR6	All Online Wednesday 15 <sup>th</sup> July 2026, 09:00 – 10:30 Wednesday 9 <sup>th</sup> September 2026, 09:00 – 10:30 Tuesday 10 <sup>th</sup> November 2026, 09:00- 10:30 Tuesday 12 <sup>th</sup> January 2027, 09:00 – 10:30 Wednesday 10 <sup>th</sup> March 2027, 09:00 – 10:30 Tuesday 11 <sup>th</sup> May 2027, 09:00 – 10:30

# Core Public Health Workforce Development Training Programme, Y&H 2026

Development Training Session	Facilitator	Date/Time	Location
1. Introduction to public health: the context and climate of practice	Faculty of Public Health facilitator	Wed, 1 <sup>st</sup> April 2026, 13:30-16:30	Online session
2. Professional skills for public health, ethical practice and communication	Faculty of Public Health facilitator	Mon, 20 <sup>th</sup> April 2026, 13:30-16:30	Online session
3. Introduction to epidemiology: using information for health	Faculty of Public Health facilitator	Mon, 11 <sup>th</sup> May 2026, 13:30-16:30	Online session
4. Evidence based practice to reduce health inequalities	Faculty of Public Health facilitator	Mon, 1 <sup>st</sup> June 2026, 13:30-16:30	Online session
5. Designing, delivering, and evaluating public health interventions	Faculty of Public Health facilitator	Mon, 15 <sup>th</sup> June 2026, 13:30-16:30	Online session
6. Working collaboratively to deliver the public health function in a changing political and economic climate	Faculty of Public Health facilitator	Mon, 29 <sup>th</sup> June 2026, 13:30-16:30	Online session
7. Systems Leadership; how to lead when you're not in charge	Debbie Sorkin	Mon, 13 <sup>th</sup> July 2026, 13:30-16:30	Online session
8: Coaching Skills	Dr Susy Stirling	Mon, 27 <sup>th</sup> July 2026, 13:30-16:30	Online session
9. Personal Wellbeing	Dr Martin Billington & Dr Jaimee Wylam	Mon, 7 <sup>th</sup> September 2026, 13:30-16:30	Online session
10. Tackling inequalities; wider determinants of health	Lucy Wearmouth & Sohaib Akhtar	Mon, 21 <sup>st</sup> September 2026, 13:30-16:30	Online session
11. Critical Appraisal	Sapphire Johnson & Carys Williams	Mon, 5 <sup>th</sup> October 2026, 13:30-16:30.	Online session
12. Health Protection	Health Protection Team	Mon, 19 <sup>th</sup> October 2026, 13:30-15:45	Online session



# Further Support

## Practitioner Mentor

- An experienced public health professional conversant with UKPHR practitioner standards.
- Informally review evidence and draft commentaries providing advice and guidance through a dialogue with the mentee.

Each practitioner has a **practitioner mentor**

## Your Line Manager

- Organisation support
- Afforded time required to attend relevant session of the scheme, minimum of 8 days protected time

# Evaluation Roles

## Assessor

- An public health professional with at least 2 years experience at senior or advanced practitioner level and conversant with UKPHR practitioner standards.
- They impartially assess evidence submitted by practitioners to demonstrate competence against the practitioner standards, providing a decision against standards and formal feedback.

## Verifier

- Is a Registered public health specialist in good standing and have held a consultant or a post of equivalent responsibility.
- They quality assure a practitioner's portfolio at verification panels.

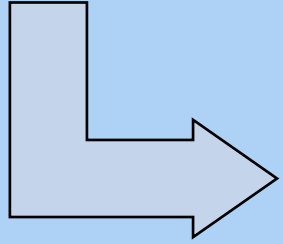
## **Timeframes**

- Commentaries - 3 submission deadline dates.
- Assessment of commentary – approximately 3 weeks.
- Clarifications – submitted within 2 months
- Resubmissions – submitted within 6 months

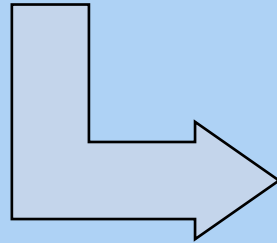


# HOW TO APPLY

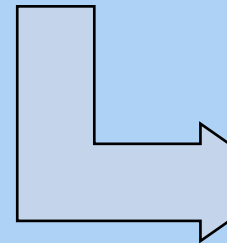
Applications will open for 2025 –  
1<sup>st</sup> December 2025, PM



Application form, self-  
assessment form, CV, Job  
description and Line Manager  
approval to complete



Completed forms to  
[PHPPYH@leeds.ac.uk](mailto:PHPPYH@leeds.ac.uk) –  
closing date 27<sup>th</sup> February  
2026



Short-listing –  
online interviews

# CONTACT DETAILS

## PUBLIC HEALTH PRACTITIONER WORKFORCE DEVELOPMENT TRAINING PROGRAMME

Joanne Deighton, Programme Manager

Anna Cowan, Senior Programme Administrator

Imogen Bowles, Programme Administrator

Lucy Lamb, Programme Administrator

WEBSITE: [Public Health Practitioner Workforce Development Programme](#)

EMAIL: [PHPPYH@leeds.ac.uk](mailto:PHPPYH@leeds.ac.uk)

FOLLOW US ON 'Bluesky': [@phppyh.bsky.social](#)

# Public Health Practitioner

Name Linda Mulunda

Title : Sponsored studies research facilitator

Date of registration 28<sup>th</sup> May 2025

# Mental health Trust- research department





NGO

Non Governmental Organization



# CHALLENGES





**GIVE  
BACK**

# Any Questions?

We will now carry out a task related to the self-assessment process

For the standards below, please consider how you will address them and what evidence items you will use to prove

- 1.3, 2.3, 5.1, 6.2, 7.1, 8.1



UKPHR Standard	Knowledge evidence	Application evidence



# Next steps

Consider which 3 or 4 pieces of work you will use to form the basis of your portfolio- these will become your “commentaries”

Complete the self-assessment form to identify the items of evidence you will use for knowledge and application (application examples must relate to one of the commentary topics)

Highlight any gaps in knowledge or application (experience) and decide whether to apply now, or work on some of the areas identified prior to applying next year

Complete the Application paperwork and submit by **See separate email!**

*Do not underestimate how long this may take as the self-assessment form is an important part of your portfolio progression, you will use this document throughout your portfolio journey.*

# Just like decorating a room

- Preparation is everything!
- The more you do in the planning stage, the easier the process will be
- Take it step by step.. It is an easy process.....*If you follow the steps carefully!!*
- ***Please complete the evaluation here***

<https://app.onlinesurveys.jisc.ac.uk/s/leeds/2026-information-session-ukphr-y-h-practitioner-registration-po>

