



Public Health
England

Tackling TB in Under-Served Populations: A Resource for TB Control Boards and their partners

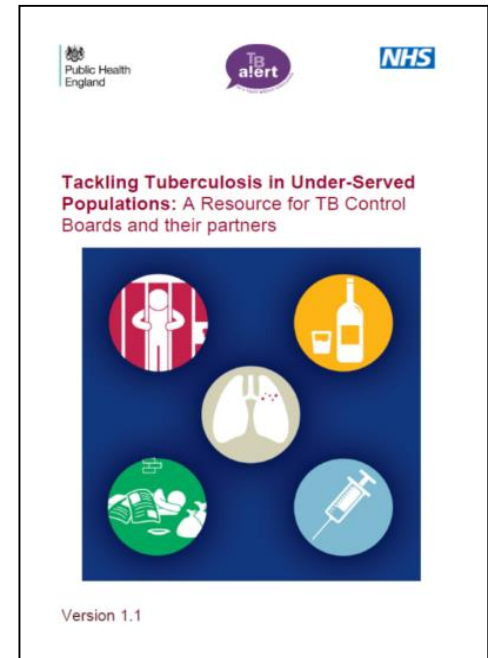
A closer look at **Chapter 3: People in contact with the criminal justice system**

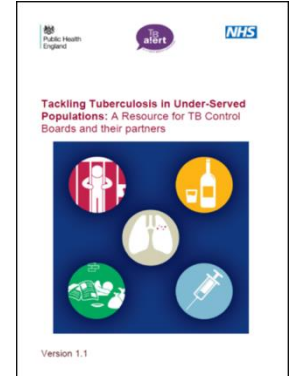
Available from:

<https://www.gov.uk/government/publications/tackling-tuberculosis-in-under-served-populations>

Slides prepared by:

National TB Office – PHE
TBStrategy@phe.gov.uk





Purpose of the USP resource

- to improve our understanding of the health needs of USPs with TB
- to provide a resource to help tackle TB in USPs
- to provide in one place hyperlinked documents, information leaflets, other resources and exemplars of good practise
- to support the design and delivery of multi-agency programmes to better meet the needs of USPs
- Ultimately, to contribute to TB control in the wider population



Who are the under-served with TB?

For the purpose of the USP Resource, people considered as under-served include:

- *people in contact with the criminal justice system*
- some migrants groups - including asylum seekers, refugees and those in immigration detention
- people who are homeless
- people who misuse drugs or alcohol
- people with mental health needs

and what do we know about them... (next slide)

**Under-served
groups are
most at risk
of TB**

**TB cases with a social risk
factor increased**

8.9%
of cases

11.8%
of cases

2011  2015

Social risk groups:



are twice as likely to
have infectious TB



are twice as likely to
die



Who are people in contact with the criminal justice system?



Includes people in:

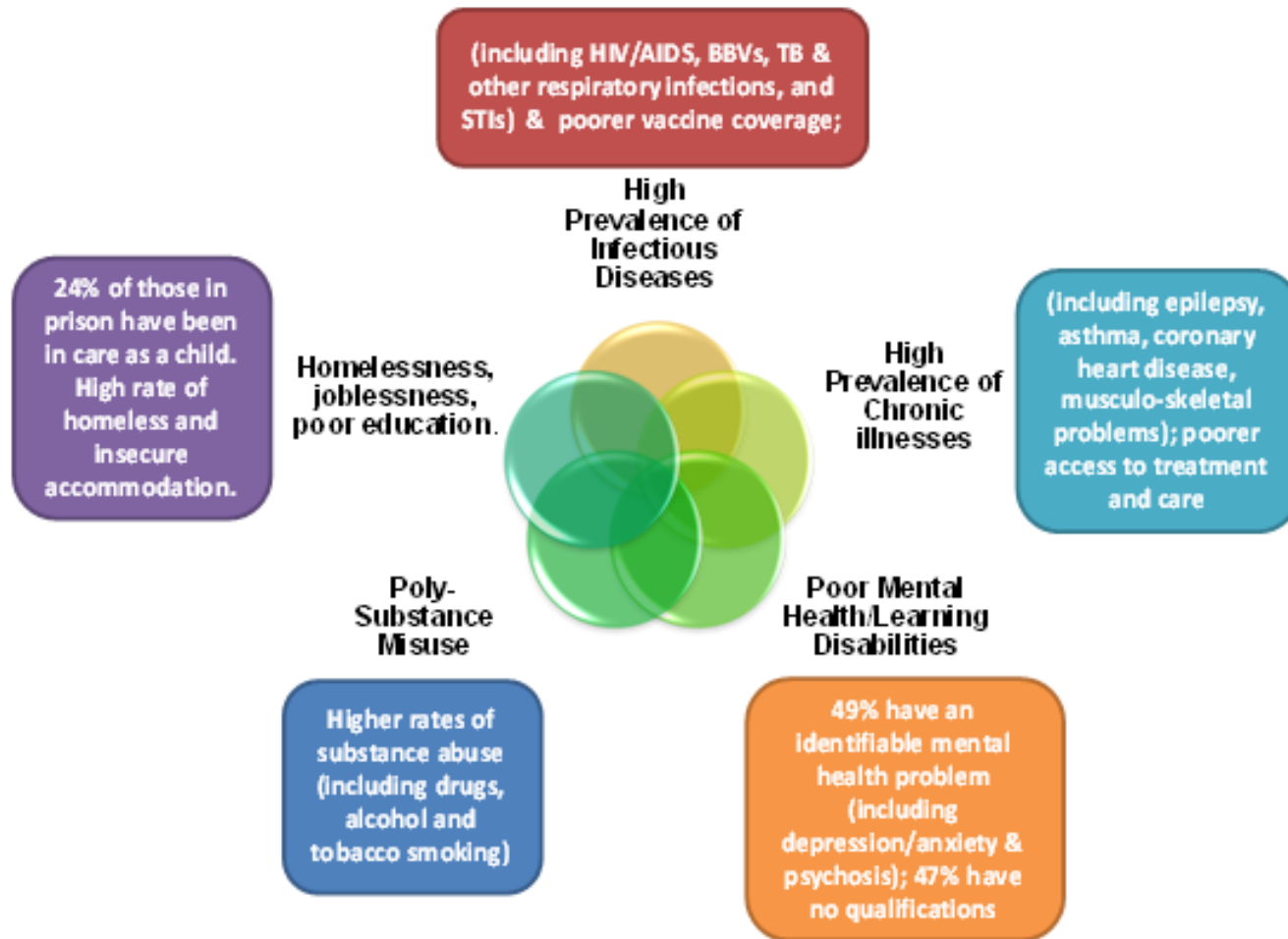
- custodial settings like prisons and Young Offenders Institutions (YOI)
- immigration detention centres
- the community under supervision of probation services
- or just in contact with the police

People in contact with the criminal justice system
Have **COMPLEX NEEDS** (next slide)





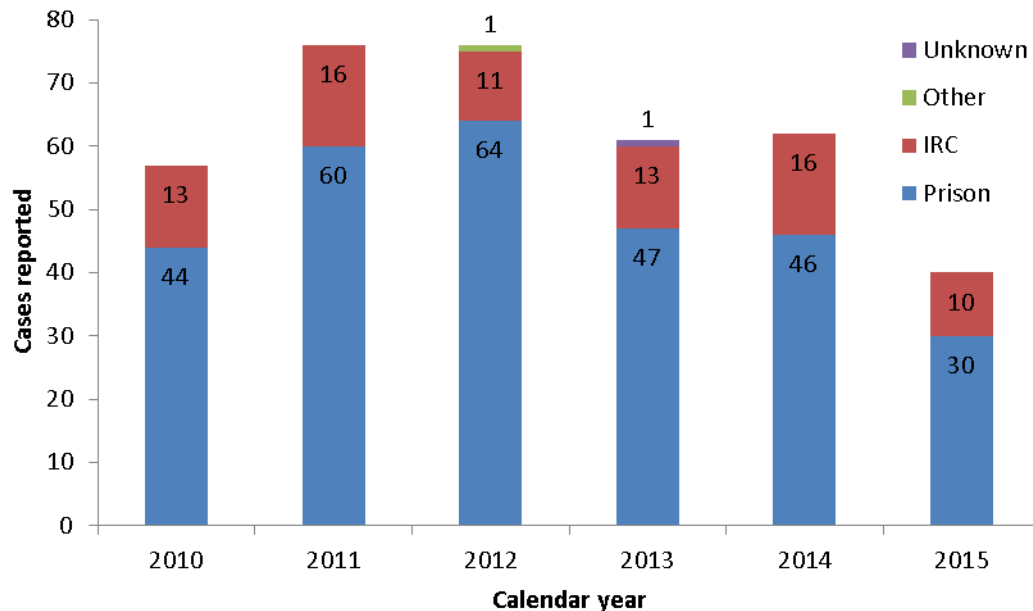
People in contact with the CJS have multiple complex needs





Burden of TB in prisons and other prescribed places of detention (PPDs)

TB cases in PPDs reported to PHE by calendar year (2010-2015)



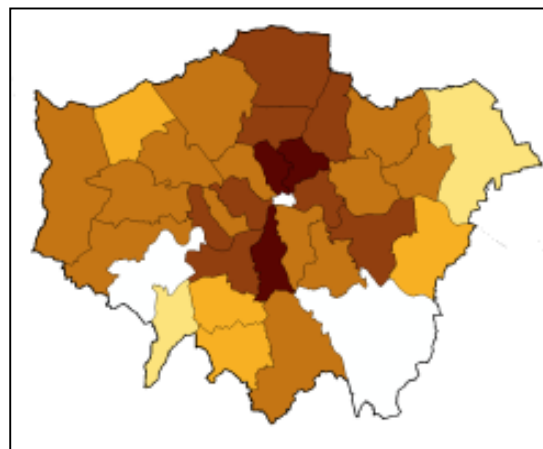
Between 2010 - 2015:

- 3-4% of TB cases had a current or history of imprisonment
- 53% of cases with a history of imprisonment were UK born
- 31% (237/757) of cases with a SRF who experienced a delay in treatment initiation of >4 mths were currently or previously imprisoned
- Diagnostic delay increases the risk of TB transmission to prisoners, prison staff and visitors but also the complexity of contact tracing exercises

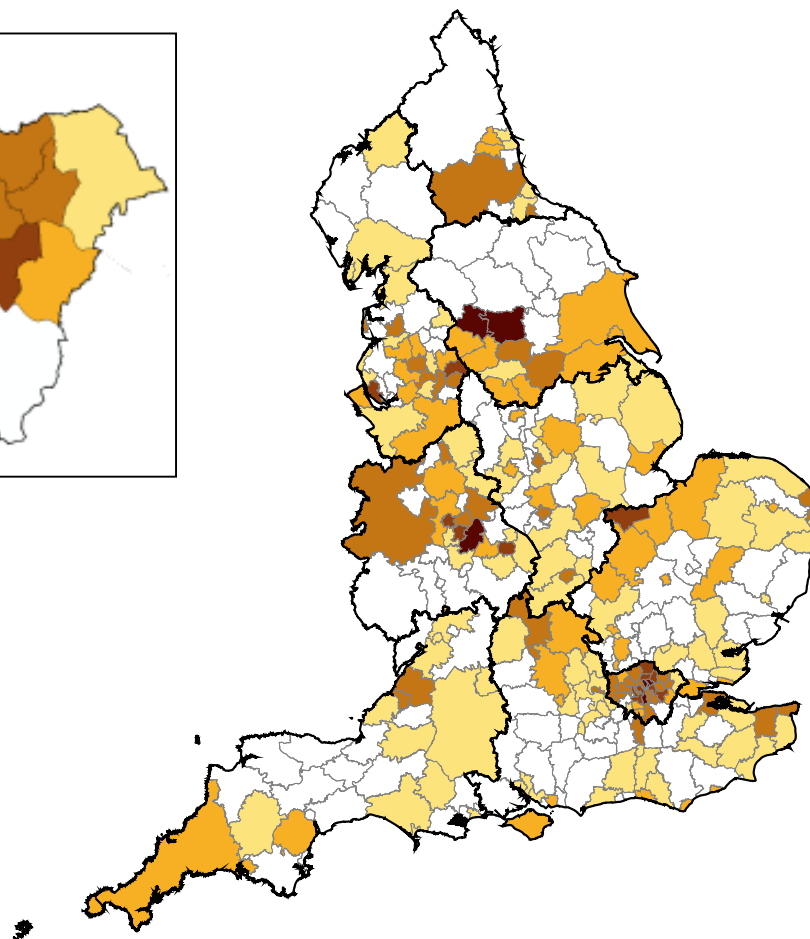


Where are TB patients in contact with the criminal justice system found?

No. of TB cases with current or history of imprisonment by local authority, 2010-2015



Number of cases





Some of the challenges faced when working with people in contact with the CJS

- a lack of a systematic approach to understanding the health needs of this population in both custodial and community settings
- implementation of NICE TB guidance
- developing and delivering supportive care pathways taking account of movement within the detention estate and from custody to the community
- homelessness, unemployment, indebtedness and no recourse to public funds
- multiple health needs



ACTIONS to support people in contact with the criminal justice system - 1

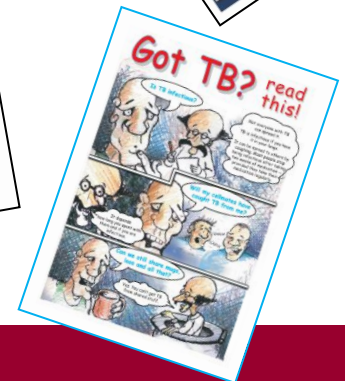
1. Raise TB awareness using:

■ Public Health England

- 'Tuberculosis (TB): information for discipline and wing staff' (PHE website)
- PHE: information about TB for people in prisons (NHS Choices website)
- Got TB? Read this! (NHS Choices website)

■ National Knowledge Service leaflets

Prison health: health and justice annual report





ACTIONS to support people in contact with the criminal justice system - 2

2. Encourage early detection of TB

- TBCBs, local authorities and PHE Health and Justice Lead to encourage the prison estate to prioritise and embed approaches that will lead to early detection and treatment of infectious TB

Exemplar E 3.2

Pathfinder project to test and treat for latent TB infection in IRCs



- Local NHS TB teams to run training sessions to raise awareness of TB in prison staff and prisoners to improve early diagnosis in prisons



Digital X-ray machines in English prisons

6/8 of the DXR machines are currently in use but none of them are NICE compliant



- Currently, six of the eight DXR machines are in use
- None of the prisons with DXR machines are/were NICE guidance compliant i.e. have implemented universal screening

Prison	Currently in use?	NICE guidance compliant?
Belmarsh	✓	✗
Brixton	✓	✗
Pentonville	✗	✗
Wandsworth	✓	✗
Wormwood Scrubs	✗	✗
Holme House	✓	✗
Manchester	✓	✗
Birmingham	✓	✗

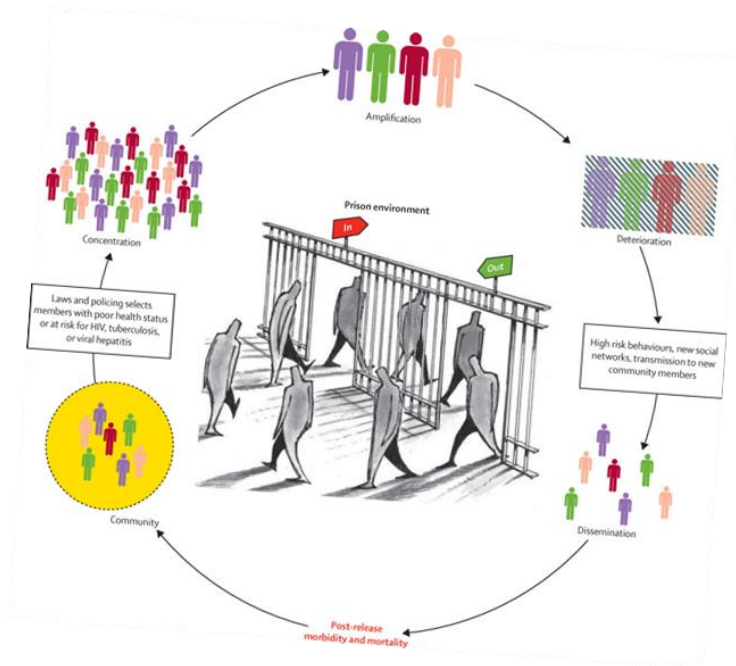
Please note that since the publication of the USPs, the X-ray machines in both Belmarsh and Wandsworth prisons are now in use.



ACTIONS to support people in contact with the criminal justice system - 3

3. Develop supported care pathways to help treatment completion

TBCBs working with other stakeholders could develop a time limited task and finish group to develop supported care pathways across the CJS, including seamless DOT provision from prison to community



Exemplar 3.1: National Partnership Agreements between PHE, NHSE and each of NOMS, Home Office, Immigration Enforcement and Youth Justice Board



ACTIONS to support people in contact with the criminal justice system - 4

4. Consider using holistic mobile X-ray unit to visit prisons during outbreak situations



Exemplar E3.3

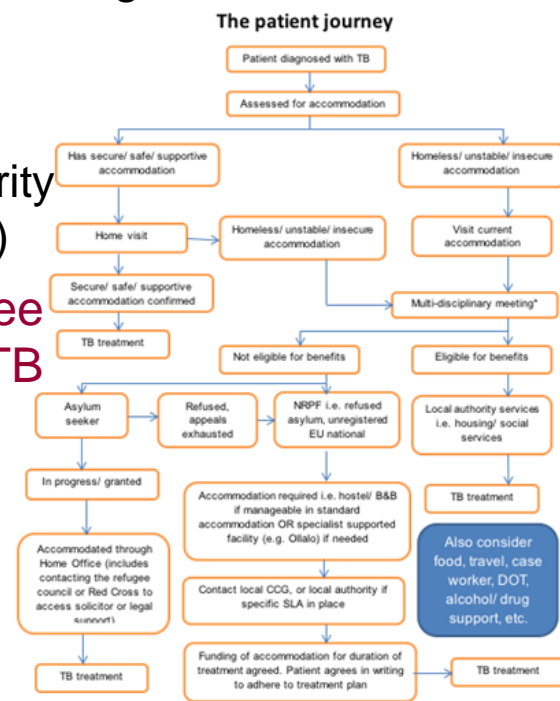
Use of the Find and Treat Mobile X-ray Unit in a prison TB outbreak in the West Midlands



5. Work to address the issues of homelessness & TB – which may apply to those on TB treatment when released from the CJS

The USP Resource provides many recommendations including:

- Streamlined accommodation pathways
 - to help house homeless TB patients
 - to help house TB patients ineligible for local authority funded accommodation (those with NRPFs) (Ch.6)
- TBCBs working with CCGs and local authorities to agree the best way to fund temporary housing for homeless TB patients, until treatment is completed (Ch.6)





OVERALL: USP Resource consists of 10 chapters

Chapter 1: defines who USPs are, outlines the burden of TB in these groups and maps where found in England

Chapters 2 to 6:

- take each USP in turn: defines them; outlines the burden of TB within these groups; discusses their challenges and makes recommendations on how to meet USP needs
- **each chapter includes hyperlinked resources (leaflets & websites) and exemplars of innovation & good practice to stimulate local action**

Chapters 7, 8 and 9: outline roles and responsibilities of local government, TBCBs, CCGs and the third sector in meeting the needs of USPs

Chapter 10 outlines 'models of care' that can be used to meet the needs of USPs with TB

PLEASE do view and use the other chapters



Message from the National TB team

We hope this brief presentation raises awareness of the content of the USP Resource and helps you and your stakeholders develop services that better meet the needs of **People in contact with the criminal justice system**

We encourage you to read the full USP Resource discuss it, work with it & share it as widely as possible

<https://www.gov.uk/government/publications/tackling-tuberculosis-in-under-served-populations>

Thank you