



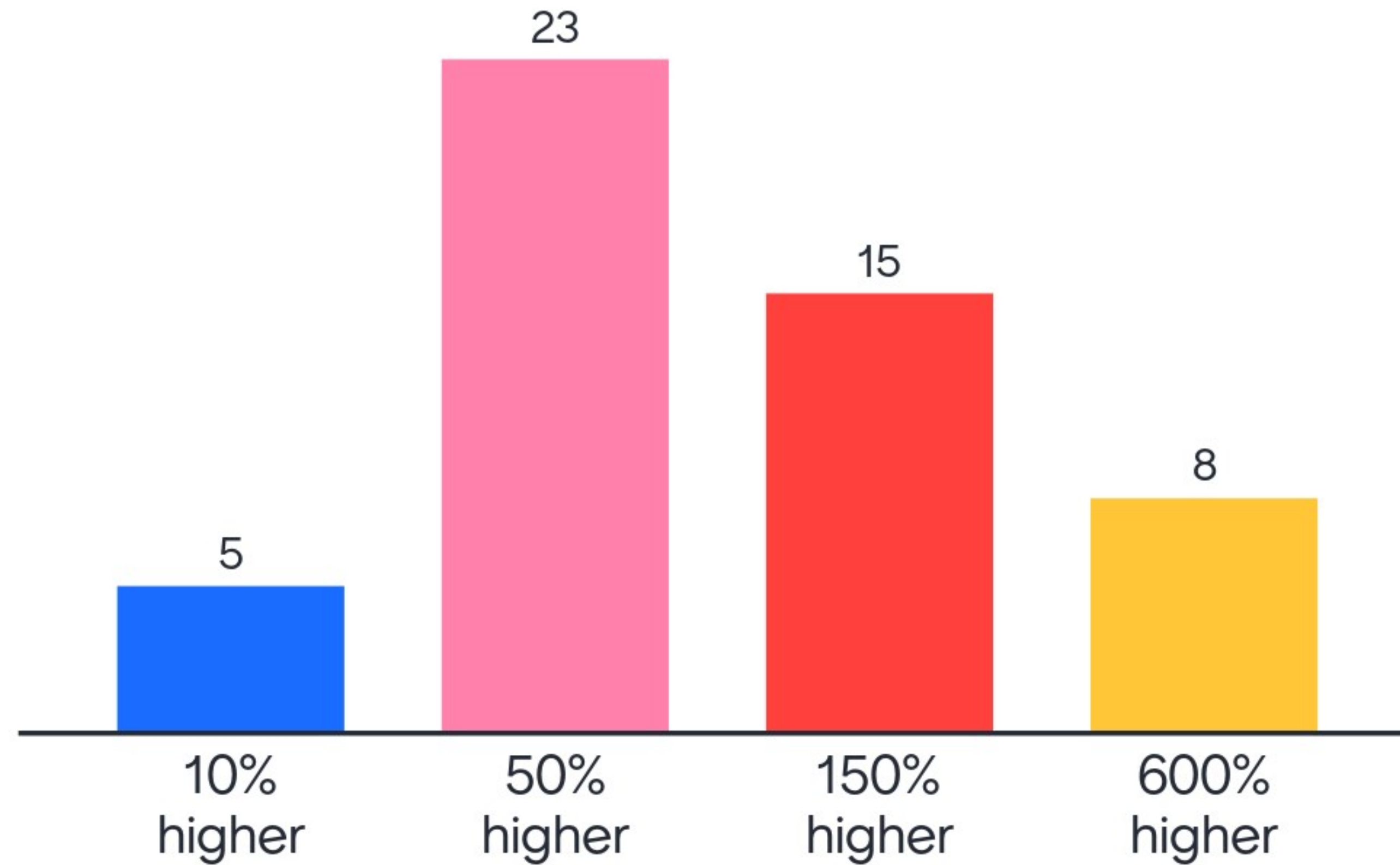
# The impact of COVID19 on people with learning disabilities

Dr Andrew Lee

PHE

Feb 2021

Compared to the general population, how much higher is the COVID19 death rate in people with learning disabilities?



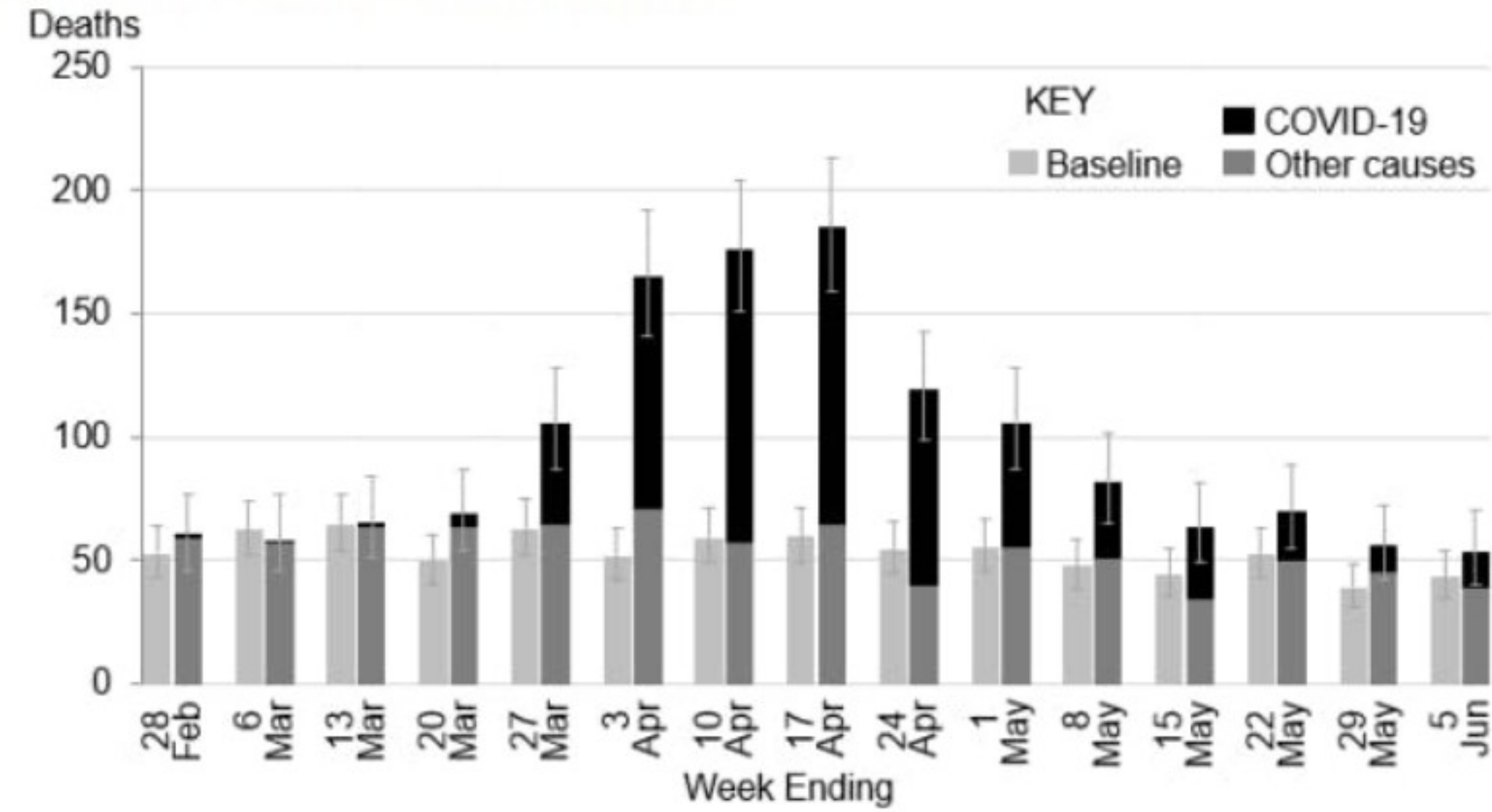


# Deaths from COVID in PwLD: Feb – 5 June 2020

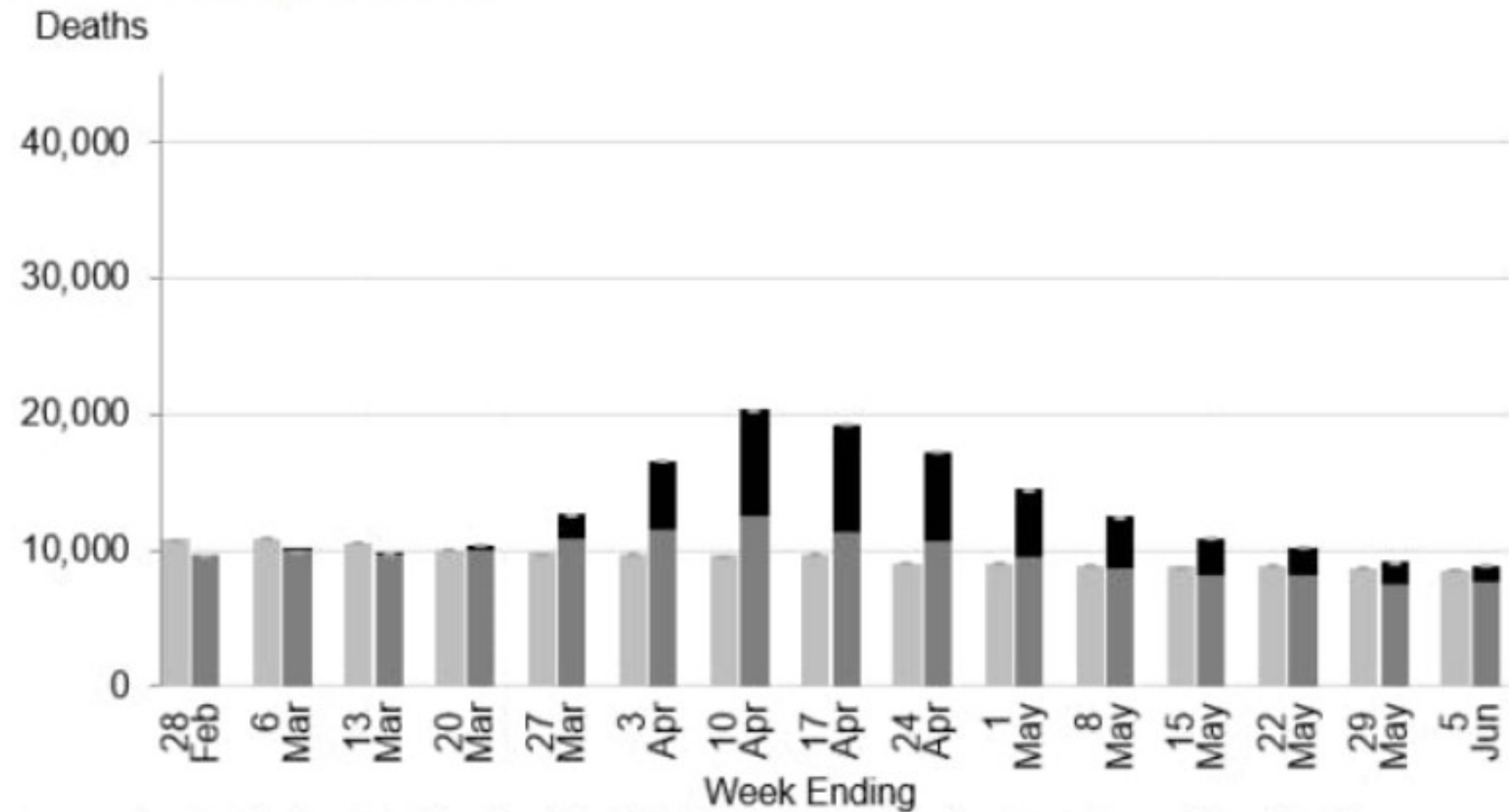
	<u>LeDeR</u>		CPNS	
	Unadjusted	Age/sex adjusted	Unadjusted	Estimated
No. of deaths in adults with LD	623		490	651
Death rate per 100,000 adults with LD	240	692	192	254
Compared to the general population	<b>2.3 x</b>	<b>6.3 x</b>	<b>3.1 x</b>	<b>4 x</b>

Source: PHE. *Deaths of people identified as having learning disabilities with COVID19 in England in the spring of 2020.* November 2020.

### 3.1a People with learning disabilities



### 3.1b General population

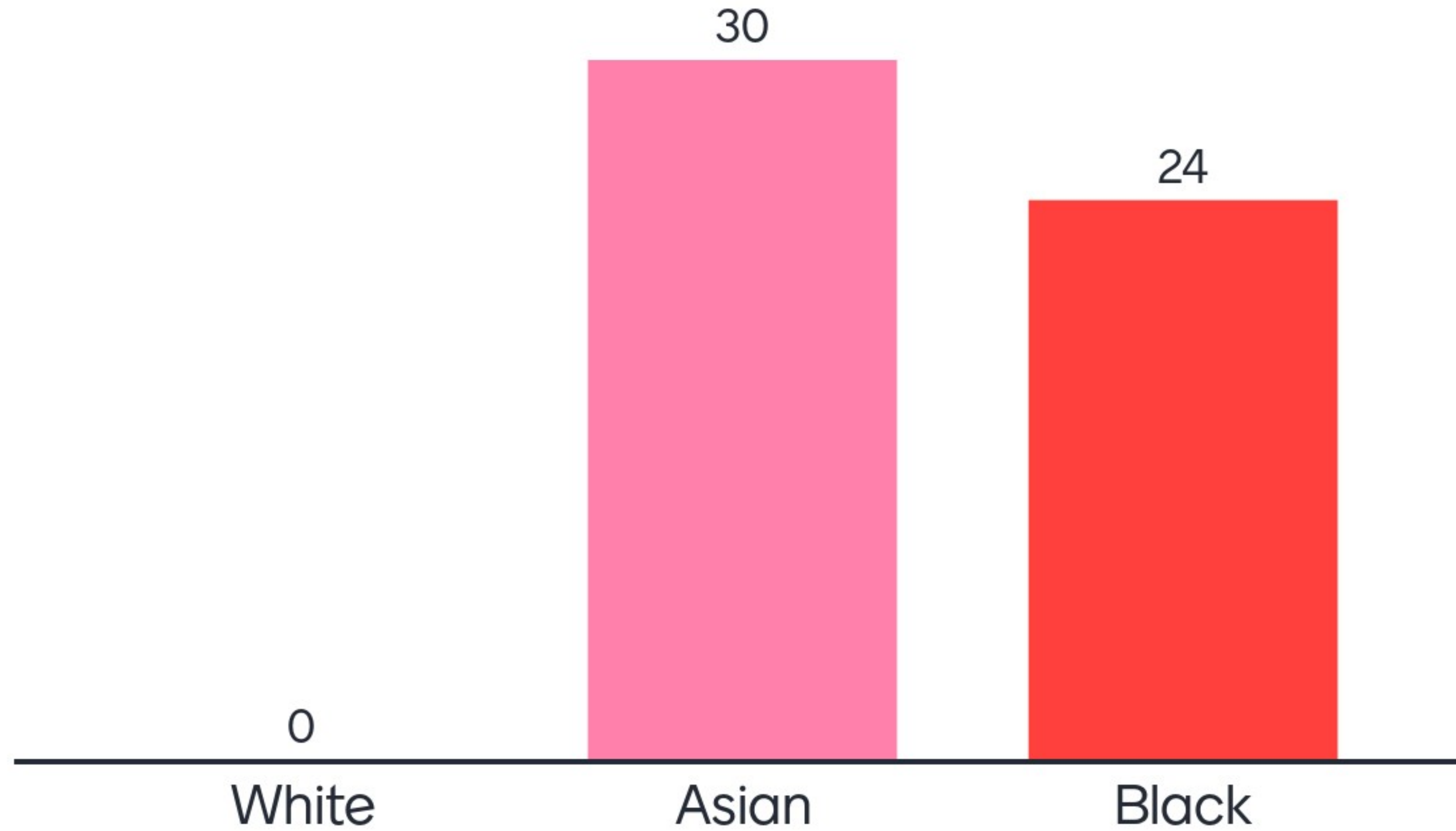


Sources: LeDeR death notifications (unadjusted) (1), ONS death records 2018, ONS provisional death records 2019 and 2020. Confidence intervals are for total numbers of deaths.

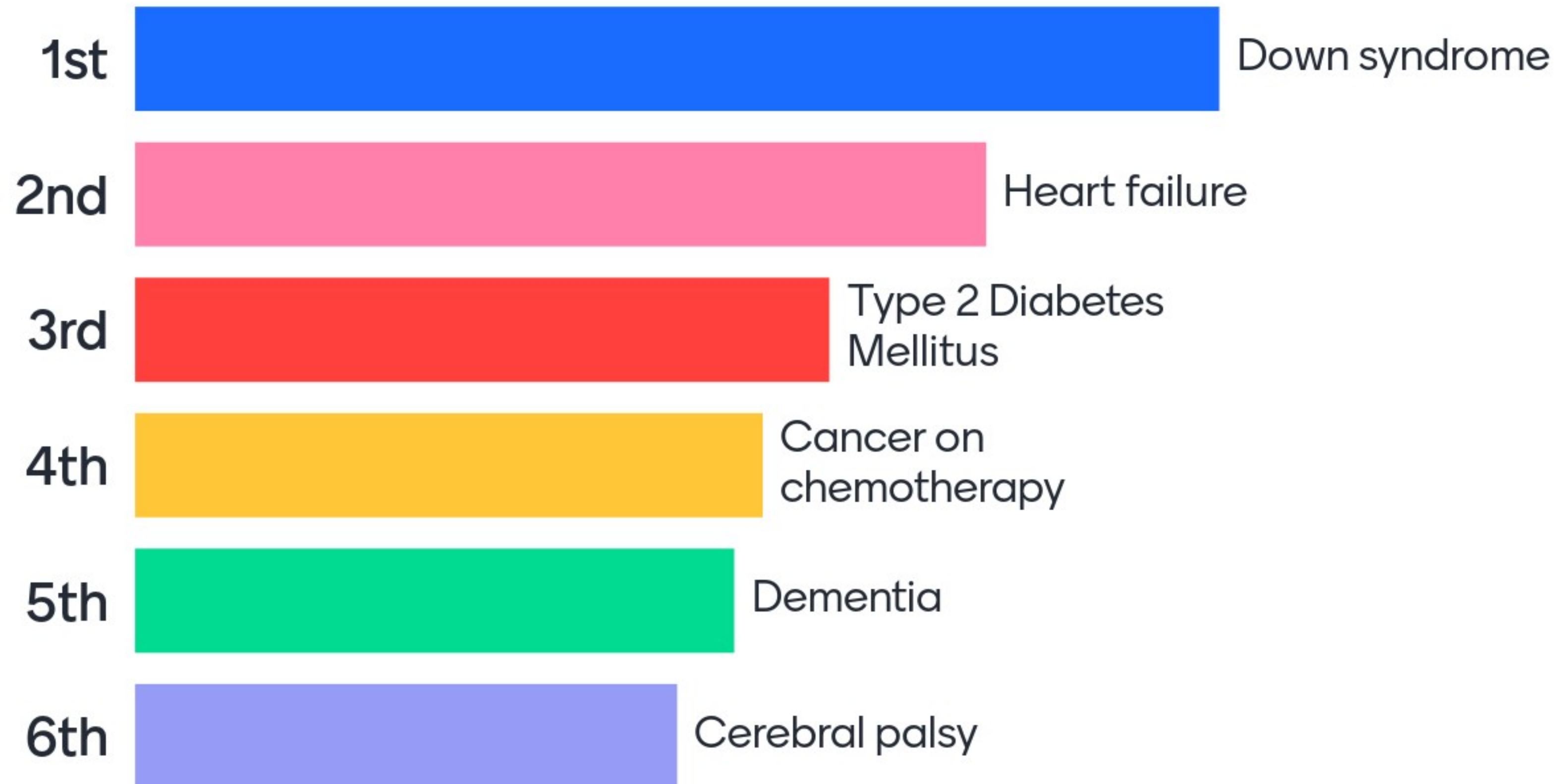




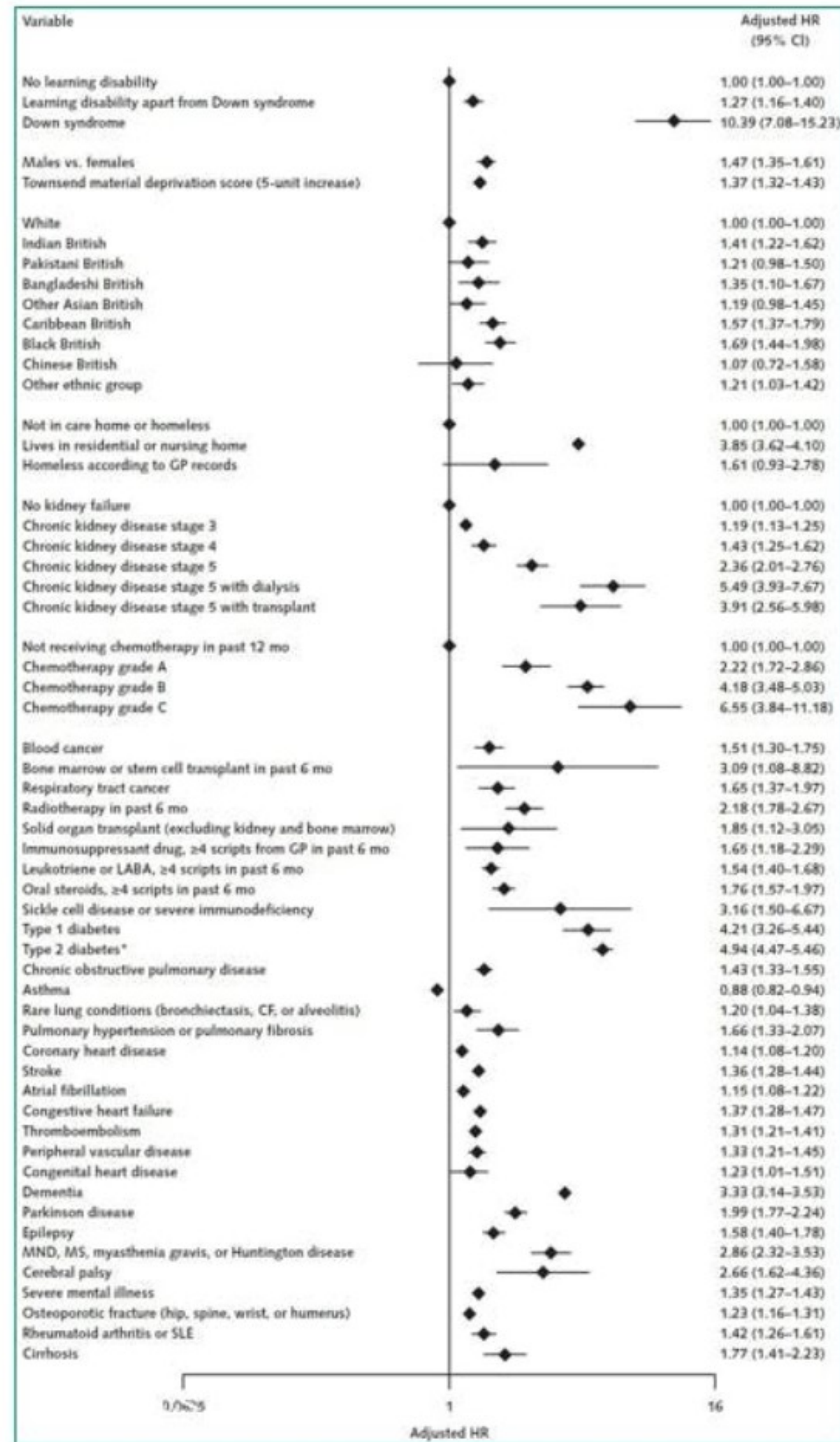
For adults with learning disabilities, which ethnic group has the highest risk of COVID19 death?



# Which condition is associated with the highest risk of death if the person has COVID19??







**Down Syndrome 10.39**

Care home resident 3.85

Chemotherapy C 6.55

Type 2 Diabetes 4.94

Heart failure 1.37

Dementia 3.33

Cerebral palsy 2.66











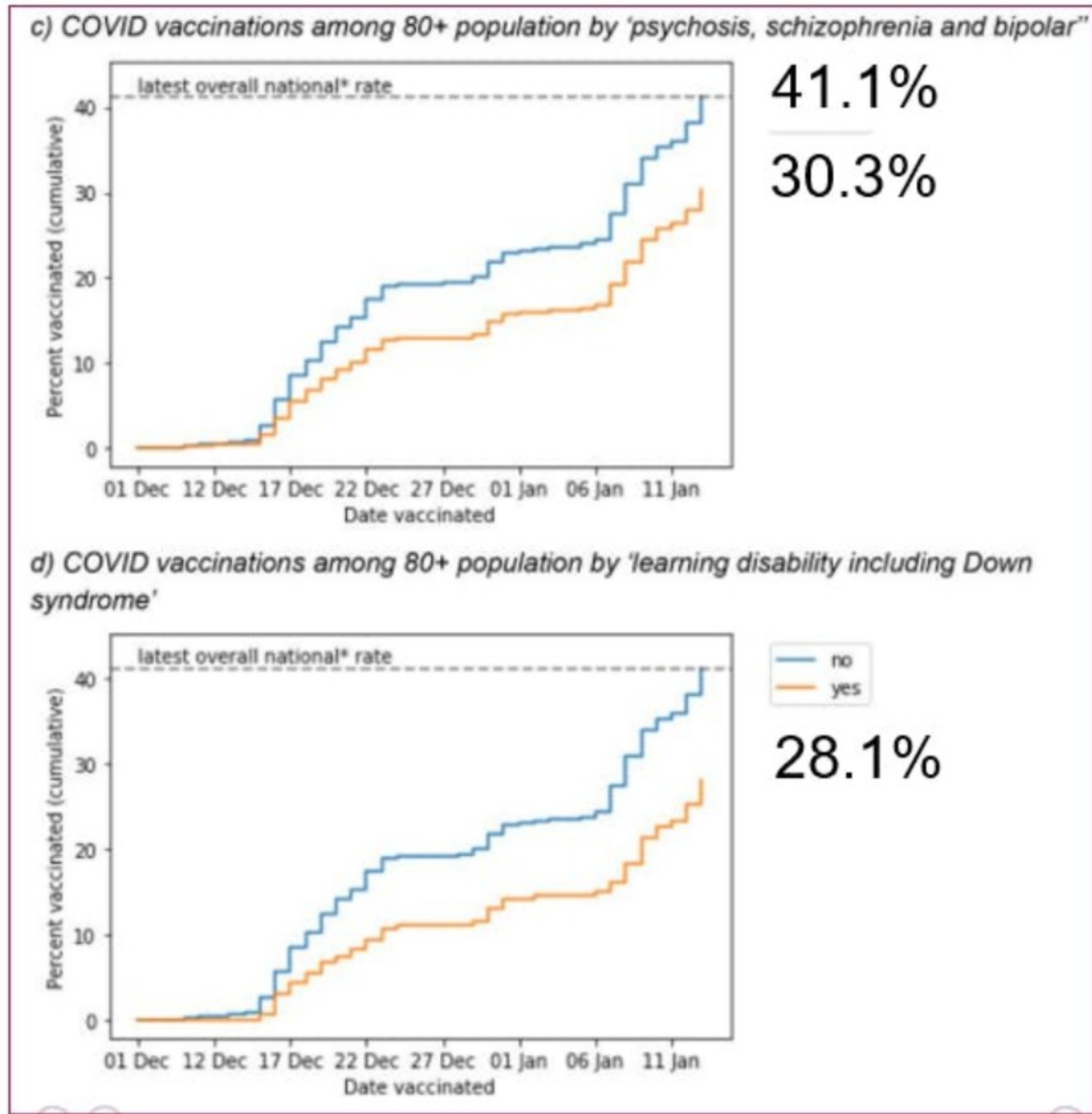


Public Health  
England

# COVID-19 Vaccination coverage of PwLD:

8 Dec 2020 – 13 January  
2021

Source: The [OpenSAFELY Collaborative](#). Trends, regional variation, and clinical characteristics of COVID-19 vaccine recipients: a retrospective cohort study in 23.4 million patients using Open SAFELY. [medRxiv](#). January 2021.







**Down's Syndrome  
Association**

A Registered Charity No. 1061474



# Updated Priority list

1. residents in a care home for older adults and their carers
2. all those 80 years of age and over and frontline health and social care workers (this is where staff paid to support someone with Down's syndrome sit)
3. all those 75 years of age and over
4. all those 70 years of age and over and clinically extremely vulnerable individuals (this is where adults who have Down's syndrome sit)
5. all those 65 years of age and over
6. all individuals aged 16 years to 64 years with underlying health conditions which put them at higher risk of serious disease and mortality (this is where young people aged 16-18 who have Down's syndrome sit and unpaid family carers)
7. all those 60 years of age and over
8. all those 55 years of age and over
9. all those 50 years of age and over







Public Health  
England

# What are we going to do about it?

## What happens when you are given a vaccine?



Normally you are given a vaccine by injection.

1



A trained person will do this.

2



12 weeks



You will need to go back twelve weeks later for a second injection.



Your arm may get sore for a little while.

“  
*COVID-19 poured gas on the long-burning issues people with disability face in accessing health care. When the worst of the fire is out these inequities won't have disappeared.*

”

Kavanagh et al. Improving health care for disabled people in COVID-19 and beyond: Lessons from Australia and England. *Disability & Health Journal* (2020).

