

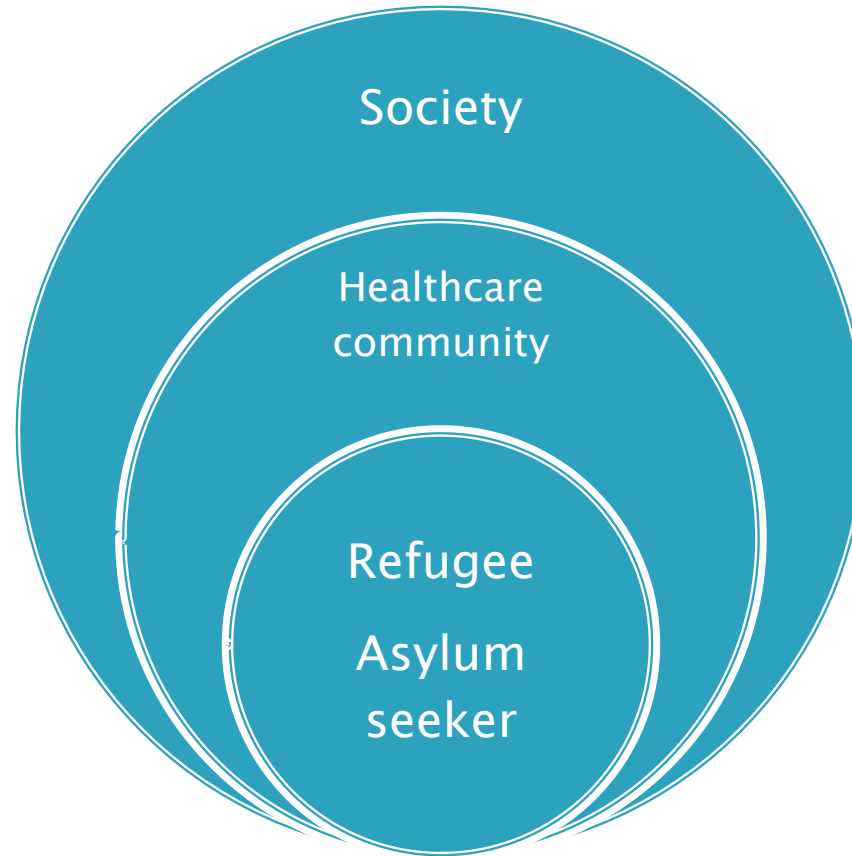
Primary Care for Refugees and Asylum Seekers

How do we get it right?

Dr Suesanne Samara



Why

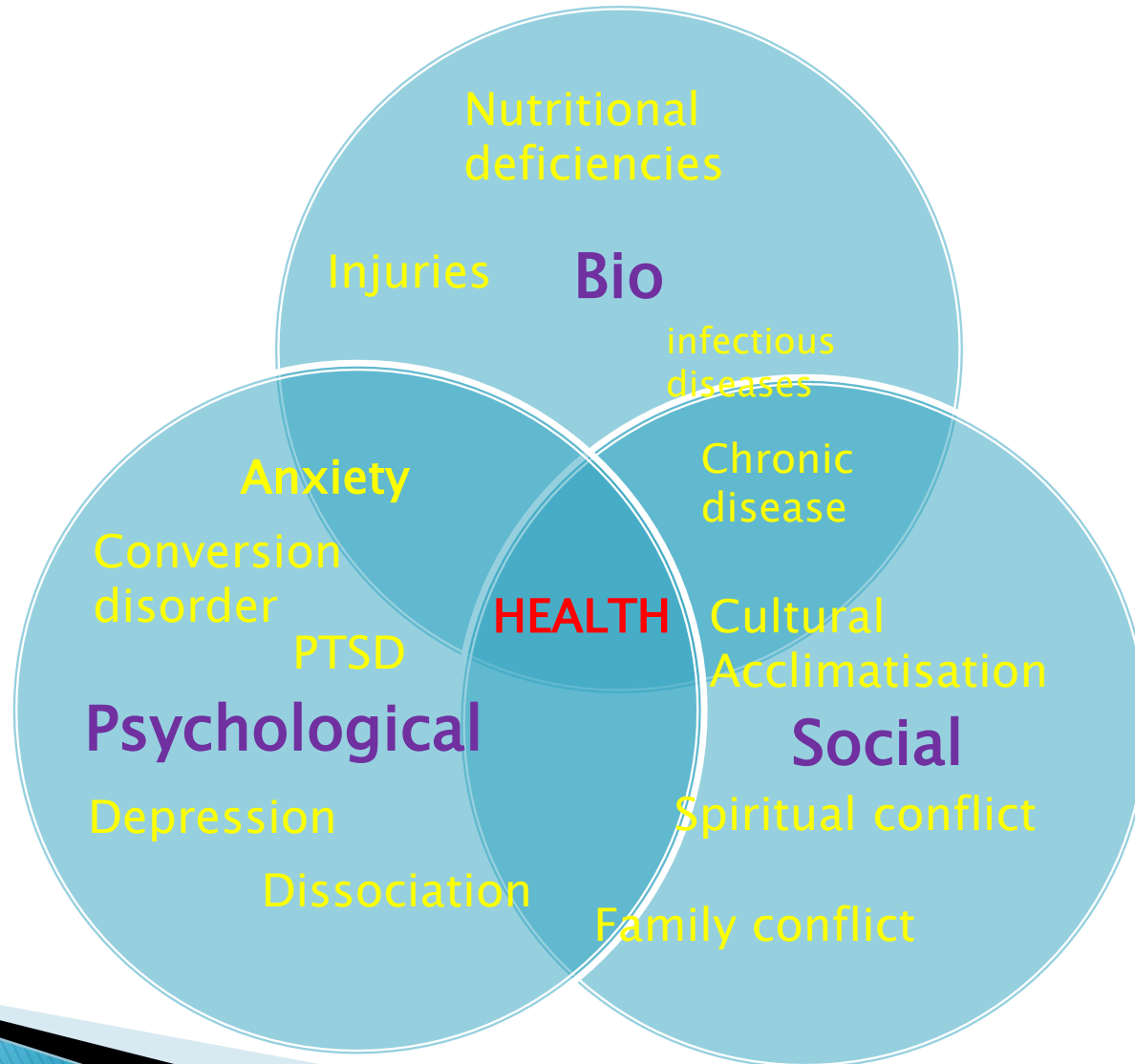


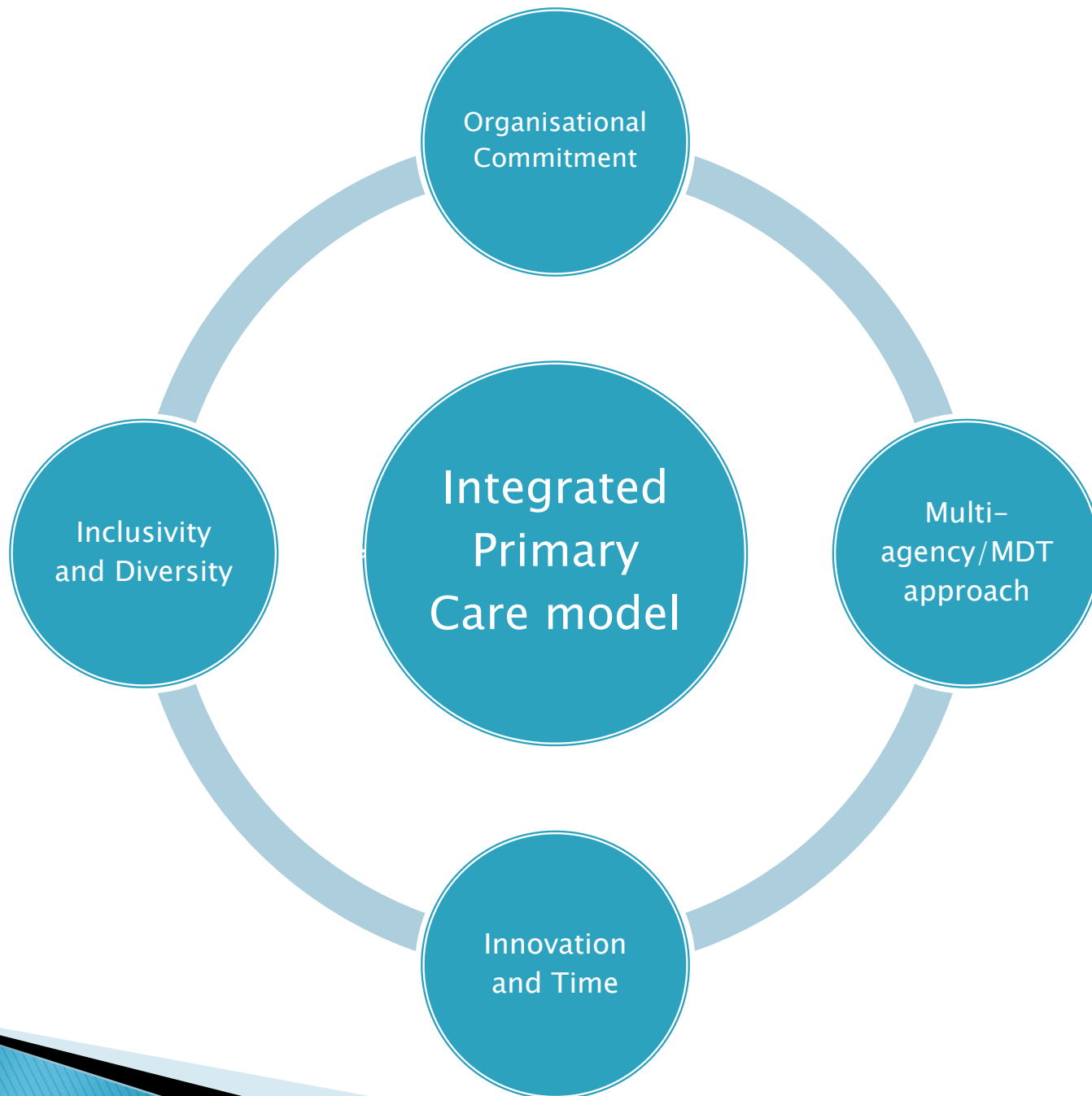
Who



- Survivors not victims
- Diverse not a single identity
- Commonality

Biopsychosocial Model of Health







SAFE SURGERIES TOOLKIT

7 STEPS TO HELP MAKE YOUR
GP PRACTICE SAFE FOR EVERYONE



THIS RESOURCE IS ENDORSED BY



Royal College of
General Practitioners



Royal College
of Nursing

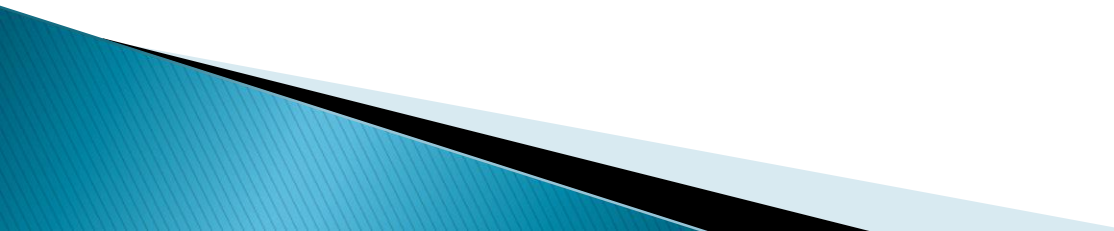


WHAT CAN WE DO TO HELP?

General practices can take concrete steps, both at reception and in consultations, to improve equity of access to their services.

- 1** Don't insist on proof of address documents
- 2** Don't insist on proof of identification
- 3** Never ask to see a visa or proof of immigration status
- 4** Do what you can to protect patient information
- 5** Use an interpreter, if needed
- 6** Display posters to reassure patients that your surgery is a safe space
- 7** Empower frontline staff with training and an inclusive registration policy

Take home messages....

- ▶ Personal and organisational narrative/ values
 - ▶ Know your service user and needs
 - ▶ Strong multi-agency partnerships/pathways
 - ▶ Safe surgeries with reduced/no barriers
 - ▶ Advocacy and CARE
 - ▶ Step by Step
- 

Finally

Suesanne.samara1@nhs.net

'Be the change
you want to see in
the world'

Mahatma Gandhi



Sports Relief @ AWMA

Due to the generosity of people and the large funds generated from our 'Christmas Big Brunch' event, we are now planning Phase Two of our project, aimed at asylum seekers and refugees who are based in Leeds.

Phase Two Project:

We are offering interested individuals 8 weekly 1-to-1 tennis coaching sessions with a registered tennis coach based at Adel War Memorial Association.

We are looking to provide high quality coaching sessions for a multitude of different sporting activities starting with tennis. This programme will commence as soon as the current COVID guidelines allow us to, so please register your interest in advance.

We have multiple places available and we are keen to work with organisations like yours. Please contact us for more information, register your interest or put forward individuals for this programme:

Suesanne Samara
suesanne.samara@gmail.com

Rula Samara
rulasamara@hotmail.co.uk

Eligibility Criteria: Must be aged 16 years or over. Must comply with local COVID guidance. Must be able to arrange own transport to and from AWMA. Must attend alone as per COVID guidance